

R-87617

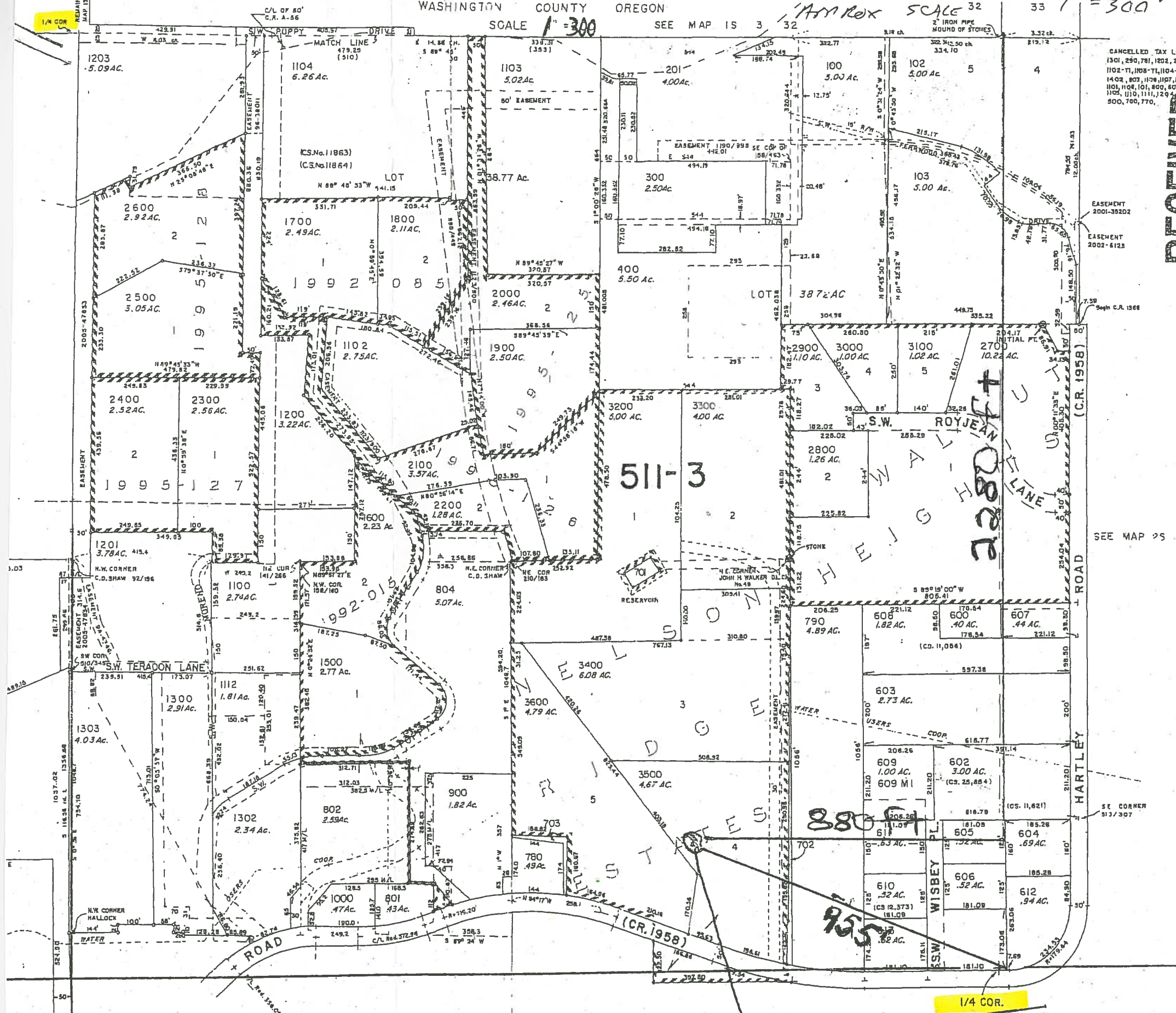
NE 1/4 SECTION 5 T2S R3W W.M.

REVISED ADJUSTED
"AS SHOWN" SCALE 32 33 1" = 300'

WASHINGTON COUNTY OREGON

SCALE 1" = 300'

SEE MAP IS 3 32



CANCELLED TAX LOTS
 1301, 290, 781, 1202, 200,
 1102-11, 1108-11, 1104-11
 1402, 803, 1128, 1107, 1108,
 1101, 1104, 101, 800, 601, 601,
 1105, 1110, 1111, 1200,
 500, 700, 770.

RECEIVED

SEE MAP 25 3

1/4 COR.