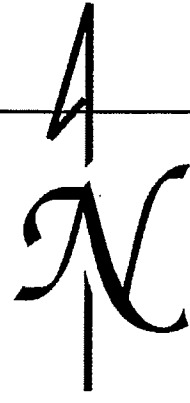


SEC.5 T7S R5W WM
POLK COUNTY

Scale 1" = 400'



32 33
5 4

See Map 6.5.32

See Map 6.5.32

21-7

207
PARCEL 1
80.24 AC

100
PT PARCEL 1
59.86 AC

LOT 1
19.69 AC.

PT. LOT 19.69 AC.

206
PARCEL 2
4.51 AC

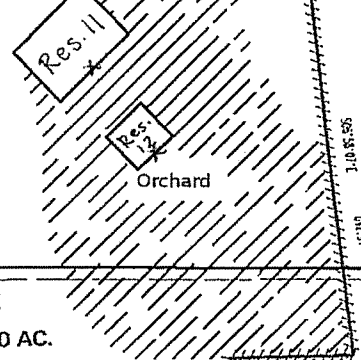
201
PT PARCEL 3

LOT 2
19.00 AC.

204
80.05 AC.
Parcel 2

2-3

Res. 1
Res. 2



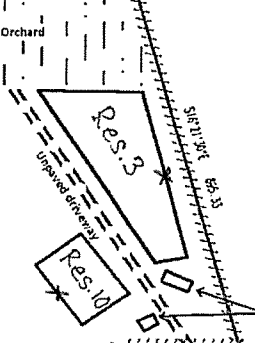
208
.27 AC

900
43.15 AC

202
56.00 AC.

Res. 3
Res. 4
Res. 5
Res. 6
Res. 7
Res. 8
Res. 9
Res. 10

LOT 3
27.07 AC.



LOT 4
49.04 AC.

200
98.95 AC

NE CORNER
OF BOR2-893

N.N.E. CORNER
DLC NO. 39

INT. CORNER
DLC NO. 39

800
PARCEL 1
40.76 AC

E.N.E. CORNER
ANDREW A. WH
DLC NO. 39

RECEIVED

APR 30 2014

WATER RESOURCES DEPT
SALEM, OREGON

1998-0020

PT 2000-0011

PARCEL 2000-0005

2007-0059

See Map 7.5.8

ROAD NO. 6513

6513

S. 1/4 Cor.

E. 1/4 Cor.

Res. #	Reservoir Name	Dam Location – distances all measured from the SE Corner of Section 5, Twp. 7S, Rng. 5w	Maximum Dam Height	Dam Composition	Stream Name	Tributary to
1	Exeter	3000' North and 1530' West	12	Earthfill	Seasonal Stream #4	Salt Creek
2	Moya	2710' North and 1700' West	12	Earthfill	Seasonal Stream #4	Salt Creek
3	Pegasus	2000' North and 590' West	14	Earthfill	Diffuse runoff and water pumped from Reservoirs 1,2,4-8.	Salt Creek
4	Serenity	2010' North and 1220' West	12	Earthfill	Seasonal Stream #1	Salt Creek
5	Talyn	2010' North and 1310' West	12	Earthfill	Seasonal Stream #1	Salt Creek
6	Aurora	1590' North and 1180' West	12	Earthfill	Seasonal Stream #2	Salt Creek
7	Blackbird	1520' North and 1250' West	12	Earthfill	Seasonal Stream #2	Salt Creek
8	Bebop	1050' North and 1210' West	12	Earthfill	Seasonal Stream #3	Salt Creek
9	Firefly	1770' North and 1270' West	12	Earthfill	Diffuse runoff and water pumped from Reservoirs 1,2,4-8.	Salt Creek
10	Enterprize	1660' North and 750' West	12	Earthfill	Diffuse runoff and water pumped from Reservoirs 1,2,4-8.	Salt Creek
11	Discovery 1	3080' North and 960' West	12	Earthfill	Diffuse runoff and water pumped from Reservoirs 1,2,4-8.	Salt Creek
12	Tardis	2905' North and 830' West	12	Earthfill	Diffuse runoff and water pumped from Reservoirs 1,2,4-8.	Salt Creek

RECEIVED

APR 30 2014

WATER RESOURCES DEPT
SALEM, OREGON