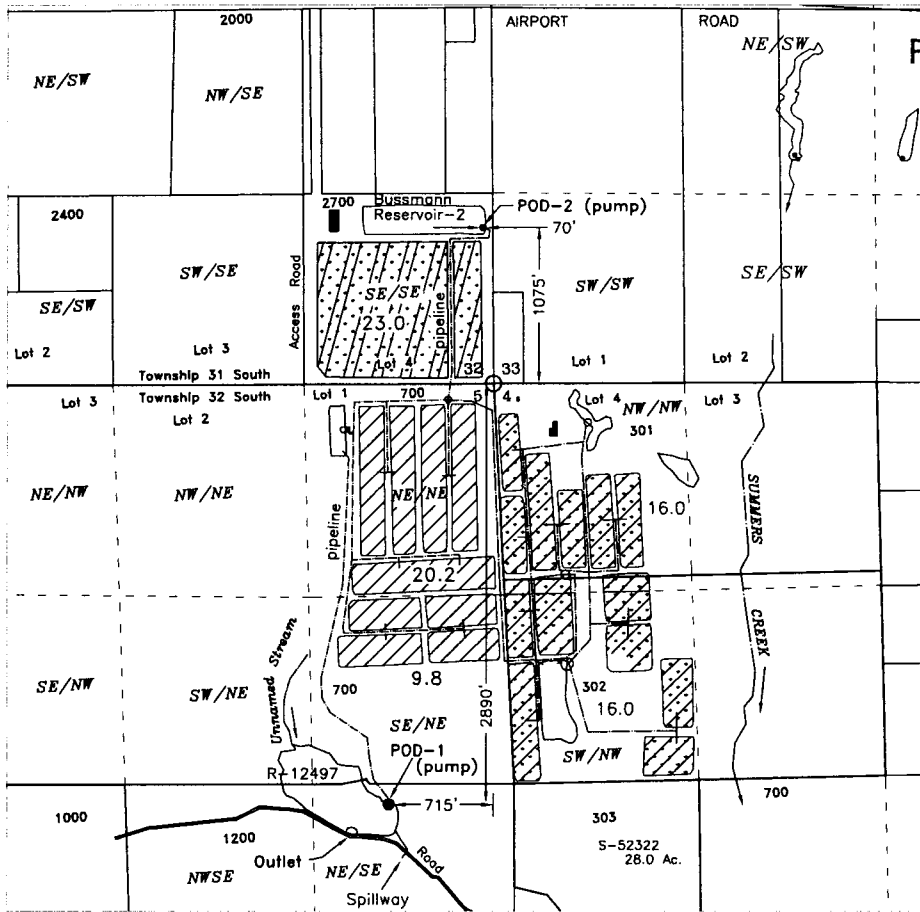


APPLICATION TO STORE & USE WATER

IN THE NAME OF: BUSSMANN CRANBERRIES, LLC

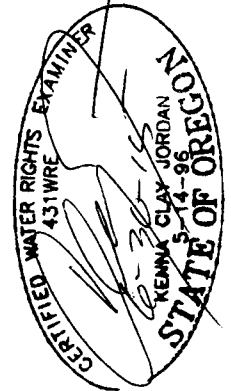
TOWNSHIP 31 & 32 SOUTH, RANGE 15 WEST, W.M.
CURRY COUNTY OREGON



RECEIVED BY OWRD

MAR 11 2015


SALEM, OR




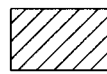
POD-1
Bussmann Reservoir (R-12497)
(Existing)

POD-2
Bussmann Reservoir-2

ALTERNATE REVIEW APPLICATION
STORAGE - 100 ACRE- FEET
Filled from runoff including bog runoff

 SUPPLEMENTAL CRANBERRY OPERATIONS
55 ACRES

 CRANBERRY OPERATIONS - 23 ACRES

 SUPPLEMENTAL CRANBERRY OPERATIONS
62 ACRES



Scale

1 inch = 1320 feet

BUSSMANN CRANBERRIES, INC
P.O. BOX 312
SIXES, OR 97476

JORDAN ENGINEERING
460 JORDAN LANE
ROSEBURG, OR 97471
(541) 673-1931

BASE MAP:
2005 FSA and 8/15/2014 Oregon Map aerial photos
over County GIS tax lots for assumed best fit

This map is not intended to provide
legal dimensions or locations of
property ownership lines

Rev. 1/22/2015 n.e.d.

R-88062