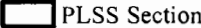
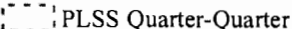



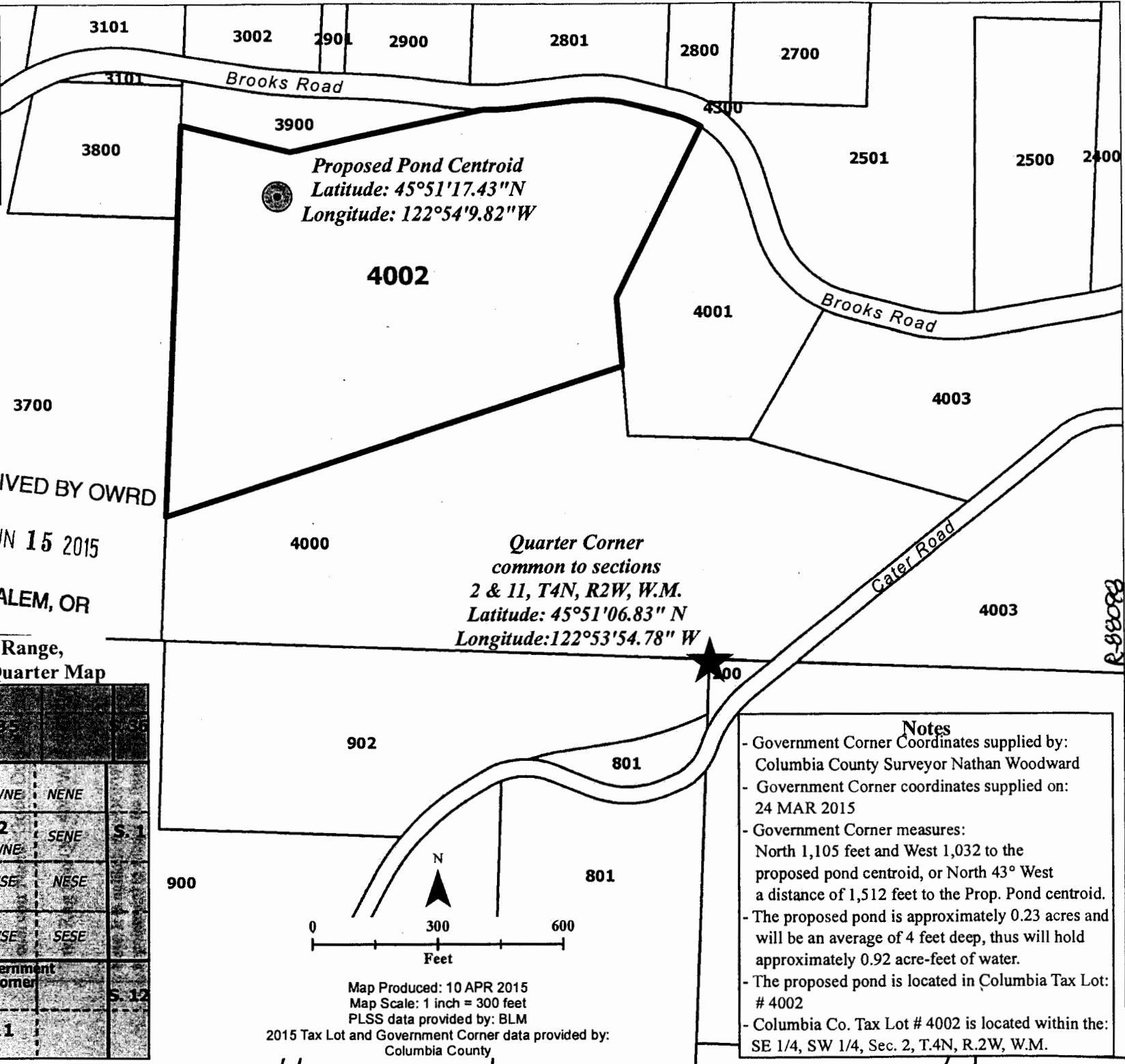


Legend

-  PLSS Section
-  PLSS Quarter-Quarter
-  Government Corner
-  Proposed Pond Location
-  Tax Lot - Columbia County

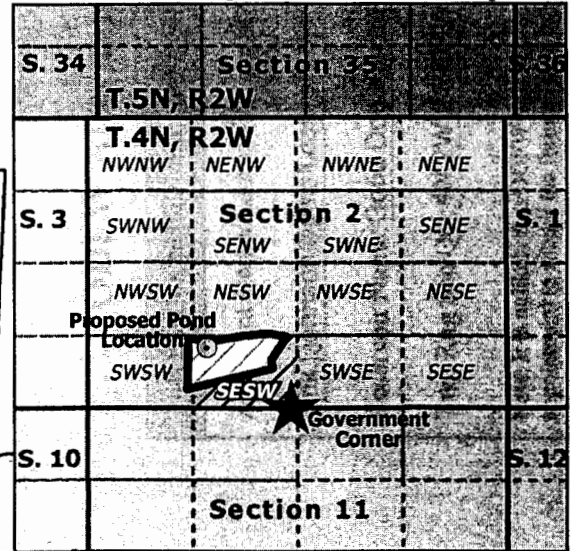


RECEIVED BY OWRD
 JUN 15 2015
 SALEM, OR

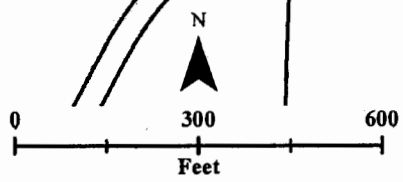
Proposed Pond Centroid
 Latitude: 45°51'17.43"N
 Longitude: 122°54'9.82"W

Quarter Corner
 common to sections
 2 & 11, T.4N, R.2W, W.M.
 Latitude: 45°51'06.83" N
 Longitude: 122°53'54.78" W

**PLSS Township, Range,
 Section & Quarter-Quarter Map**



- Notes**
- Government Corner Coordinates supplied by: Columbia County Surveyor Nathan Woodward
 - Government Corner coordinates supplied on: 24 MAR 2015
 - Government Corner measures: North 1,105 feet and West 1,032 to the proposed pond centroid, or North 43° West a distance of 1,512 feet to the Prop. Pond centroid.
 - The proposed pond is approximately 0.23 acres and will be an average of 4 feet deep, thus will hold approximately 0.92 acre-feet of water.
 - The proposed pond is located in Columbia Tax Lot: # 4002
 - Columbia Co. Tax Lot # 4002 is located within the: SE 1/4, SW 1/4, Sec. 2, T.4N, R.2W, W.M.



Map Produced: 10 APR 2015
 Map Scale: 1 inch = 300 feet
 PLSS data provided by: BLM
 2015 Tax Lot and Government Corner data provided by: Columbia County

SALEM, OR

JUN 15 2015

RECEIVED BY OWRD

