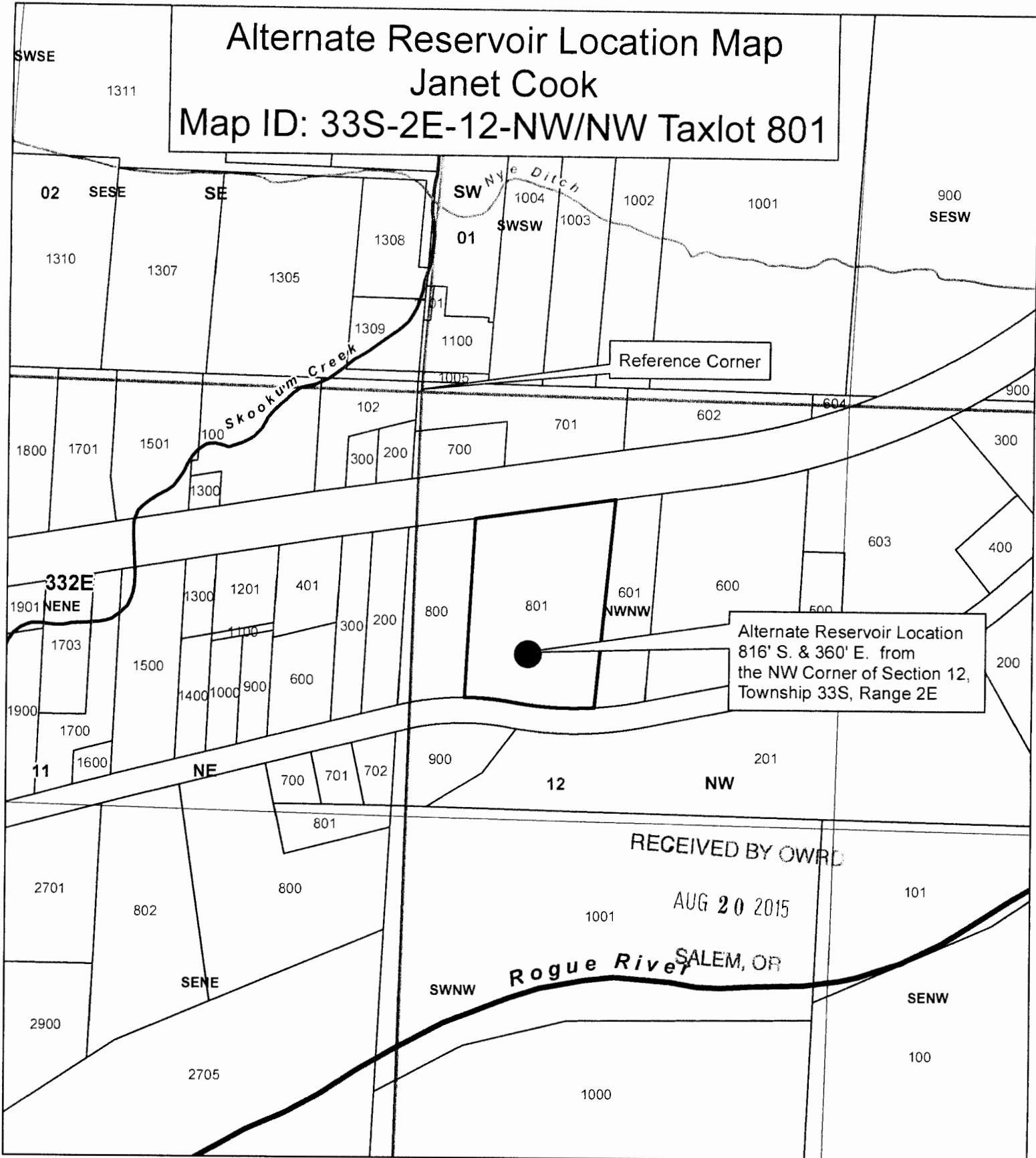


Alternate Reservoir Location Map

Janet Cook

Map ID: 33S-2E-12-NW/NW Taxlot 801



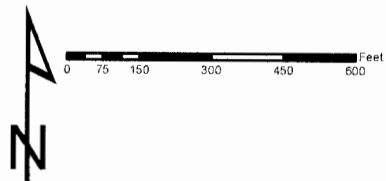
Alternate Reservoir Location
 816' S. & 360' E. from
 the NW Corner of Section 12,
 Township 33S, Range 2E

RECEIVED BY OWRD
 AUG 20 2015
 SALEM, OR

Legend

- Alt. Reservoir
- Taxlot 801
- Taxlots
- Townships
- Sections
- Quarter Sections
- Quarter Quarter Sections

1 inch = 400 feet



JACKSON COUNTY
WATERMASTER

Prepared by Travis Kelly

This map is based on a digital database compiled by Jackson County from a variety of sources. Jackson County cannot accept responsibility for errors, omissions, or positional accuracy. There are no warranties, expressed or implied.

12-88121

Hwy 62

450 Mill Cr Dr
Prosper, OR
Lot 801

Road on Property

Convent

Spring

50'

Pond

110'

Front
on
Property

75'

out Let Control

RECEIVED BY OWRD

AUG 20 2015

SALEM, OR

Mill Cr. Dr.
Road

R-88121

To Rainier Reservoir