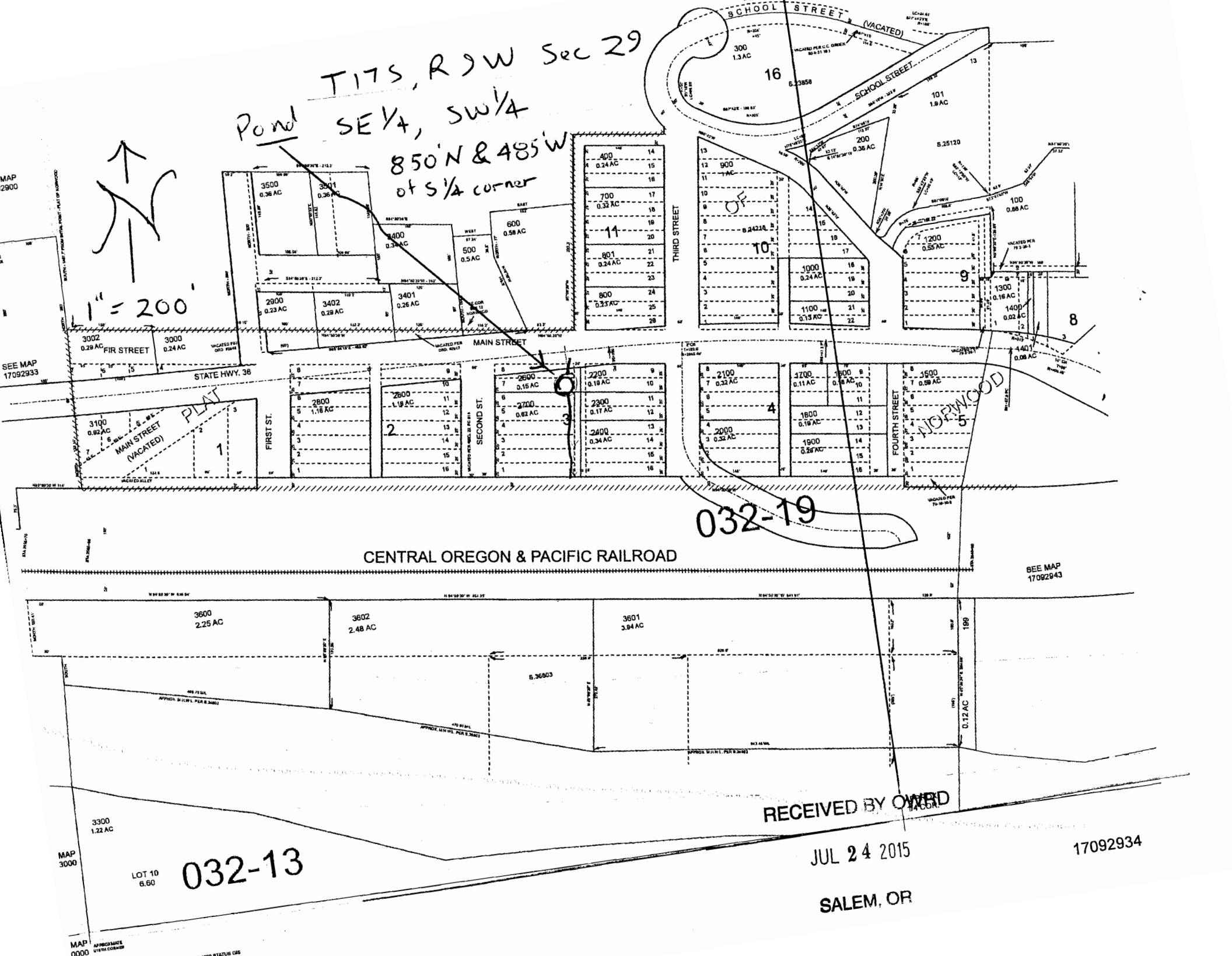


T17S, R9W Sec 29
Pond SE 1/4, SW 1/4
850' N & 485' W
of S 1/4 corner



032-19

CENTRAL OREGON & PACIFIC RAILROAD

032-13

RECEIVED BY OWRD

JUL 24 2015

SALEM, OR

17092934

MAP 2900

SEE MAP 17092933

SEE MAP 17092943

MAP 3000

MAP 0000

LOT 10 6.60

3300 1.22 AC

3600 2.25 AC

3602 2.48 AC

3601 3.84 AC

5.36803

199

0.12 AC

APPROXIMATE 1/4 SECTION CORNERS

STATUS GIS