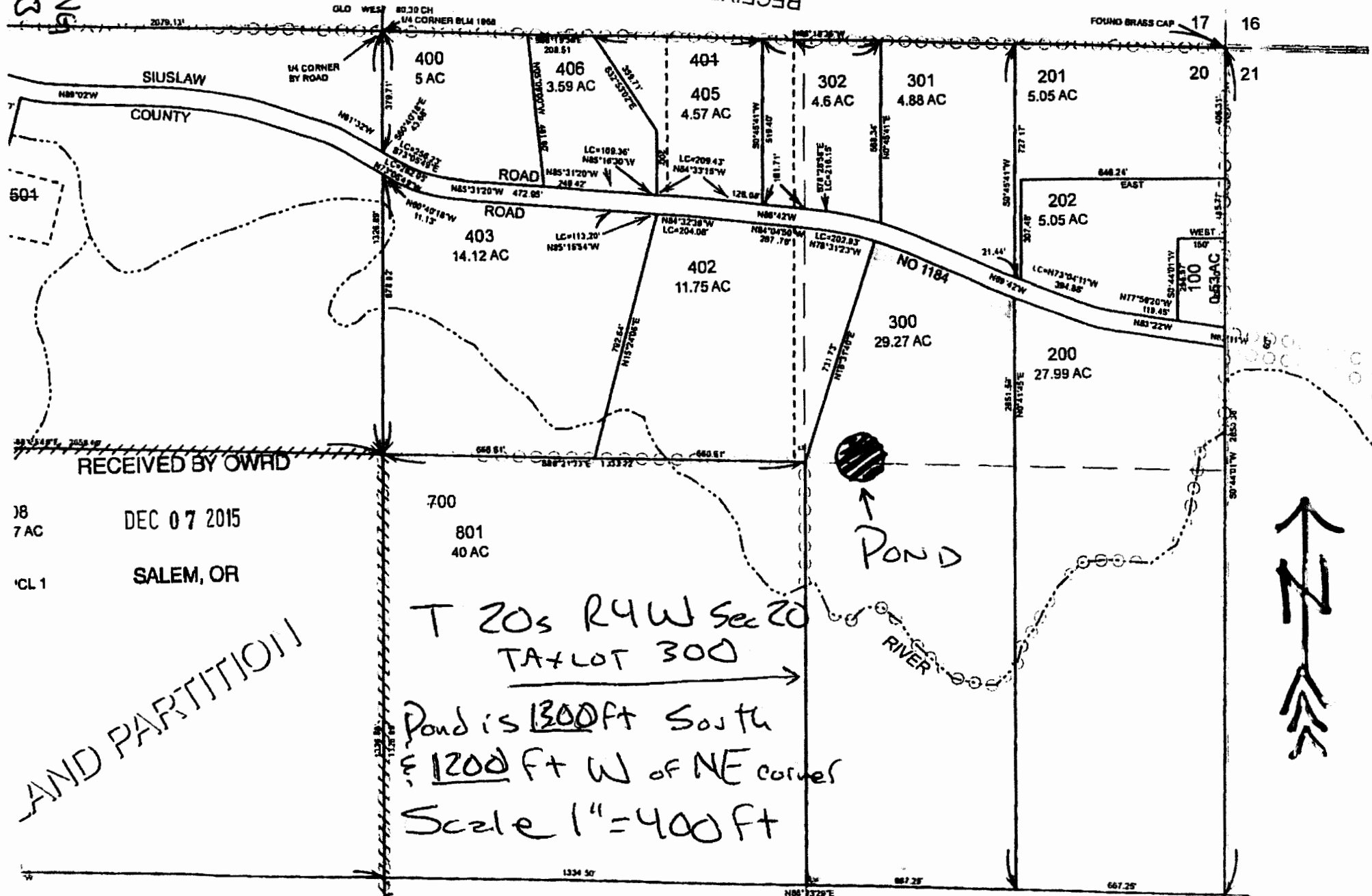


SUPERSEDED  
R-08153

SALEM, OR

MAR 14 2016

RECEIVED BY OWRD



RECEIVED BY OWRD

JB  
7 AC  
CL 1  
DEC 07 2015  
SALEM, OR

AND PARTITION

T 20s R4W Sec 20  
TA+LOT 300  
Pond is 1300ft South  
& 1200ft W of NE corner  
Scale 1"=400ft

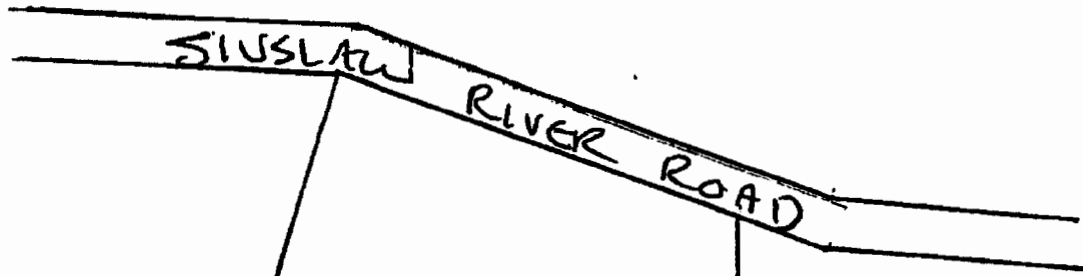
000 10

SEE MAP

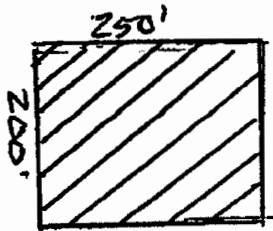
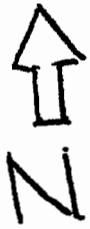
RECEIVED BY OWRD

MAR 14 2016

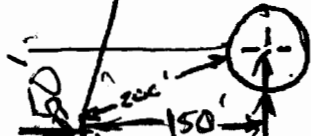
SALEM, OR



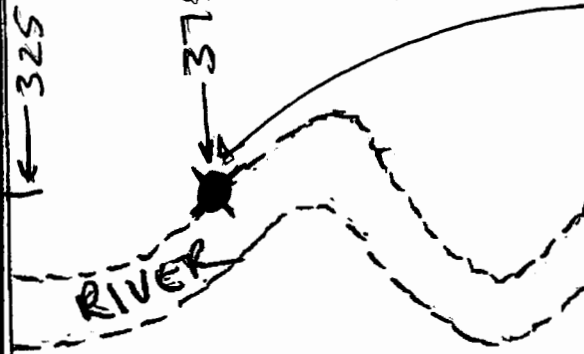
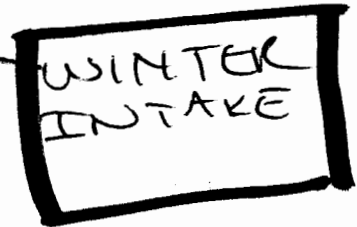
28.38 ± AC



← proposed pond



E COR. NW 1/4 = NE 1/4



20 05 20 300

ADDED TO  
 10000  
 20000

SCALE 1" = 200'

SW COR. W 1/2 - E 1/2 - NE 1/4

SUPERSEDING R-88153

SE COR. - W 1/2 - E 1/2 - NE 1/4

667