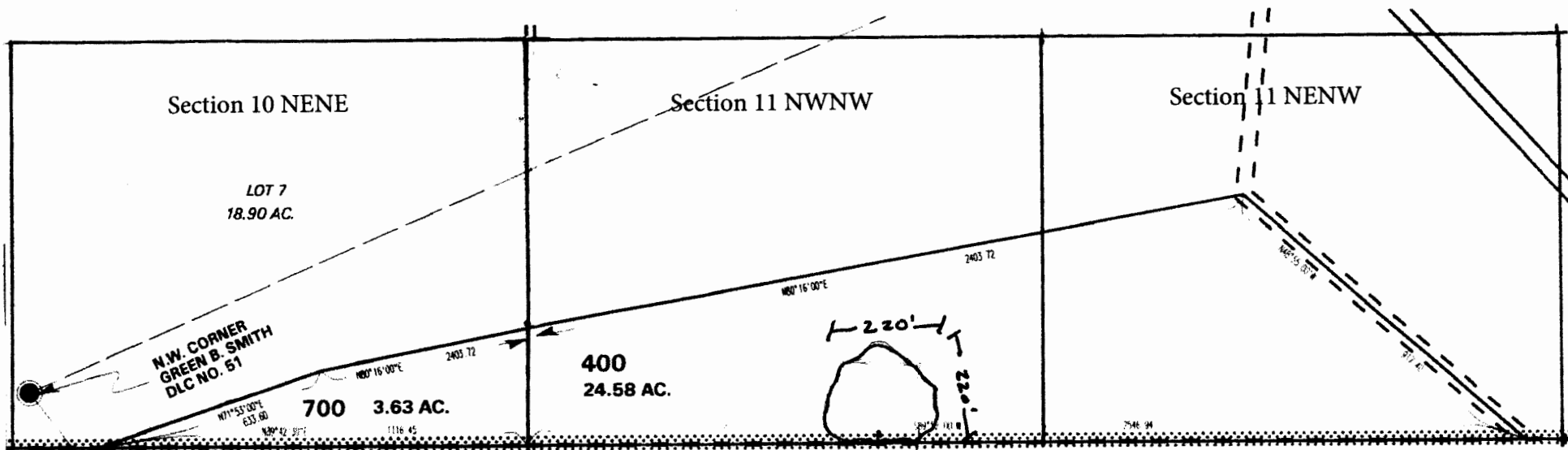


T 10 S, R 5 W



Reservoir located approximately 920' South and 920' East from the NE Corner of Section 10



1" = 400'

RECEIVED

JAN 11 2016

WATER RESOURCES DEPT
SALEM, OREGON

RECEIVED

JAN 07 2016

WATER RESOURCES DEPT
SALEM, OREGON

R-00166