



Scale  
1" = 880'

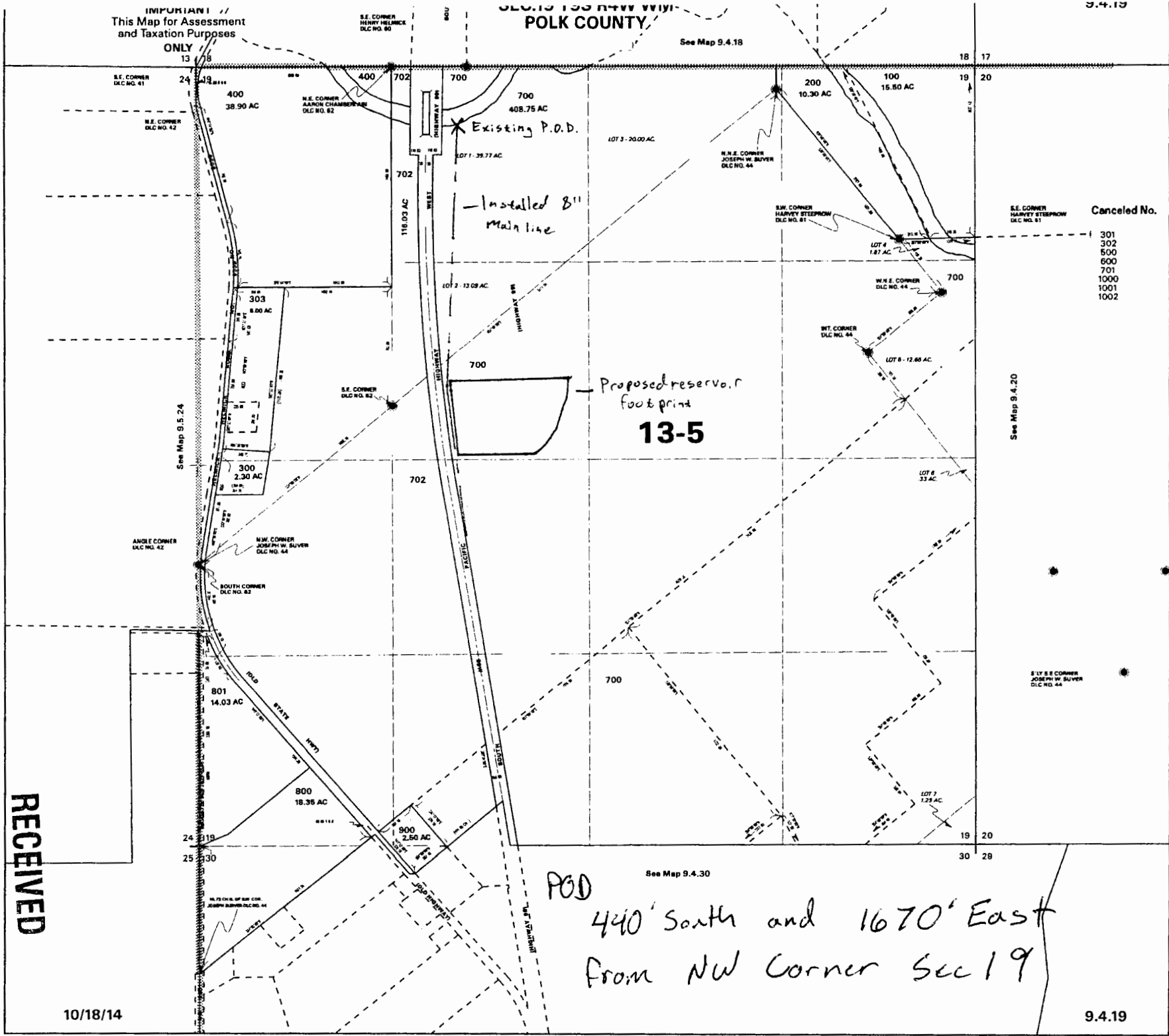
R-83148

IMPORTANT  
This Map for Assessment  
and Taxation Purposes  
ONLY

SEC. 19 T3S R44W W1/2  
POLK COUNTY

See Map 9.4.18

9.4.19



Canceled No.

- 301
- 302
- 500
- 600
- 701
- 1000
- 1001
- 1002

Proposed reservoir  
Footprint  
**13-5**

P.O.D.

440' South and 1670' East  
from NW Corner Sec 19

RECEIVED

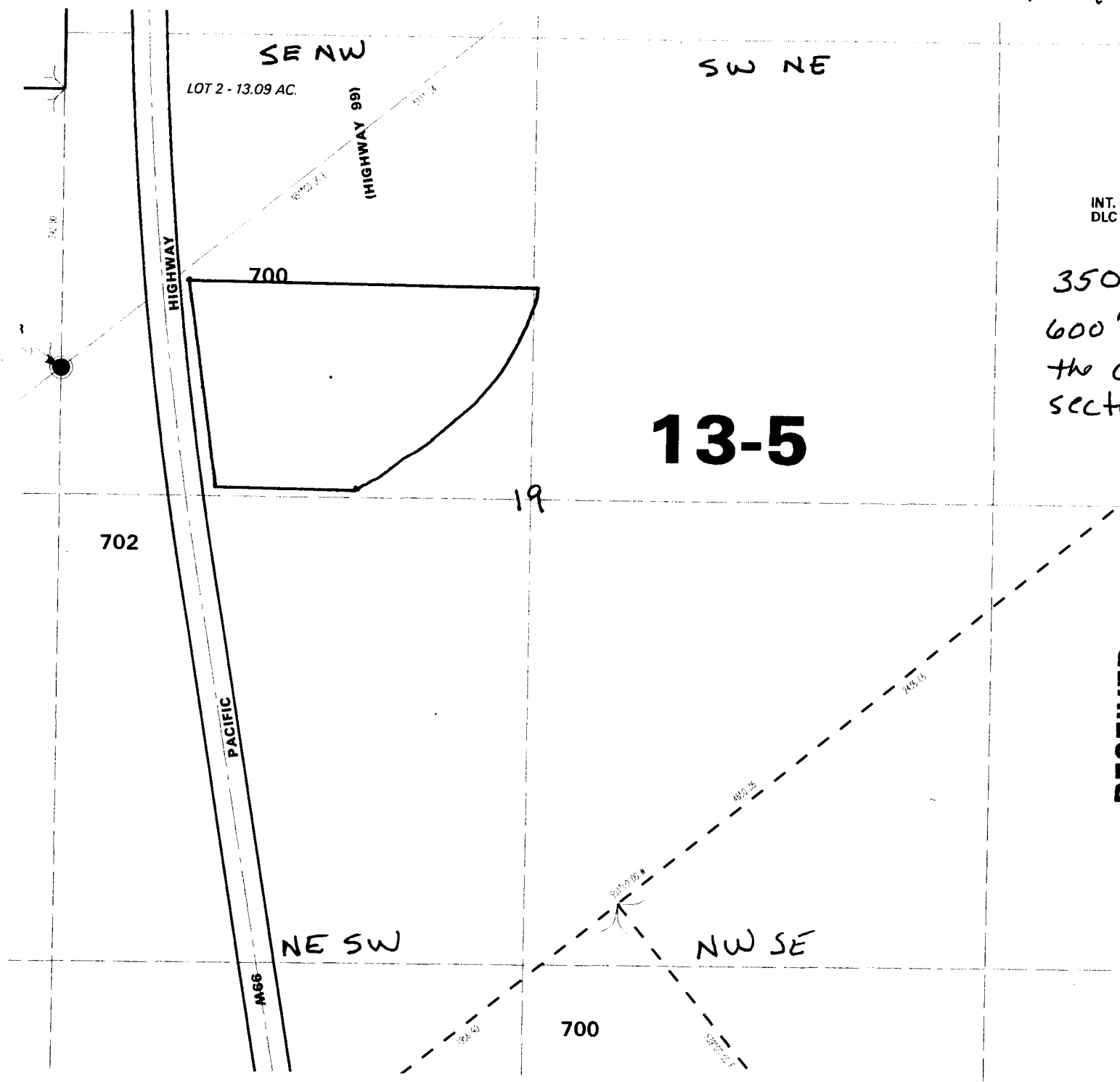
NOV 16 2015

OWPRD

10/18/14

9.4.19

R-88148



**RECEIVED**  
 NOV 16 2015  
 OWRD