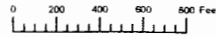


THIS MAP WAS PREPARED FOR ASSESSMENT PURPOSE ONLY



SECTION 36 T.7S. R.45E. W.M. BAKER COUNTY 1" = 400'

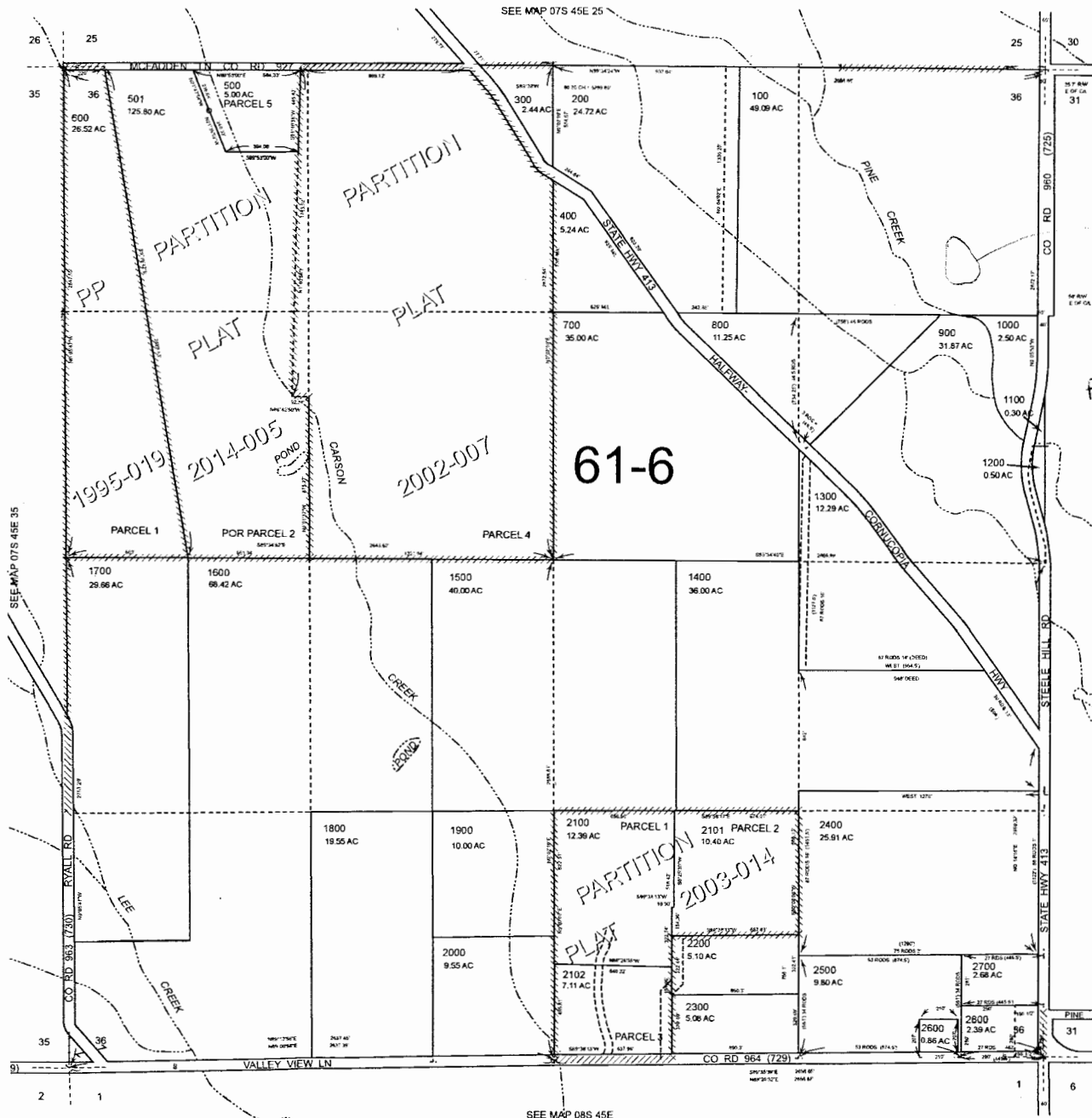
07S45E36

Cancelled 502 2900

RECEIVED BY OWRD

APR 29 2016

SALEM, OR



POUND LOCATION
1150' SOUTH AND 300' WEST FROM NE CORNER OF SECT 36 T.7S, R.45E

61-6

PARTITION PLAT 2003-014

1995-019

2014-005

2002-007

SEE MAP 07S 46E 31

SEE MAP 07S 45E 35

SEE MAP 08S 45E

Revised: DBJ 09/09/2014

07S45E36

R-88219