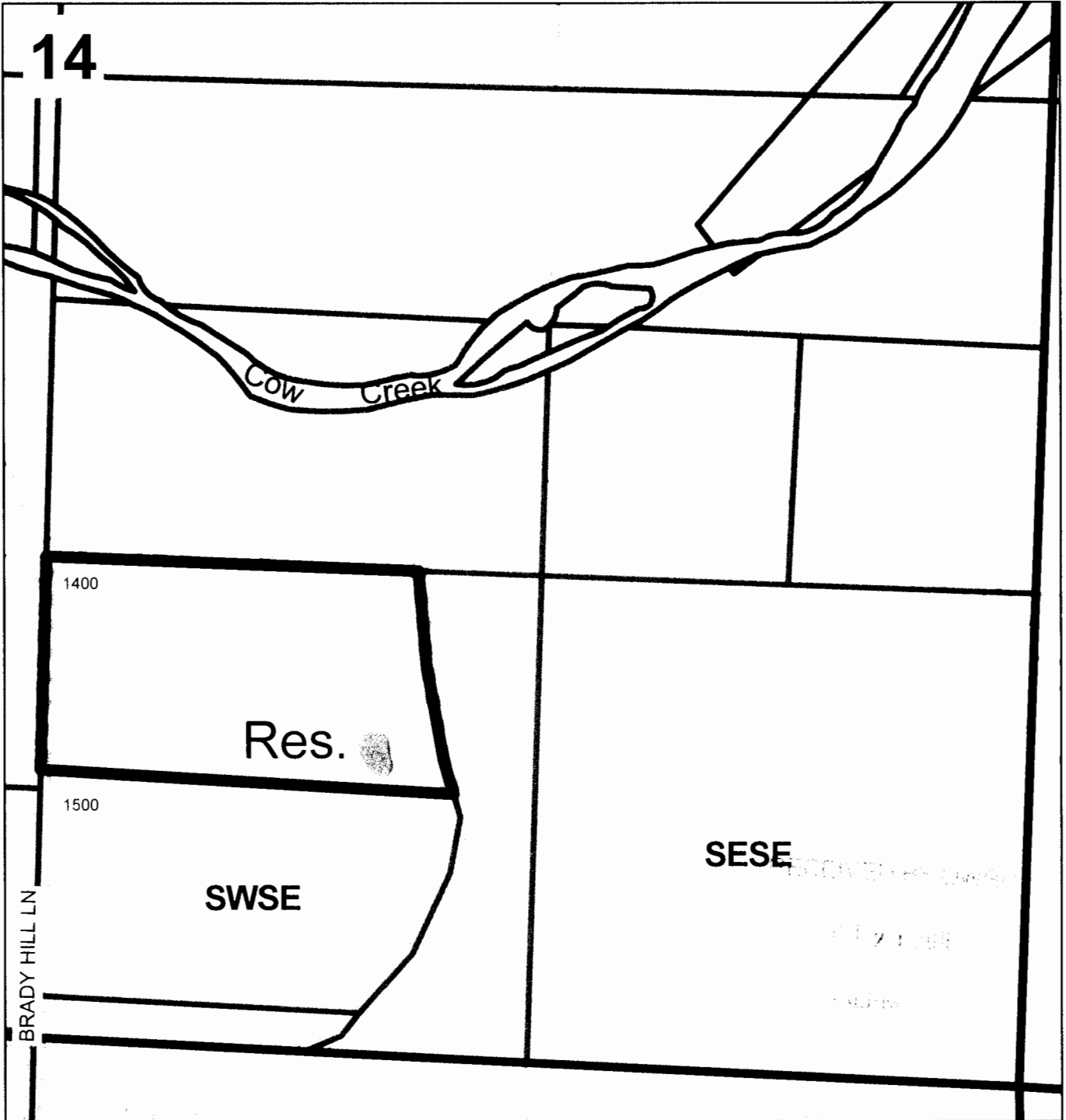
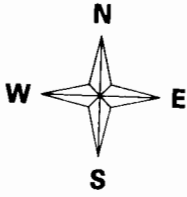
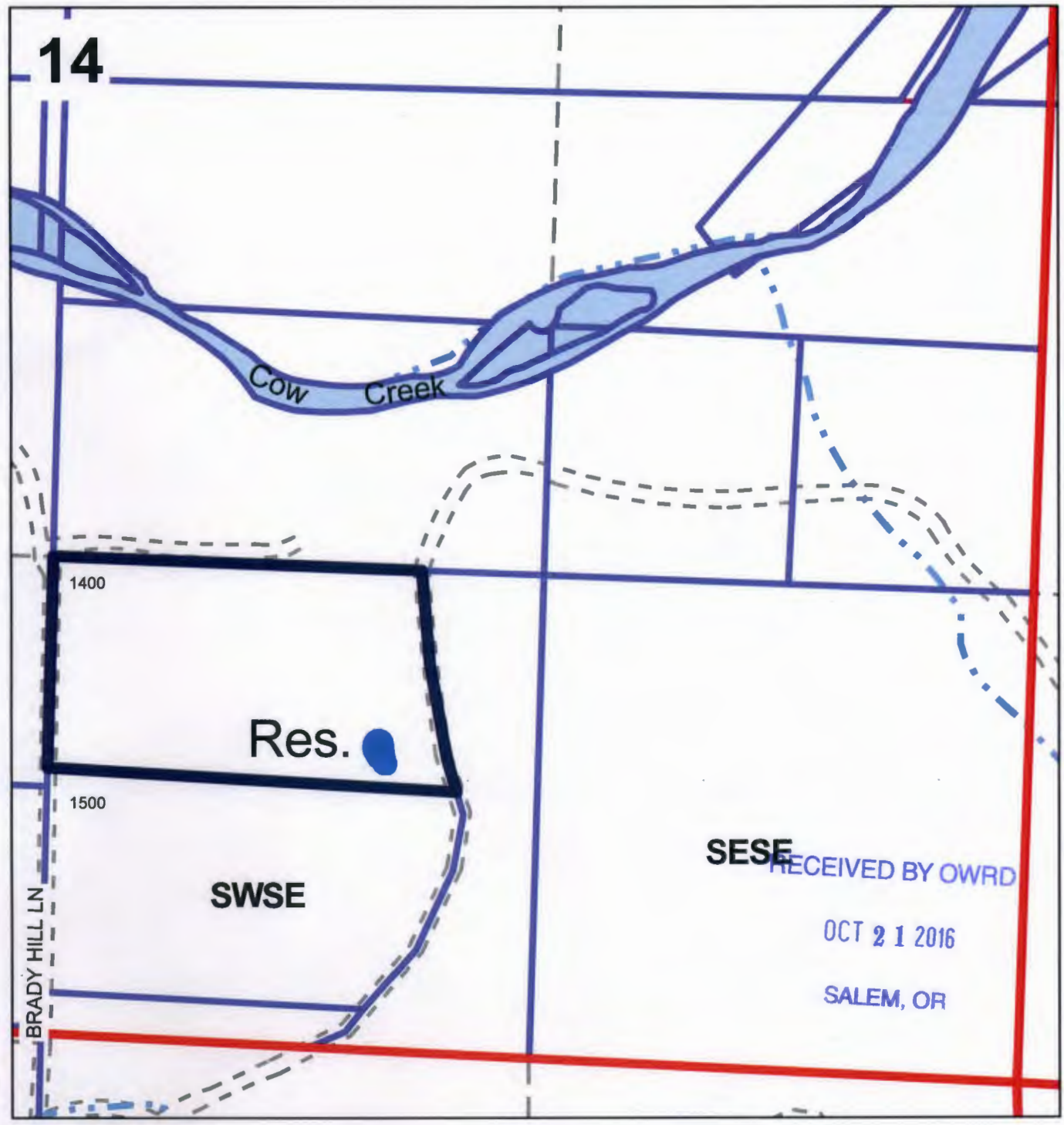


Reservoir Application Map
Gene Woida
SWSE 1/4 of Sec. 14 T.32S. R.5W.
Douglas County
Scale: 1" = 400'



Reservoir is located 1770 ft. South and 890 ft. East from the center of Section 14.

Reservoir Application Map
Gene Woida
SWSE 1/4 of Sec. 14 T.32S. R.5W.
Douglas County
Scale: 1" = 400'



Reservoir is located 1770 ft. South and 890 ft. East from the center of Section 14.

R-88106