

ALTERNATIVE RESERVOIR APPLICATION MAP

LOCATED IN

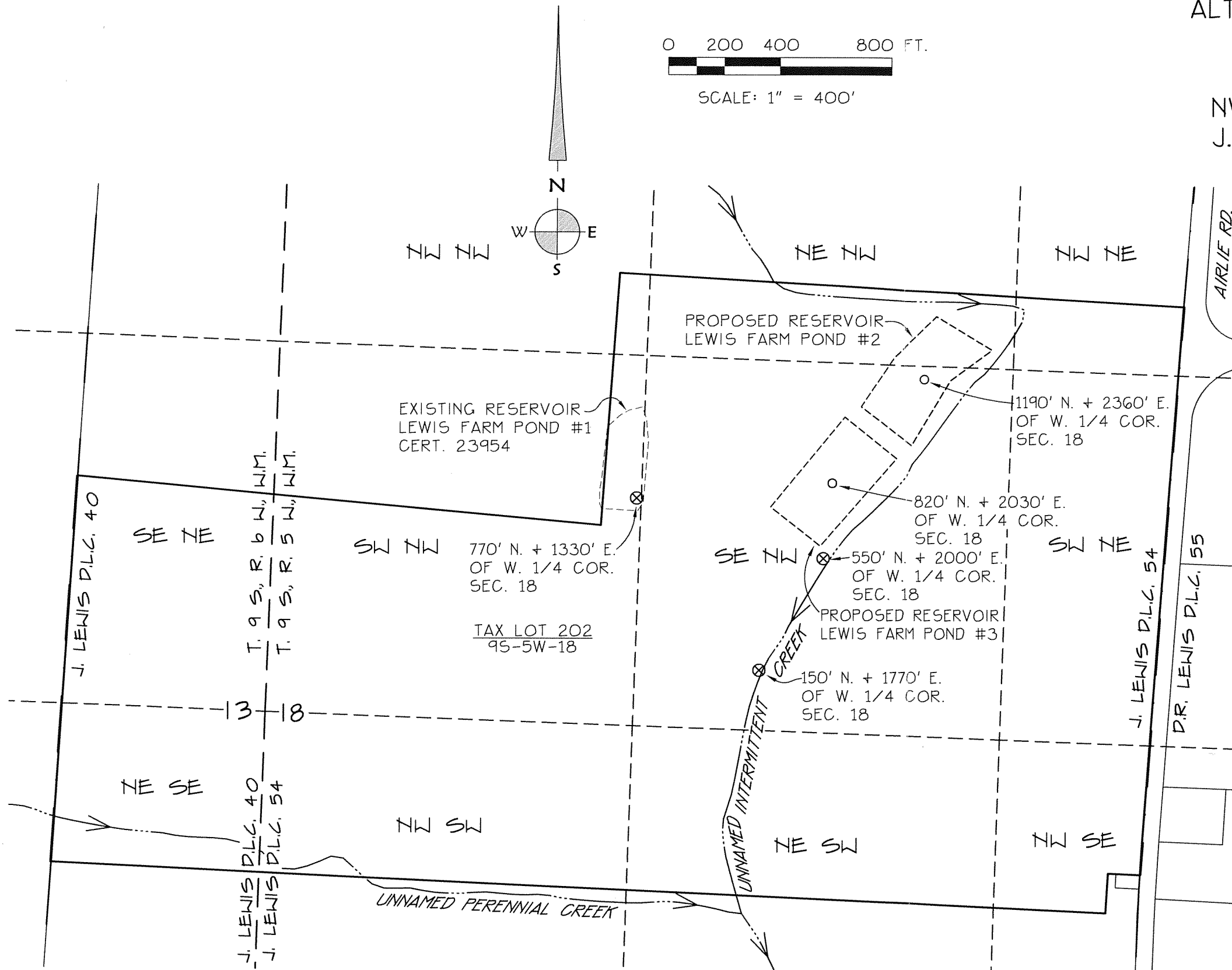
TAX LOT 202, MAP 95-5W-18
 NW 1/4, SEC. 18, T. 9 S., R. 5 W., W.M.
 J. LEWIS DONATION LAND CLAIM No. 54
 POLK COUNTY, OREGON

NOVEMBER 2, 2016

RECEIVED

DEC 12 2016

WATER RESOURCES DEPT
 SALEM, OREGON



LEGEND:

- CENTER OF RESERVOIR (DAM ON ALL SIDES OF POND)
- ⊗ SOURCE FOR LEWIS FARM POND #2 AND LEWIS FARM POND #3, WATER TO BE PUMPED INTO PONDS

NOTES:

- 1) GIS DATA FROM POLK COUNTY DATABASE
- 2) THIS MAP IS NOT INTENDED TO PROVIDE LEGAL DIMENSIONS OR LOCATIONS OF PROPERTY OWNERSHIP LINES.



K & D ENGINEERING, Inc.
 276 N.W. Hickory Street P.O. Box 725
 Albany, Oregon 97321
 (541) 928-2583

Date: 11/2/2016 Time: 9:32
 View: VIEW Scale: 1=400(PS)
 File: dwg\2016\16-193\16-193-alt-res.dwg (lan)

R88343