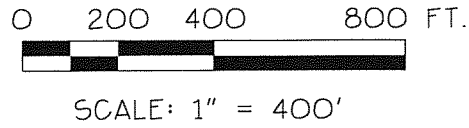


**RECEIVED**

DEC 12 2016

WATER RESOURCES DEPT  
SALEM, OREGON

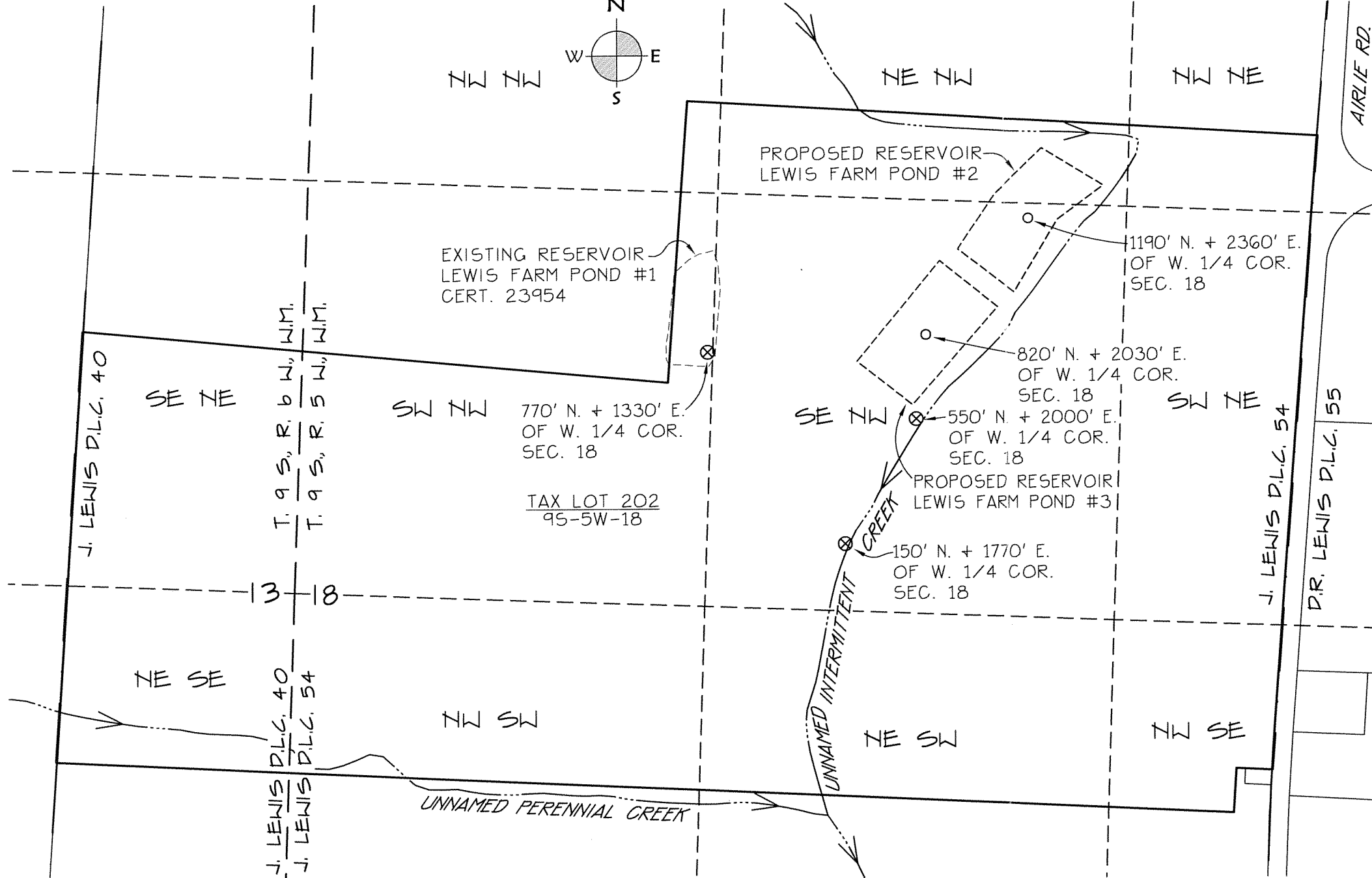


# ALTERNATIVE RESERVOIR APPLICATION MAP

LOCATED IN

TAX LOT 202, MAP 95-5W-18  
NW 1/4, SEC. 18, T. 9 S., R. 5 W., W.M.  
J. LEWIS DONATION LAND CLAIM No. 54  
POLK COUNTY, OREGON

NOVEMBER 2, 2016



### LEGEND:

- CENTER OF RESERVOIR (DAM ON ALL SIDES OF POND)
- ⊗ SOURCE FOR LEWIS FARM POND #2 AND LEWIS FARM POND #3, WATER TO BE PUMPED INTO PONDS

### NOTES:

- 1) GIS DATA FROM POLK COUNTY DATABASE
- 2) THIS MAP IS NOT INTENDED TO PROVIDE LEGAL DIMENSIONS OR LOCATIONS OF PROPERTY OWNERSHIP LINES.



**K & D ENGINEERING, Inc.**  
 276 N.W. Hickory Street P.O. Box 725  
 Albany, Oregon 97321  
 (541) 928-2583

Date: 11/2/2016 Time: 9:32  
 View: VIEW Scale: 1=400(P5)  
 File: dwg\2016\16-193\16-193-alt-res.dwg (lan)