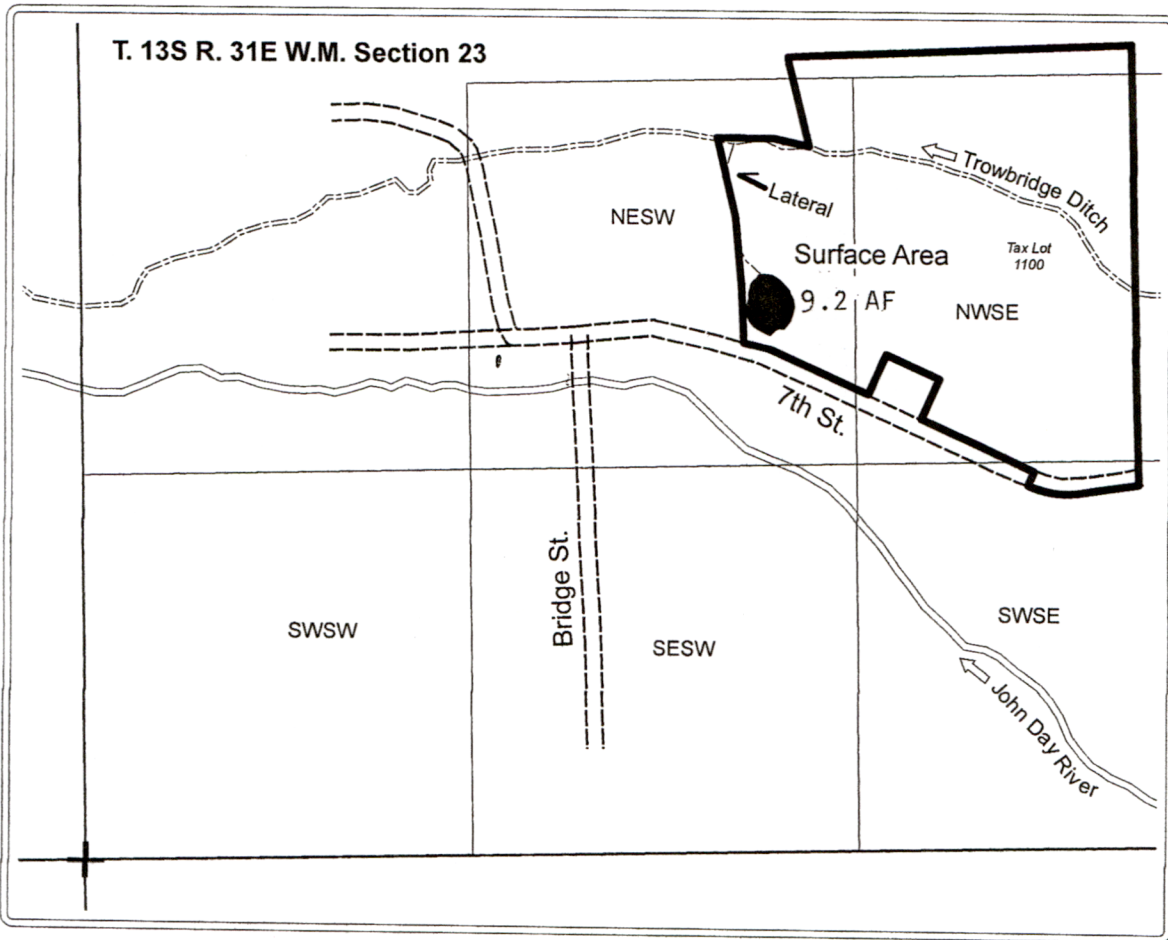
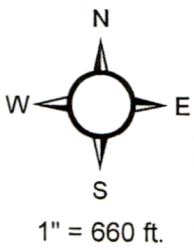


**Application for an Alternate Review Reservoir  
For  
John Day / Canyon City  
Parks and Recreation Department**



Pond is located approximately 1929 ft north and 2314 ft east of the SW corner of Section 23 of T. 13S R. 31E W.M. being within the NESW of Section 23, T. 13S R. 31E W.M.

Trowbridge Ditch Point of Diversion : Approximately 546 ft south and 667 ft west of the NE corner of Section 25 of T. 13S R. 31E W.M. being within the NENE of Section 25, T. 13S R. 31E W.M.

**Legend**

- Proposed Pond
- Trowbridge Ditch
- Lateral

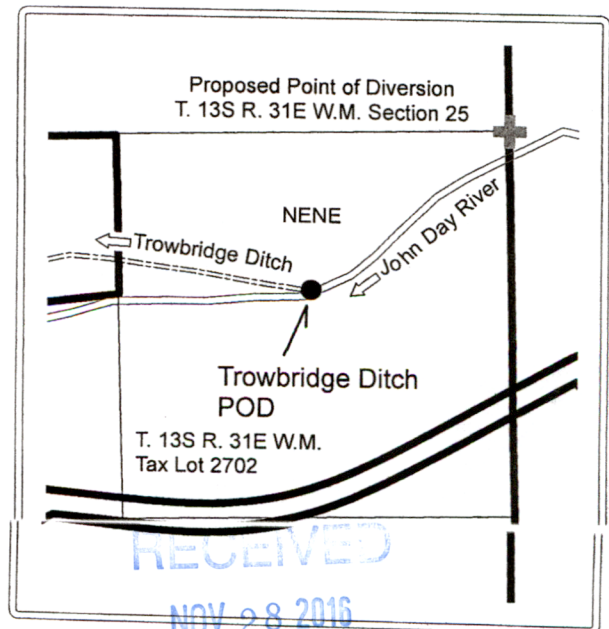
**Taxlot Boundary**

- Tax Lot Boundary

RECEIVED BY OWRD

NOV 14 2016

SALEM, OR



RECEIVED

NOV 28 2016

OWRD  
SALEM, OREGON

R-88316