

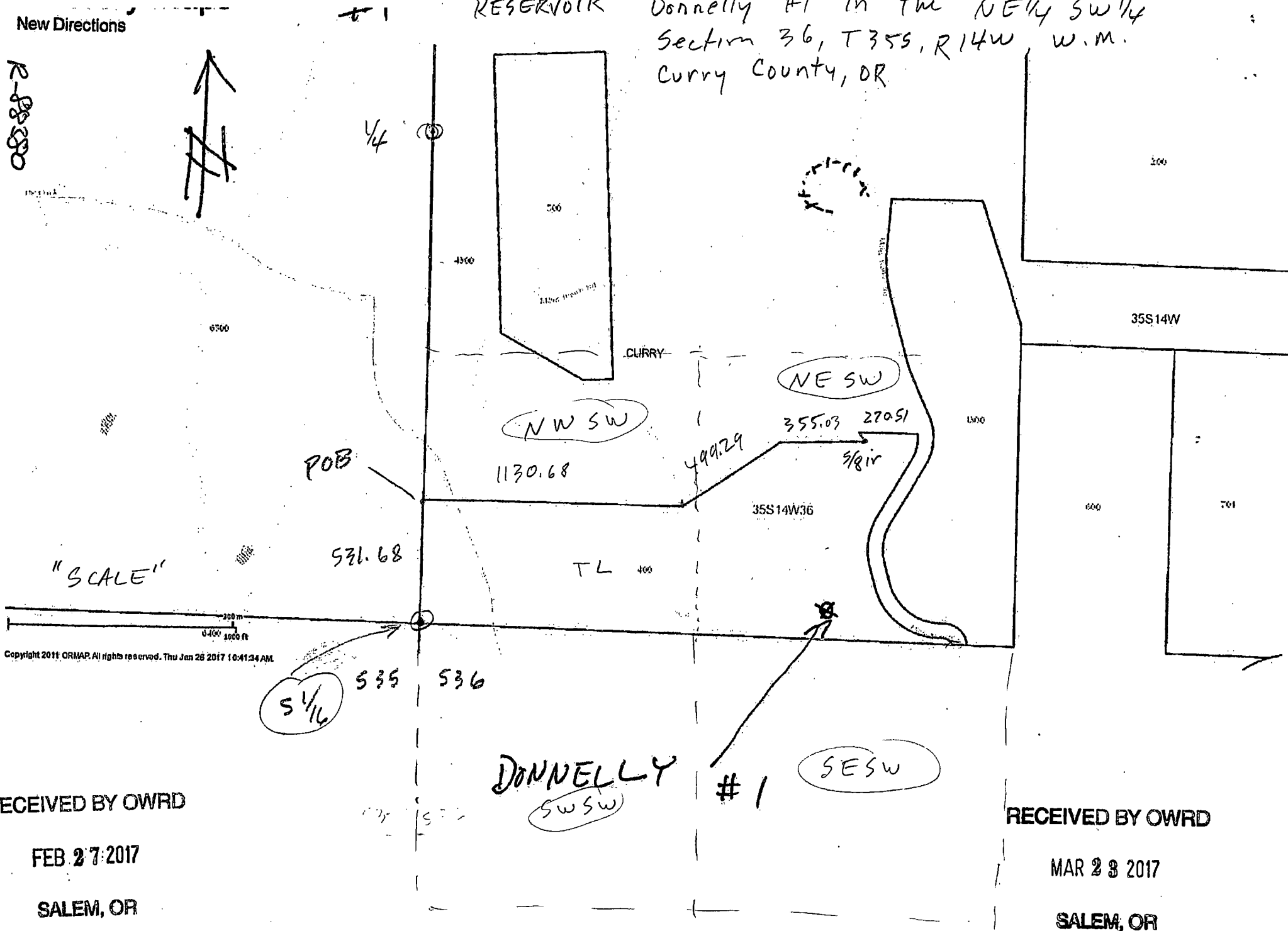
New Directions

R-88880



RESERVOIR

Donnelly #1 in the NE 1/4 SW 1/4 Section 36, T35S, R14W W.M. Curry County, OR



Copyright 2011 ORMAP. All rights reserved. Thu Jan 28 2017 10:41:34 AM

RECEIVED BY OWRD

FEB 27 2017

SALEM, OR

RECEIVED BY OWRD

MAR 23 2017

SALEM, OR