

ZACHARY WELCH
 MANDOLIN CREEK POND 1,
 POND 2, AND POND 3
 EXHIBIT MAP
 MAY 19, 2017

TAXLOT 1300, MAP 11705

RESERVOIRS LOCATED IN THE NW 1/4 OF
 THE NE 1/4 OF SECTION 8 TOWNSHIP 11
 SOUTH, RANGE 7 WEST, W.M.
 BENTON COUNTY, OREGON

LEGEND

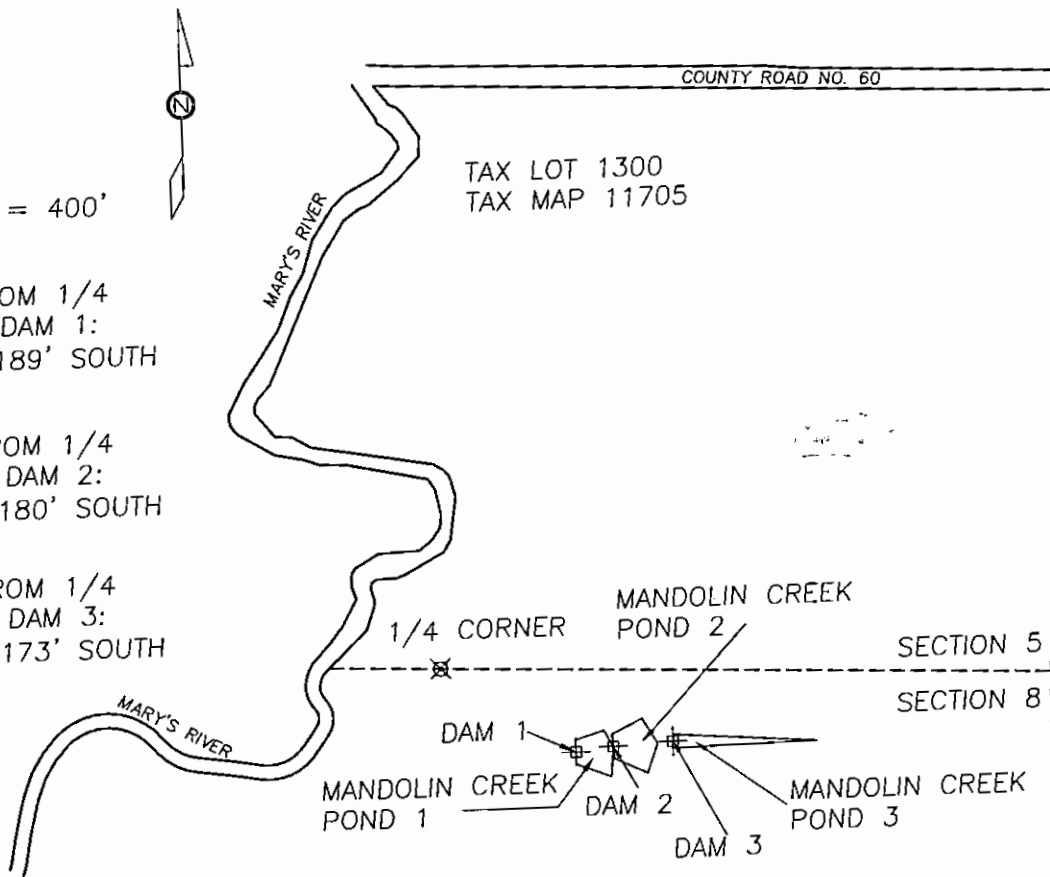
- TAXLOT BOUNDARY
- - - SECTION BOUNDARY
- ⊕ DAM
- ⊗ 1/4 CORNER MONUMENT

SCALE 1" = 400'

DISTANCE FROM 1/4
 CORNER TO DAM 1:
 287' EAST, 189' SOUTH

DISTANCE FROM 1/4
 CORNER TO DAM 2:
 367' EAST, 180' SOUTH

DISTANCE FROM 1/4
 CORNER TO DAM 3:
 497' EAST, 173' SOUTH



RECEIVED

NOV 02 2017

OWRD

JDMcGee, Inc.

Engineering & Surveying 1215 Main Street
 Land Use Planning PO Box 1472
 Wastewater Design Philomath, OR 97370
 "Solving Problems for You" (541) 929-4226
 (541) 929-4227 Fax

SUPERSEDING

DRAWN BY: RJM
 JDM PROJECT #: 16-75

CHECKED BY: JDM