

ZACHARY WELCH  
 MANDOLIN CREEK POND 1,  
 POND 2, AND POND 3  
 EXHIBIT MAP  
 MAY 19, 2017

TAXLOT 1300, MAP 11705

RESERVOIRS LOCATED IN THE NW 1/4 OF  
 THE NE 1/4 OF SECTION 8 TOWNSHIP 11  
 SOUTH, RANGE 7 WEST, W.M.  
 BENTON COUNTY, OREGON

**LEGEND**

- TAXLOT BOUNDARY
- - - SECTION BOUNDARY
- ⊕ DAM
- ⊗ 1/4 CORNER MONUMENT

SCALE 1" = 400'

DISTANCE FROM 1/4  
 CORNER TO DAM 1:  
 287' EAST, 189' SOUTH

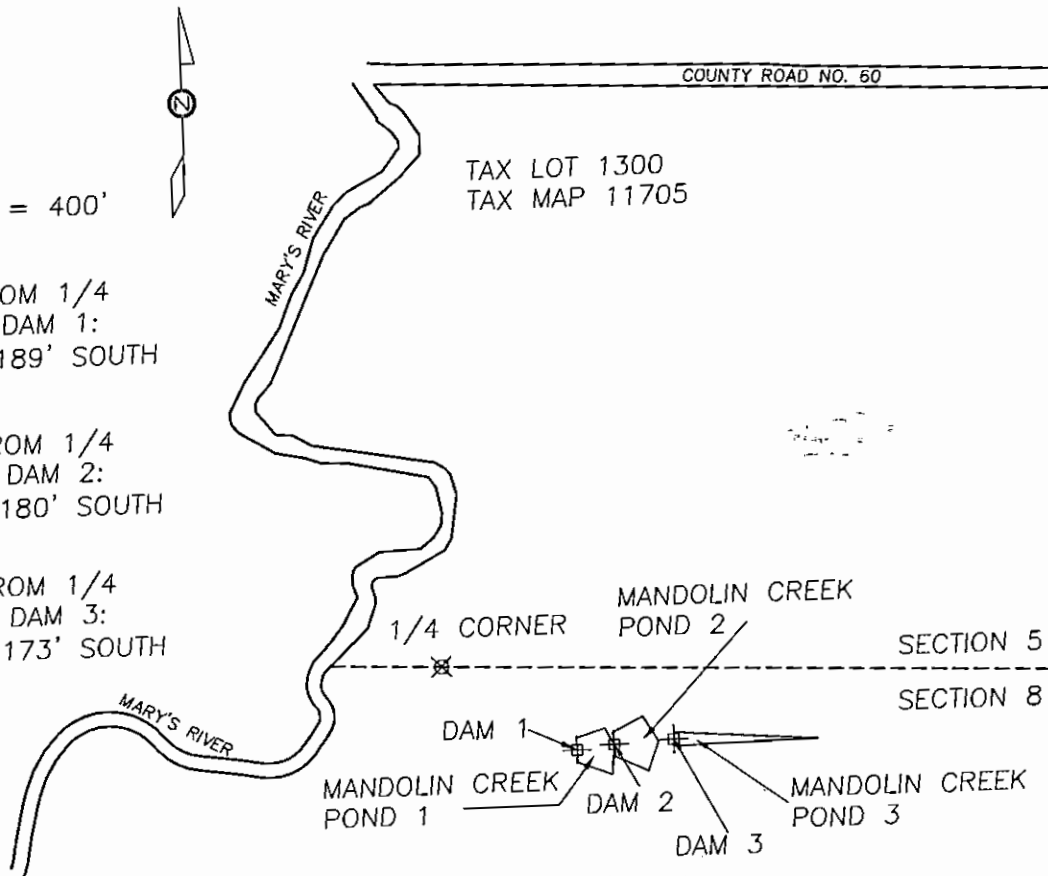
DISTANCE FROM 1/4  
 CORNER TO DAM 2:  
 367' EAST, 180' SOUTH

DISTANCE FROM 1/4  
 CORNER TO DAM 3:  
 497' EAST, 173' SOUTH

**RECEIVED**

NOV 02 2017

**OWRD**



**JDMcGee, Inc.**

Engineering & Surveying 1215 Main Street  
 Land Use Planning PO Box 1472  
 Wastewater Design Philomath, OR 97370  
 "Solving Problems for You" (541) 929-4226  
 (541) 929-4227 fax

DRAWN BY: RJM  
 JDM PROJECT #: 16-75

CHECKED BY: JDM

**SUPERSEDING**