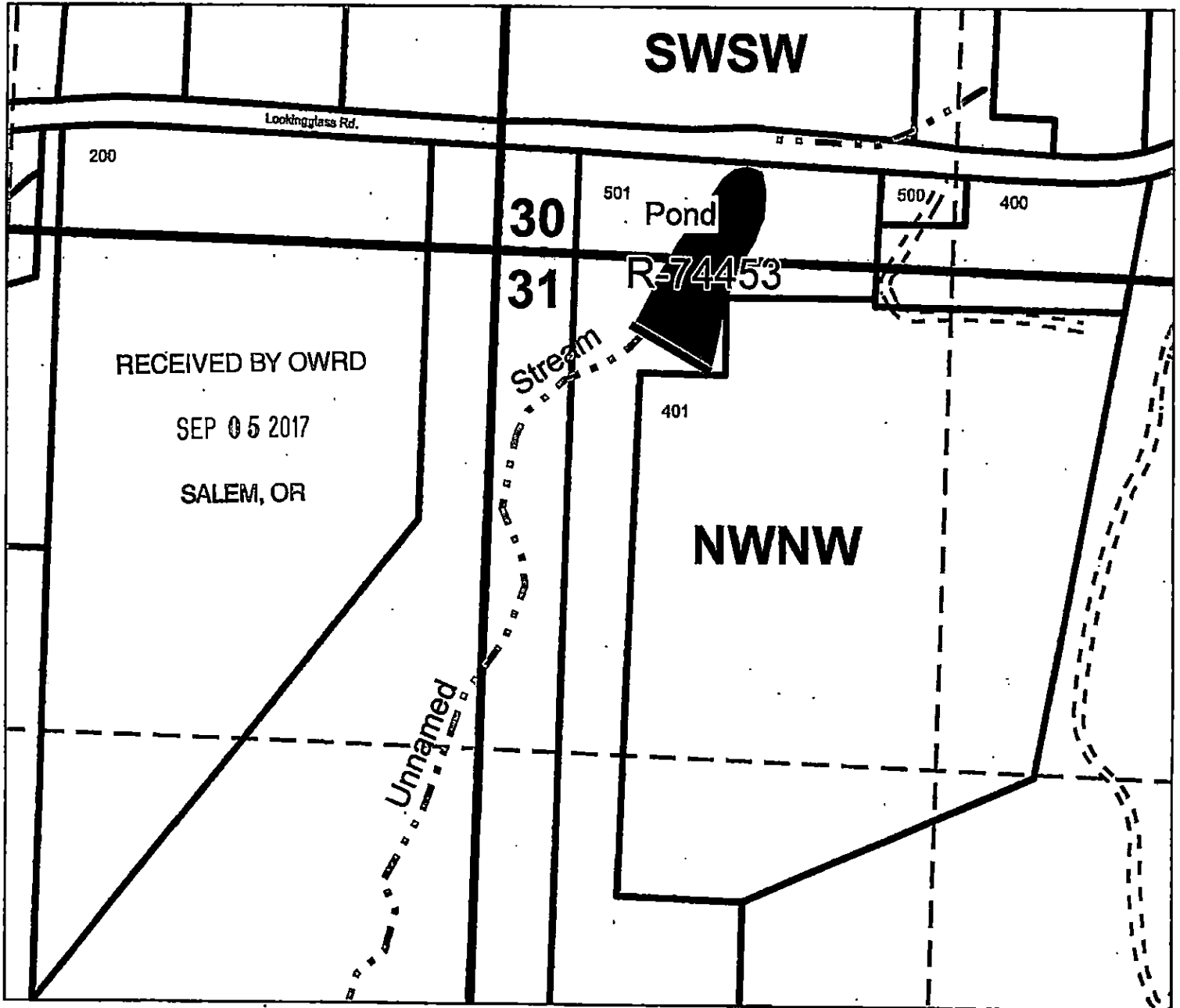


Pond Enlargement Map C#69208
Lookingglass Vineyard
NW 1/4 Sec. 31 and SW 1/4 Sec. 30 T27S R6W WM
Douglas County
Scale 1" = 4800'



Dam location is 250 feet South and 450 feet East from the Northwest Quarter of Section 31.

Map prepared by Laura Duncan, Assistant Watermaster, Douglas County
August 28, 2017

R-88457