

T9S, R28E, W.M.  
GRANT COUNTY, OREGON

RECEIVED

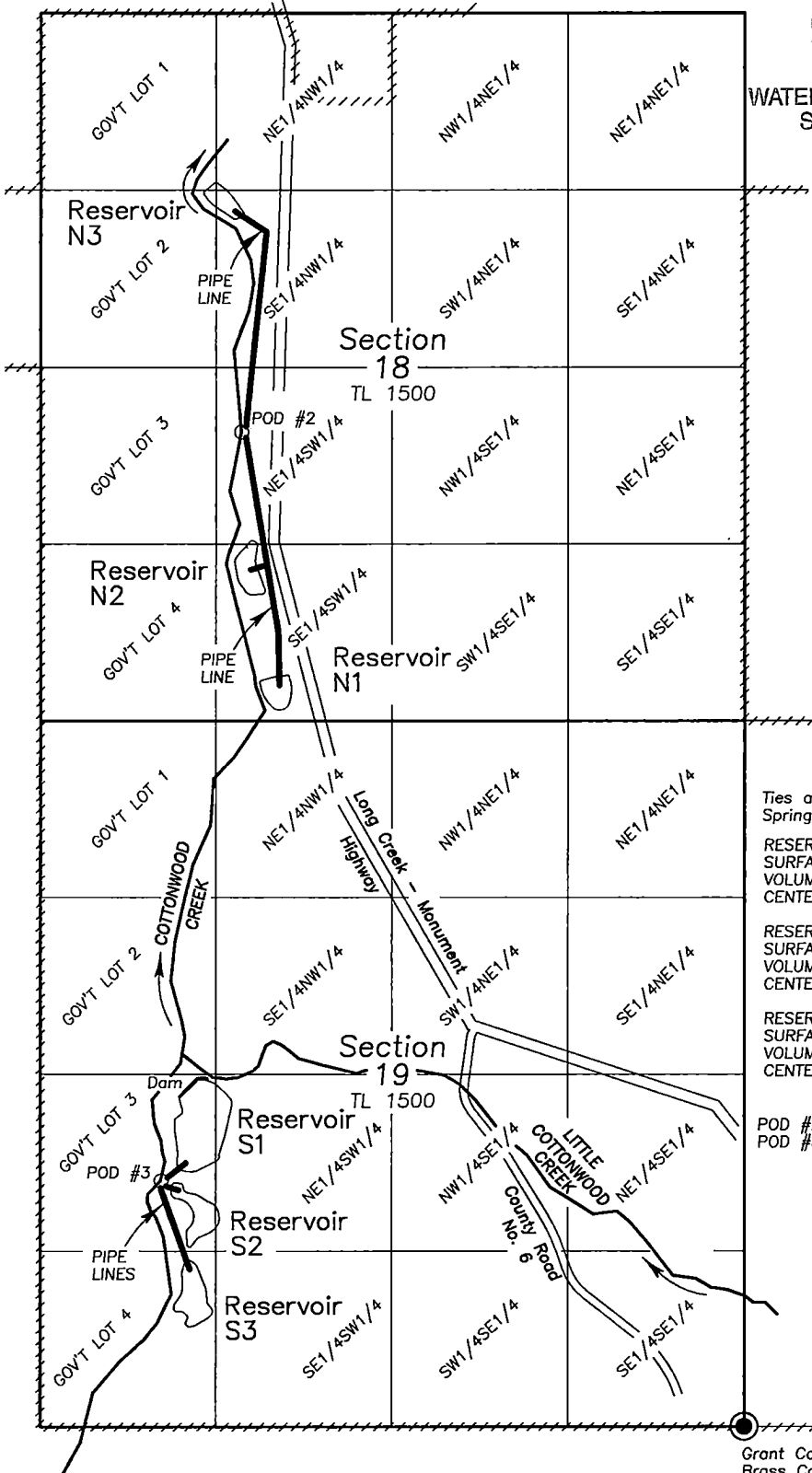
NOV 30 2016

WATER RESOURCES DEPT  
SALEM, OREGON



Scale 1"=1320'

APPLICATION MAP TO  
STORE WATER IN A  
RESERVOIR  
For  
TRIPLE 7 RANCH, LLC  
November 21, 2016



Ties are from the SE corner of Section 19 to the center of the reservoir.  
Springs are located at the center of the reservoirs.

RESERVOIR N1  
SURFACE AREA 1.08 AC.  
VOLUME 12.4 AF  
CENTER IS 5510'N & 3500'W

RESERVOIR S1  
SURFACE AREA 5.00 AC.  
VOLUME 56.6 AF  
DAM IS 2550'N & 4170'W

RESERVOIR N2  
SURFACE AREA 1.30 AC.  
VOLUME 14.0 AF  
CENTER IS 6410'N & 3730'W

RESERVOIR S2  
SURFACE AREA 1.64 AC.  
VOLUME 15.3 AF  
CENTER IS 1580'N & 4050'W

RESERVOIR N3  
SURFACE AREA 0.94 AC.  
VOLUME 9.5 AF  
CENTER IS 9170'N & 3900'W

RESERVOIR S3  
SURFACE AREA 1.90 AC.  
VOLUME 21.7 AF  
CENTER IS 980'N & 4110'W

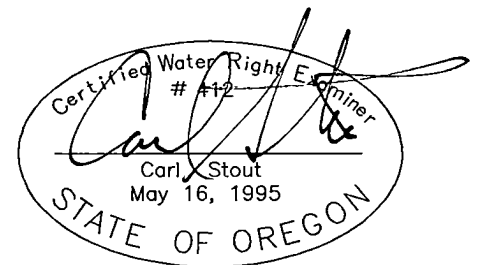
POD #2 is 4810' north and 3820' west of the E1/4 corner of Section 19.  
POD #3 is 1210' ~~north~~ and 4270' west of the E1/4 corner of Section 19.  
**SOUTH**

A portion of Tax Lot  
9-28. TL1500

----- Tax Lot Boundary

Grant County Surveyor  
Brass Cap

NOTE: The preparation of this map  
was for the purpose of identifying  
the location of the proposed water  
right and has no intent to provide  
dimensions or location of property  
ownership lines



R-88719