

084W 12 RC 01000

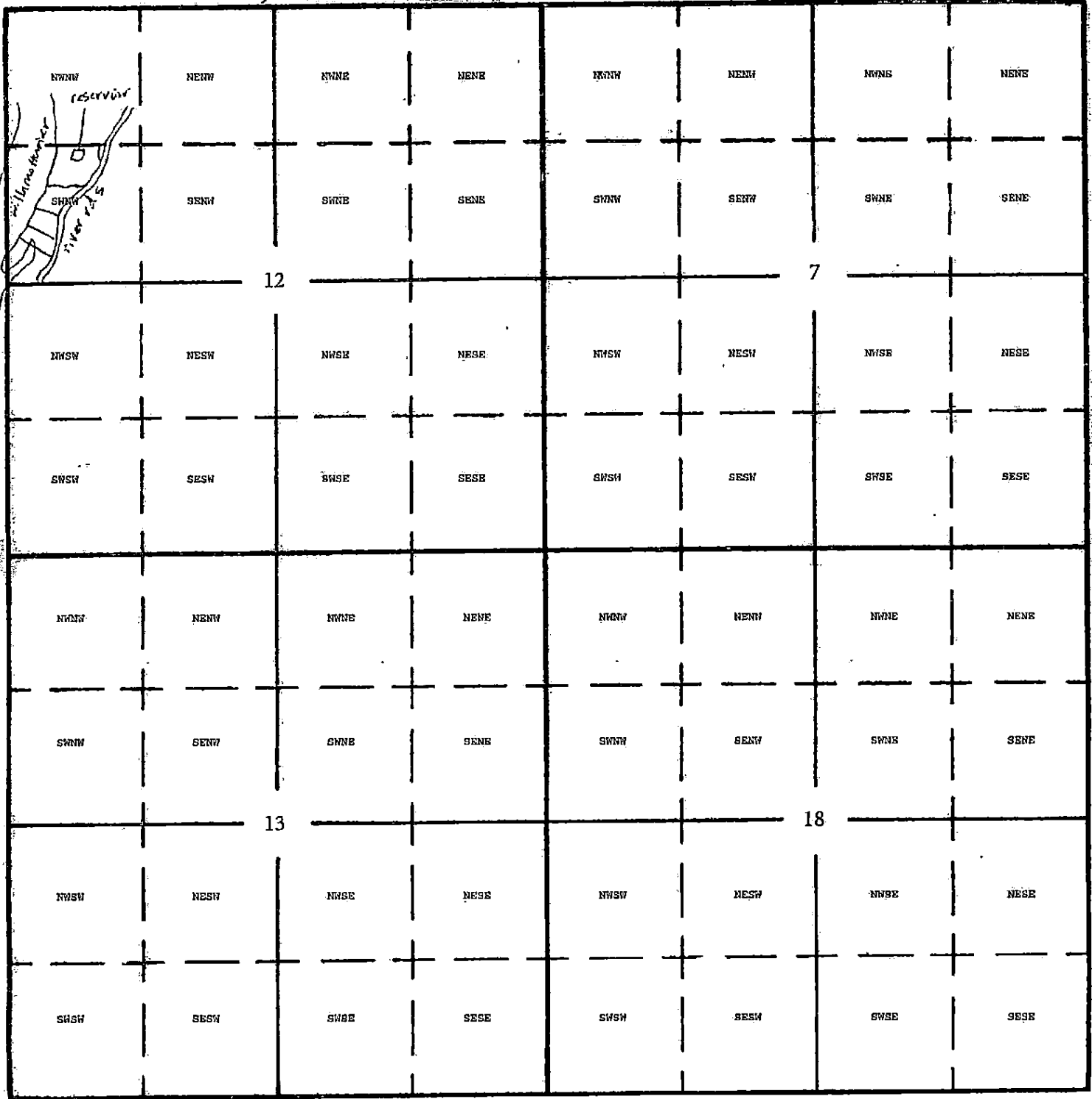
1" = 1320'

Tax Lot: 1000



T8S, R4W

T8S, R3W



Center of reservoir: 115 ft south & 665 ft east from NW corner, SWNW, Sec 12

RECEIVED BY OWRD

RECEIVED

DEC 08 2017

JAN 08 2018

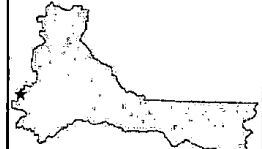
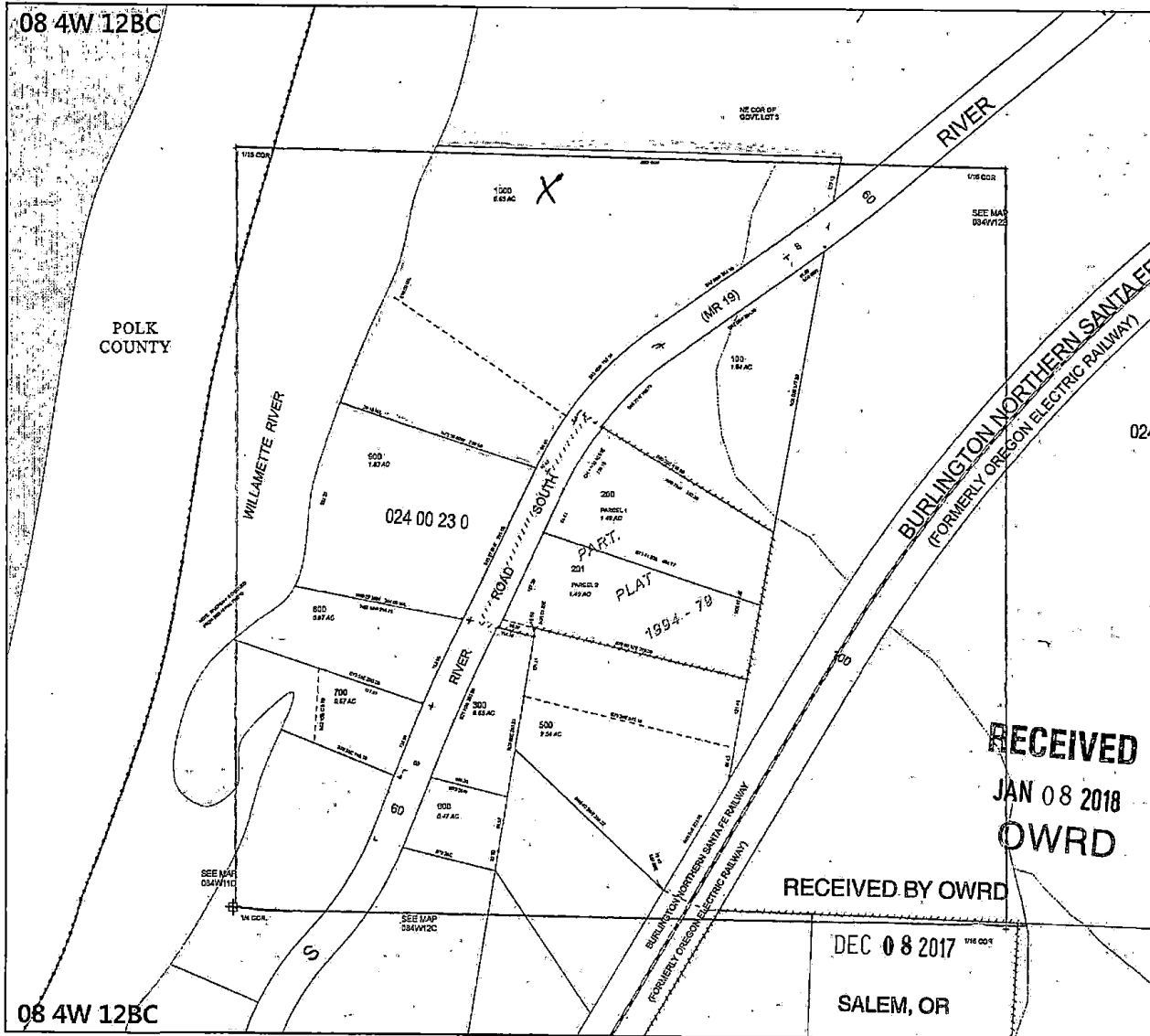
SALEM, OR

OWRD

R-88494

08 4W 12BC

08 4W 12BC



MARION COUNTY, OREGON
 SW1/4 NW1/4 SEC12 T8S R4W W.M.
 SCALE 1" = 100'

LEGEND

LINE TYPES		
Taxlot Boundary	-----	Historical Boundary
Road Right-of-Way	=====	Easement
Railroad Right-of-Way	-----	Railroad Centerline
Private Road ROW	-----	Tourado Line
Subdivision/Plat Boundary	-----	Map Boundary
Waterline - Turf Endry	-----	Waterline - Non Endry

SYMBOL TYPES

• Survey Monument	+ 1/16th Section Cor.
• Road Station	+ 1/4 Section Cor.
⊙ DAC Corner	16, 15 Section Corner
	21, 22

NUMBERS
 Tax Code Number
 000 00 00 0

Acres: All acres listed are Net Acres, excluding any portions of the taxlot with'n public ROWs.

NOTES
 Tick Mark: If a tick mark is indicated on the end of a line, then the dimension goes to the tick mark. This is used when dimensions are set into public right-of-ways.

CANCELLED NUMBERS

000	000	000	000
-----	-----	-----	-----

RECEIVED
 JAN 08 2018
 OWRD

RECEIVED BY OWRD

DEC 08 2017
 SALEM, OR

DISCLAIMER: THIS MAP WAS PREPARED FOR ASSESSMENT PURPOSES ONLY

Assessors Office
Landgraf & Day

FOR ADDITIONAL MAPS VISIT OUR WEBSITE AT www.ca.marion.or.us

PLAT DATE: 7/7/2016

08 4W 12BC

08 4W 12BC