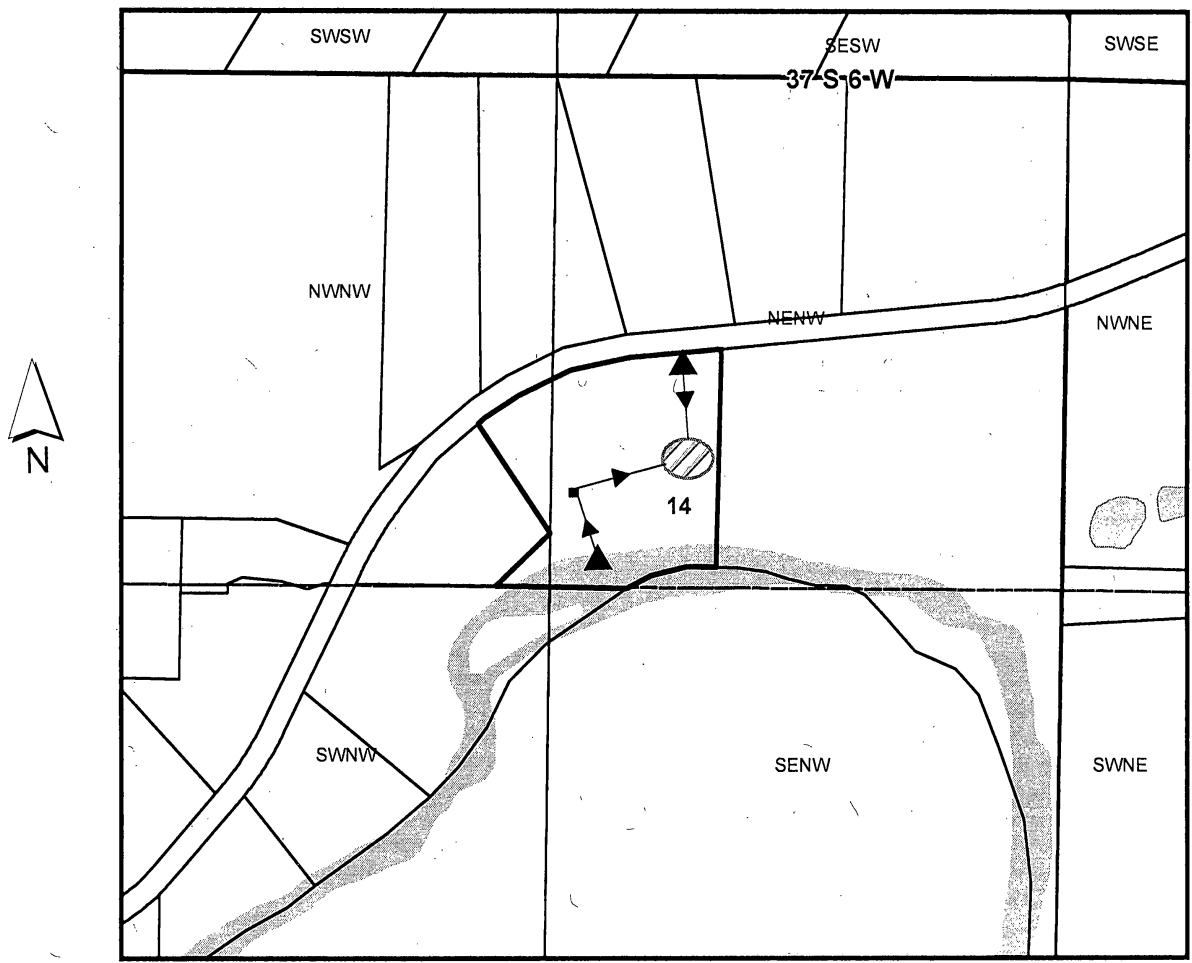


# 37S 06W Section 14 TL 1001 - 969 Fish Hatchery Rd



1 inch = 500 feet

**Alternate Reservoir Application Map for 969 Fish Hatchery Rd**

969 Fish Hatchery TL 1001	POD's from Applegate Rvr & Murphy Ditch
Josephine	Pump House
Sections	Conner Pond
Quarter quarters	

Dam Location for Conner Pond is 1050' South & 945' West of the NE Corner of the NENW Q Section 14

Q-88583 Q. 12.12 Map 2/2