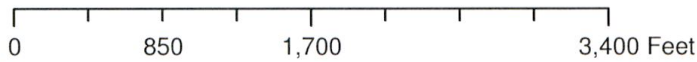
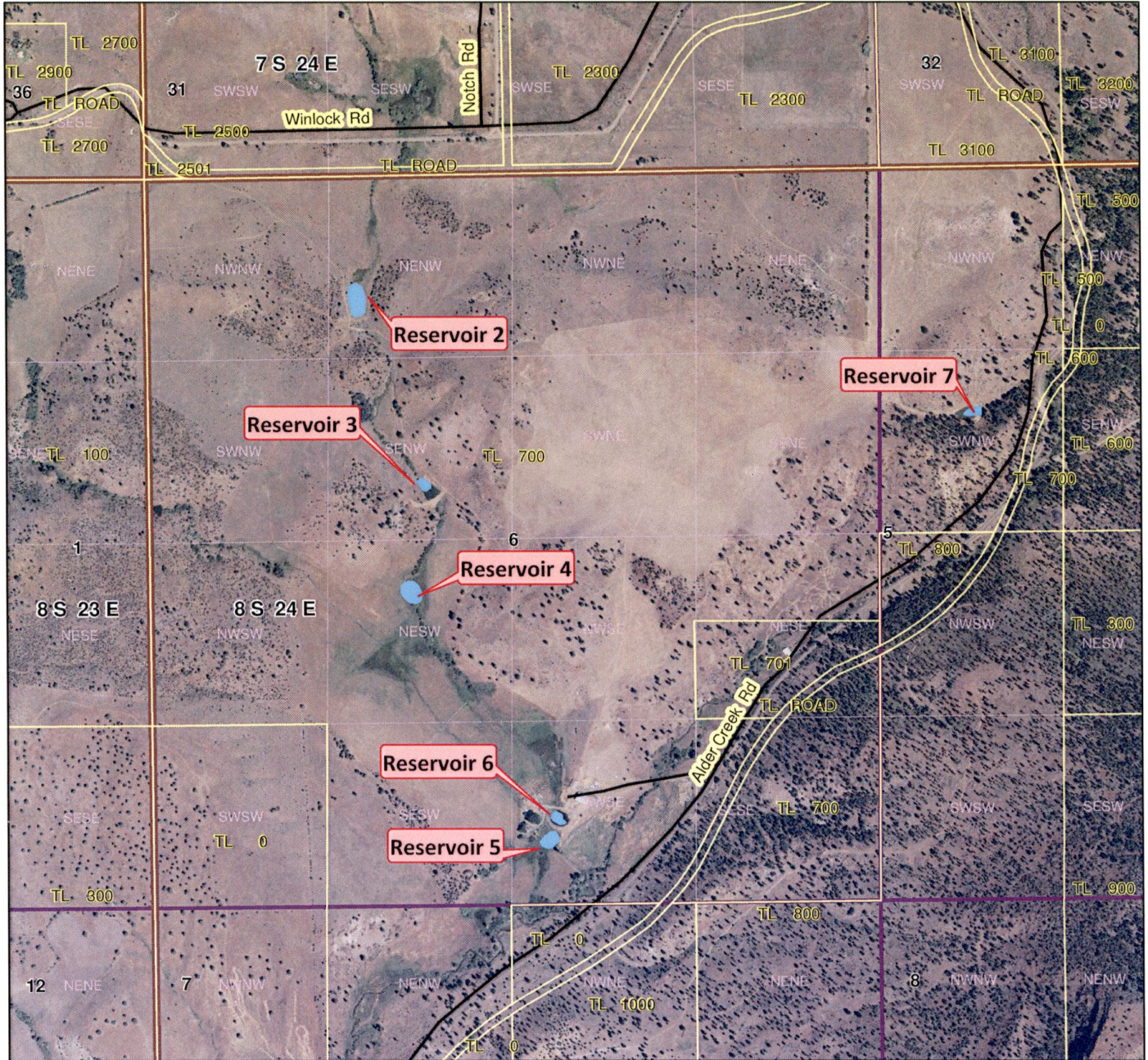


# Kemmer T 8S R 24E Section 5 & 6 Tax Lot 700

RECEIVED

JAN 22 2013

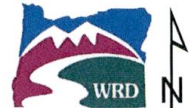
WATER RESOURCES DEPT  
SALEM, OREGON



1 inch = 1,000 feet

- = Reservoir 5: SWSE of Section 6 T8S R24E WM; Center of Reservoir- 455 feet North and 2300 feet West from the SE corner of Section 6
- = Reservoir 6: SWSE of Section 6 T8S R24E WM; Center of Reservoir- 610 feet North and 2250 feet West from the SE corner of Section 6
- = Reservoir 7: SWNW of Section 5 T8S R24E WM; Center of Reservoir- 1710 feet South and 655 feet East from the NE corner of Section 6

This product is for informational purposes and may not have been prepared for, or be suitable for legal, engineering, or surveying purposes. Users of this information should review or consult the primary data and information sources to ascertain the usability of the information.



App R-87284