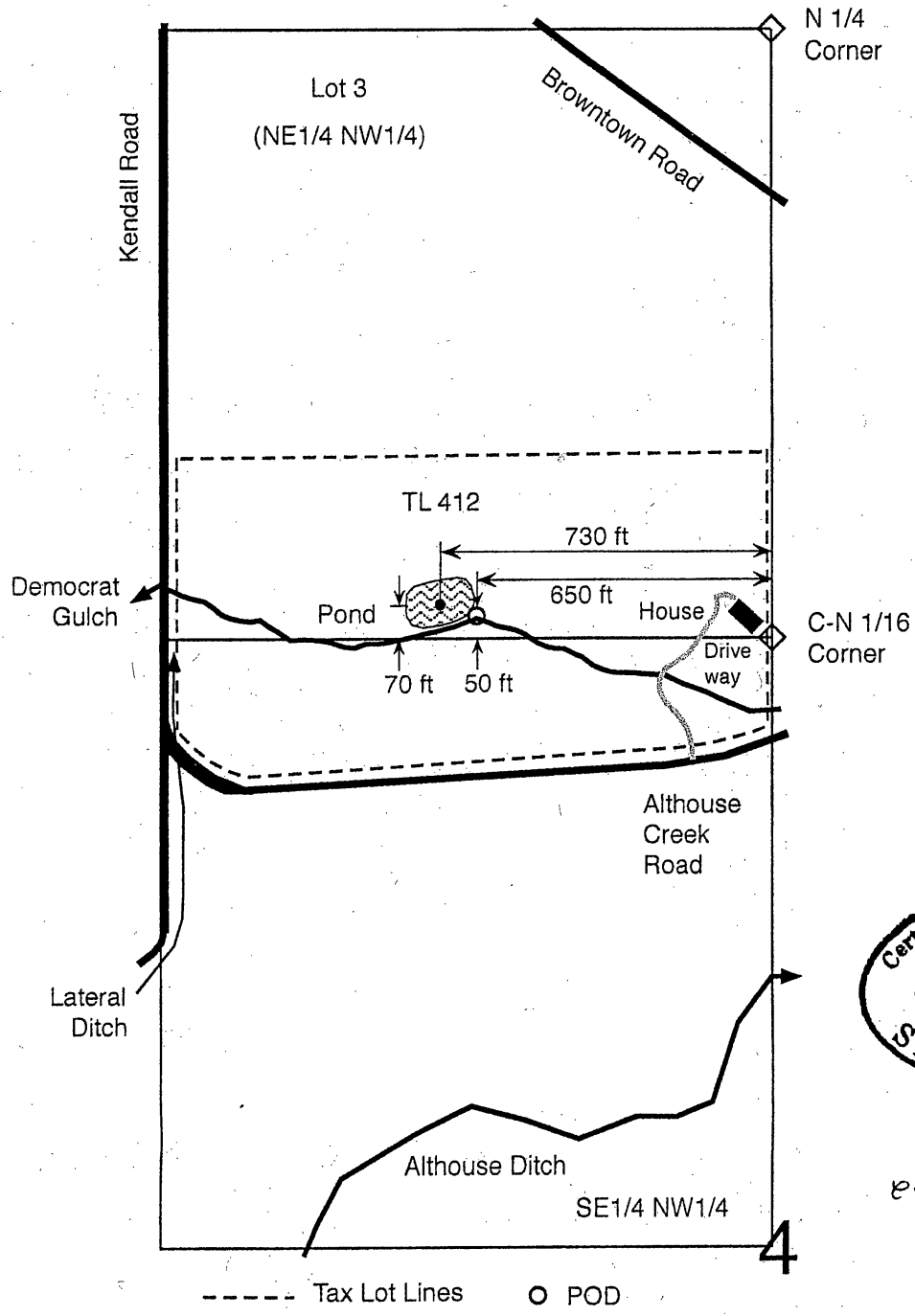
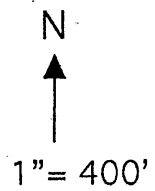
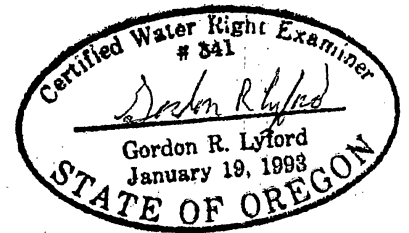


Alternate Reservoir Application Map
 T40S, R7W, WM, JOSEPHINE COUNTY
 Portions of Section 4
 March 14, 2018



RECEIVED
 MAY 29 2018
 OWRD



3-14-2018
 exp 12-31-2018

SUPERSEDING

Alternate off channel reservoir (Pond) with a 0.3 acre surface area and a 1.5 acre-foot volume.

This map was drawn by Gordon R. Lyford for Gabriel and Kim Young to support their application for an alternate reservoir. Gabriel and Kim Young own tax lot 412.

This map was prepared for the purpose of identifying the location of water rights only and is not intended to provide legal dimensions or the location of property ownership lines.