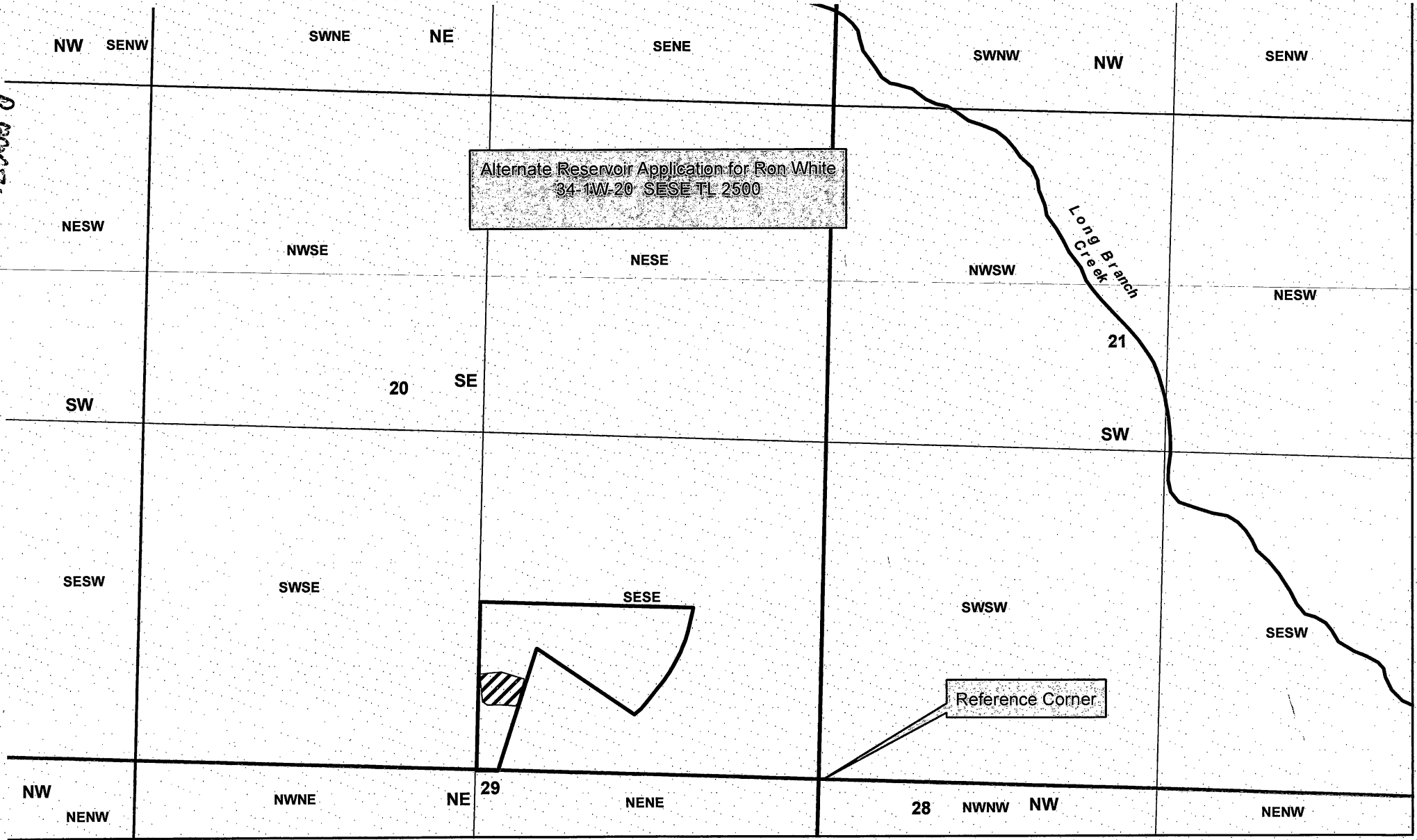




17-2001-71



Alternate Reservoir Application for Ron White  
 34-1W-20 SESE TL 2500

Reference Corner

**Legend**

-  TL 2500
-  Stacey Reservoir

Stacey Reservoir:  
 1246 ft West and 306 ft North  
 from SE Corner of Section 20



1 inch = 500 feet



JACKSON COUNTY

**WATERMASTER**  
 WITH DIRECTION FROM RON WHITE

This map is based on a digital database compiled by Jackson County from a variety of sources. Jackson County cannot accept responsibility for errors, omissions, or positional accuracy. There are no warranties, expressed or implied.

RECEIVED

SEP 21 2018

OWRD