

CERTIFIED
MILLAS CHIMENSE
JUNE 15, 2016
STATE OF OREGON

FID Upper Reservoir



0 500 1,000 Feet
1 inch = 400 feet

Legend

- PLSS corner
- ▲ Weir
- Pipelines/canals
- ▭ Full pool outline
- ▭ Tax parcels
- ▭ Section line
- ▭ Qtr-qtr sections

WPN Watershed Professionals Network, LLC

Map date: 5/7/2016

T02N-R09E S 21

T02N-R09E S 28

02N09E00101

02N09E00100

02N09E00201

02N09E01100

N 32° 47' 0" W
2746'

T02N-R09E S 22

T02N-R09E S 23

T02N-R09E S 27

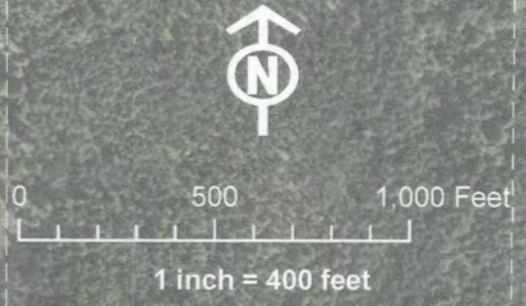
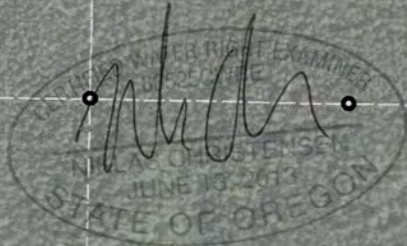
T02N-R09E S 26

Source: Esri, DigitalGlobe, GeoEye, Earthstar Geographics, CNES/Airbus DS, USDA, USGS, AEX, Getmapping, Aerogrid, IGN, IGP, swisstopo, and the GIS User Community

RECEIVED
MAY 23 2016
OWRD

R-88231

Rainy & Gate Creek Points of Diversion



Rainy Lake

76230

Certificates:
74302
75809
76230
85975

Legend

- PLSS corner
- Points of diversion
- - - Distance (EW, NS) to PLSS
- Streams
- Pipelines/canals
- ▭ Tax parcels
- ▭ Section line
- ▭ Qtr-qtr sections



Map date: 5/15/2016

1614 feet

02N08E00300

02N09E00200

T02N-R08E S 25

1070 feet

T02N-R08E S 36

2493 feet

T02N-R09E S 30

T02N-R09E S 31

1726 feet

Stanley Smith Pipeline

Rainy Creek Ditch

Rainy Creek

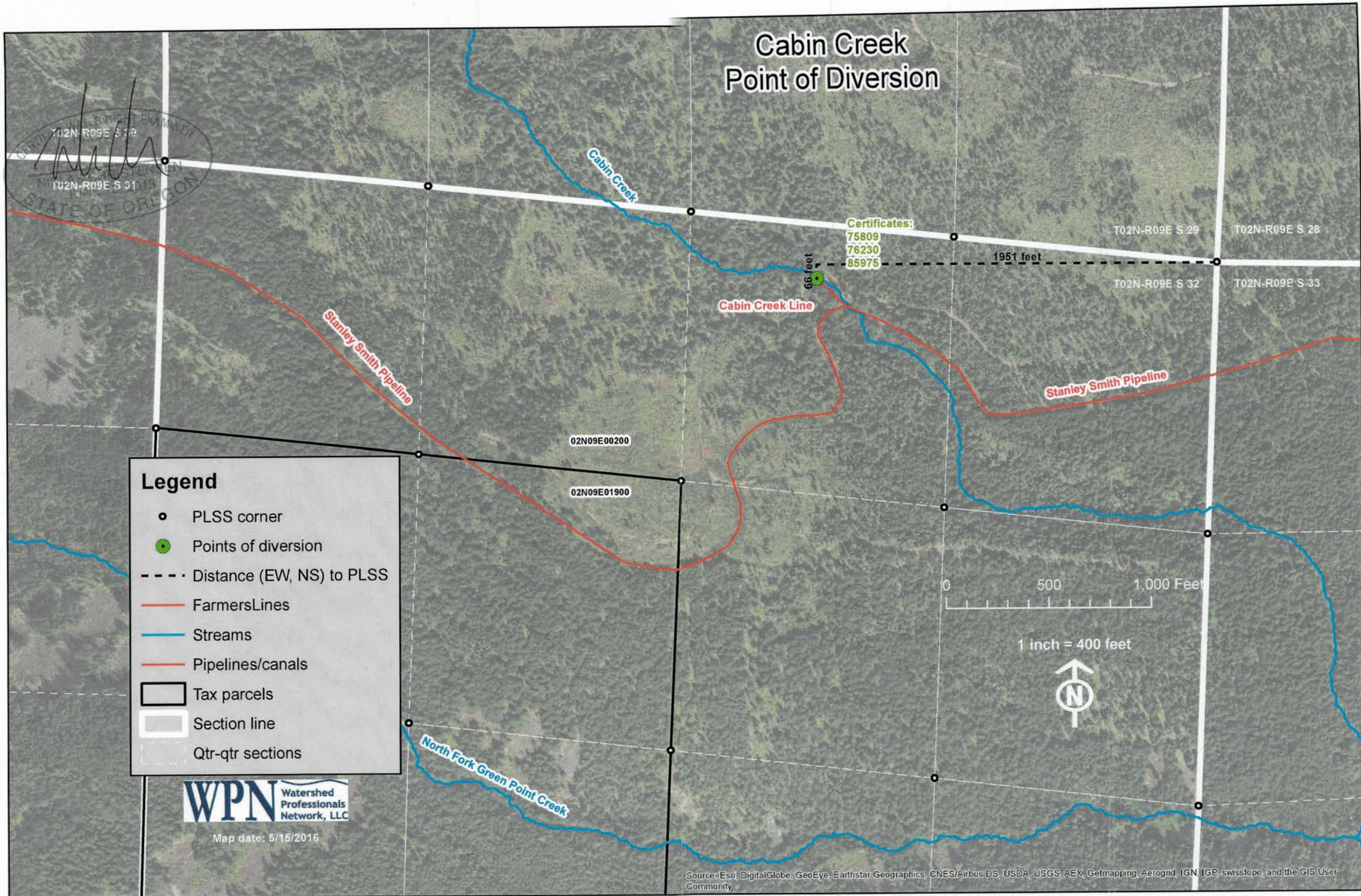
Gate Creek

Source: Esri, DigitalGlobe, GeoEye, Earthstar Geographics, CNES/Airbus DS, USDA, USGS, AEX, Getmapping, Aerogrid, IGN, IGP, swisstopo, and the GIS User Community

RECEIVED
MAY 23 2016
OWRD

R-88231

Cabin Creek Point of Diversion



7112N-R09E S 31
T02N-R09E S 31
STATE OF OREGON

WPN Watershed Professionals Network, LLC

RECEIVED
MAY 23 2016
OWRD

R-88231