

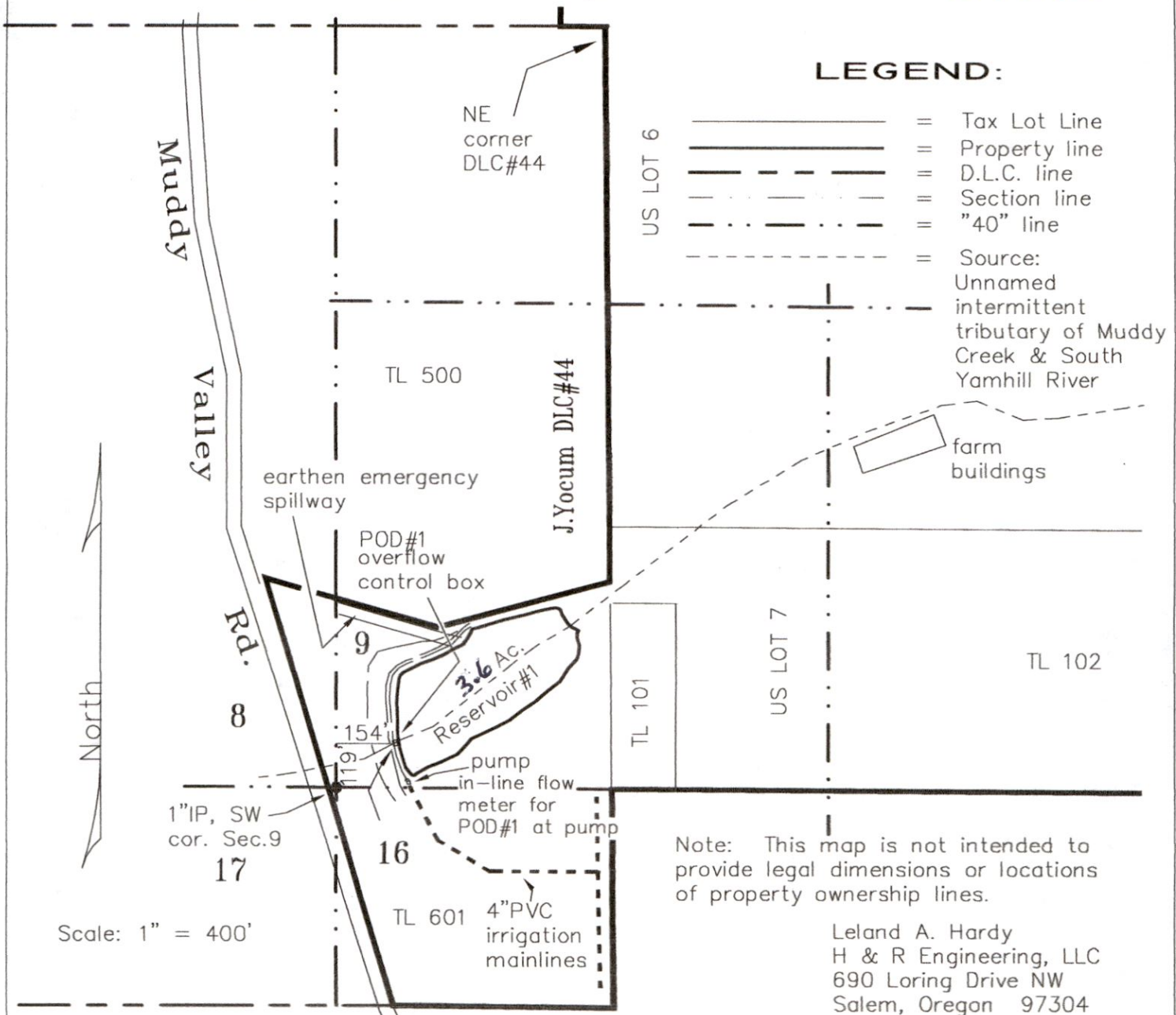
RECEIVED

OCT 24 2017

T. 5 S., R.5 W., W.M.

Location: SW 1/4 of the SW 1/4 of Section 9, NW 1/4 of the NW of Section 16,
T. 5 S., R.5 W., W.M., Yamhill County, OR

OWRD



Dam & Reservoir #1
CLAIM OF BENEFICIAL USE MAP

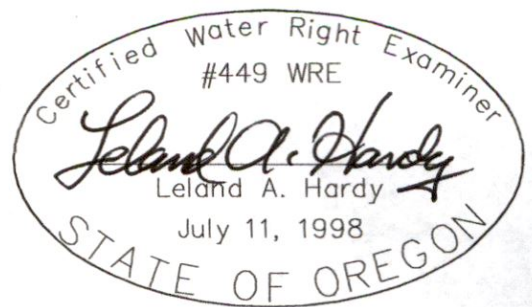
UNDER

Application No. R-84127 Permit No. R-12823

IN NAME OF

MOMTAZI FAMILY, LLC

Surveyed July, 2015



R-88470