

RECEIVED

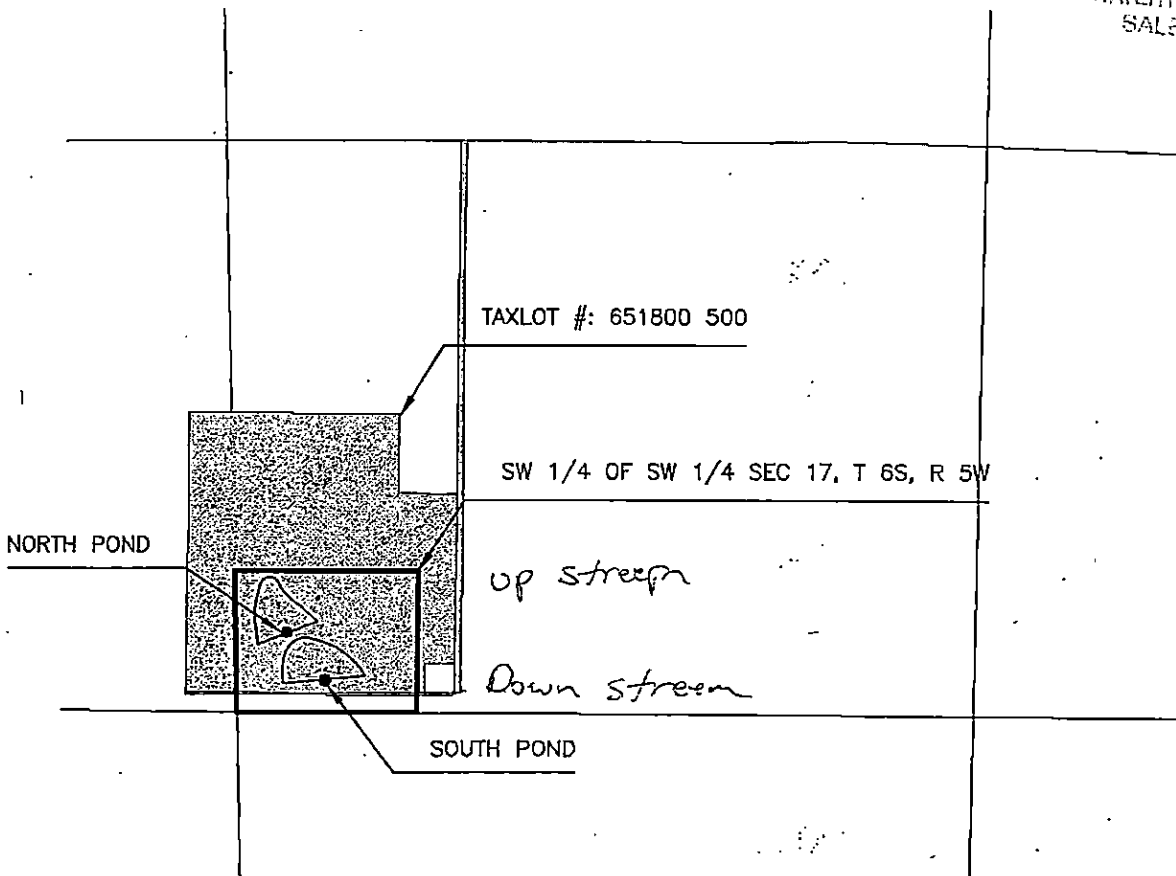
JUL 24 2019

OWRD

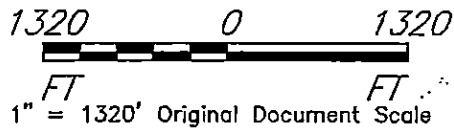
RECEIVED

APR 20 2006

WATER RESOURCES DEPT.
SALEM, OREGON



MAXSON - DUCK PONDS



SOUTH POND is 660 ft east and 260 ft north of SW corner of section 17, T 6S, R5W, WM
 NORTH POND is 370 ft east and 590 ft north of SW corner of section 17, T 6S, R5W, WM

Designed <u>CMS</u>	DATE <u>4/06</u>	File Name	MAXSON DUCK PONDS - LOCATION MAP POLK COUNTY, OREGON U.S.D.A. NATURAL RESOURCES CONSERVATION SERVICE
Drawn _____		Drawing No.	
Checked _____		SHEET 1 OF 1	
Approved _____			

appno R 86577 Permit no R-14297

R-88722