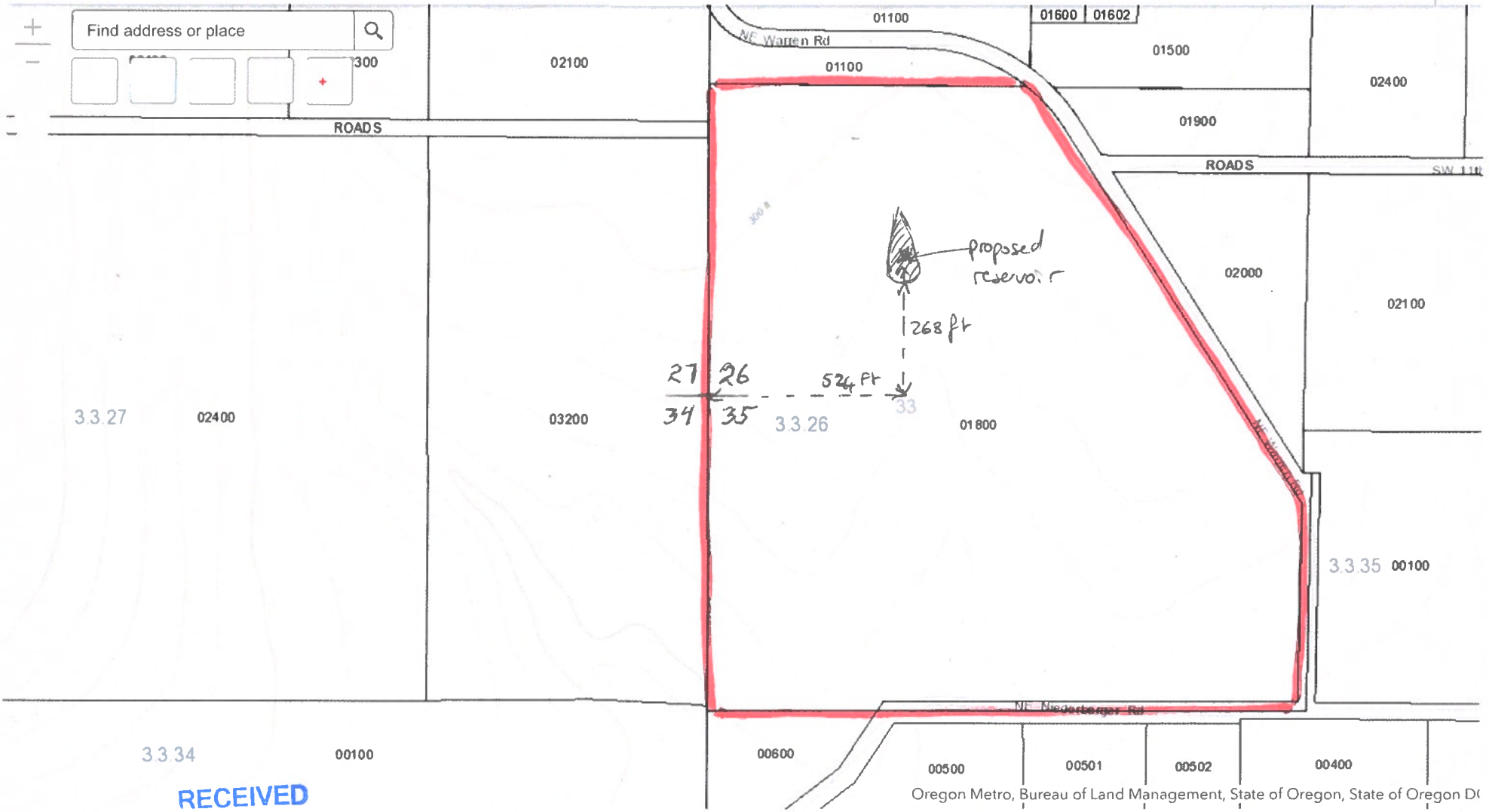


North ↑



RECEIVED
 MAY 23 2019
 OWRD

RECEIVED
 APR 19 2019
 OWRD

RECEIVED
 MAY 10 2019
 OWRD

DUNDEE COVE PROPERTY
 7600 NW WARREN RD
 DUNDEE OR 97115

T3S R3W 26 SW 1/4 of SW 1/4 01800

Center of Reservoir is 524 feet east and 268 feet north



Imagery ©2019 Google, Map data ©2019 Google 200 ft

↑
Scale

DUNDEE COVE PROPERTY

76 00 NW WARREN Rd

DUNDEE OR 97115

T3S R3W 26 SW ¼ of SW ¼ Taxlot 01800

Center of Reservoir to be 524 ft east and
268 ft North of southwest corner of section 26

RECEIVED

MAY 10 2019

OWRD

RECEIVED

APR 19 2019

OWRD

RECEIVED

MAY 23 2019

OWRD

R-88773

<https://www.google.com/maps/@45.2741781,-123.0307135,619m/data=!3m1!1e3>