

THIS MAP IS FOR ASSESSMENT AND TAXATION PURPOSES ONLY

SEC. 10 T.7S. R.4W. W.M.
Polk County
1" = 400'

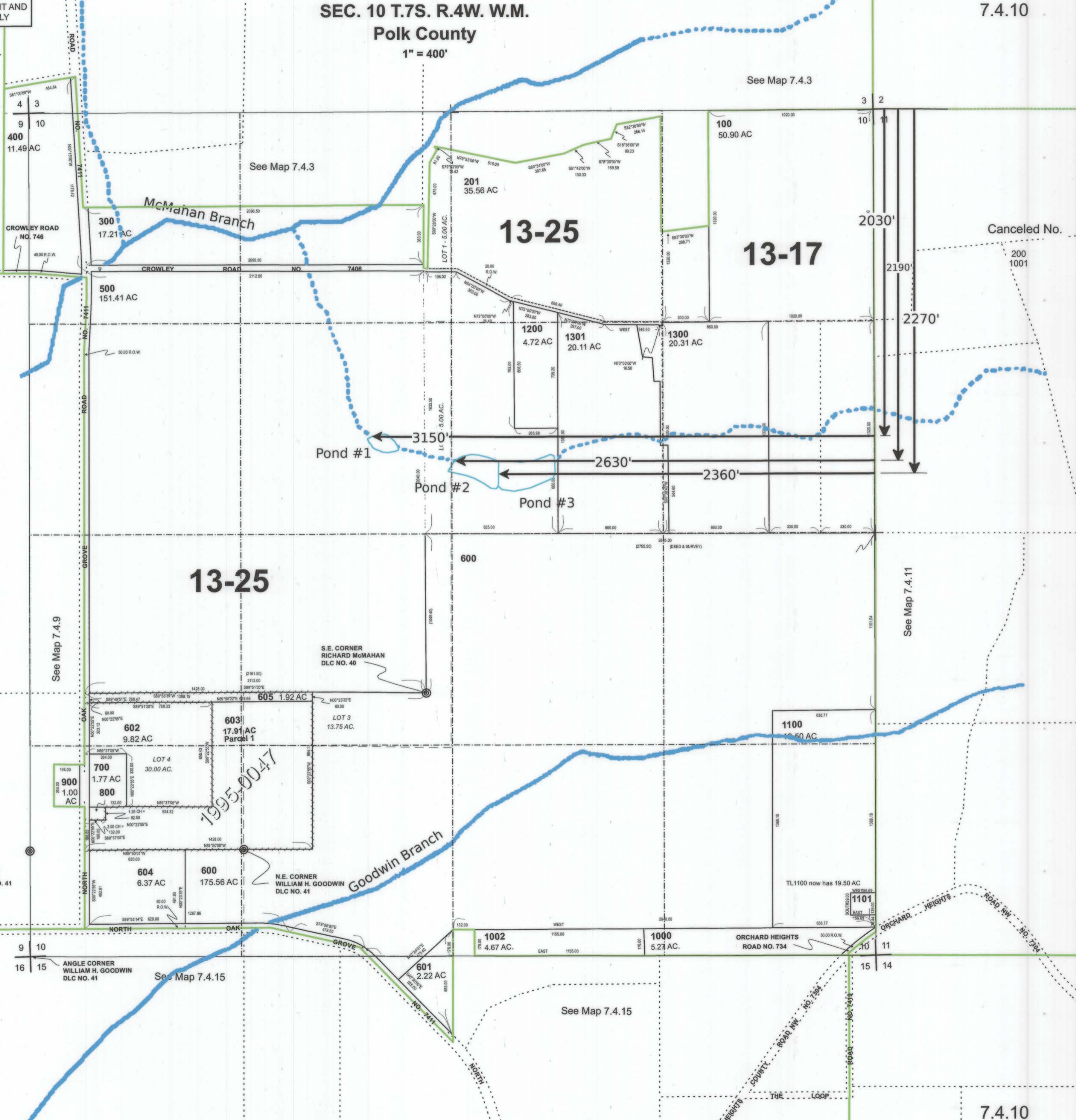
7.4.10



See Map 7.4.4

See Map 7.4.3

See Map 7.4.3



See Map 7.4.9

See Map 7.4.11

See Map 7.4.15

See Map 7.4.15

2/14/2019

7.4.10

RECEIVED
FEB 05 2020
OWRD