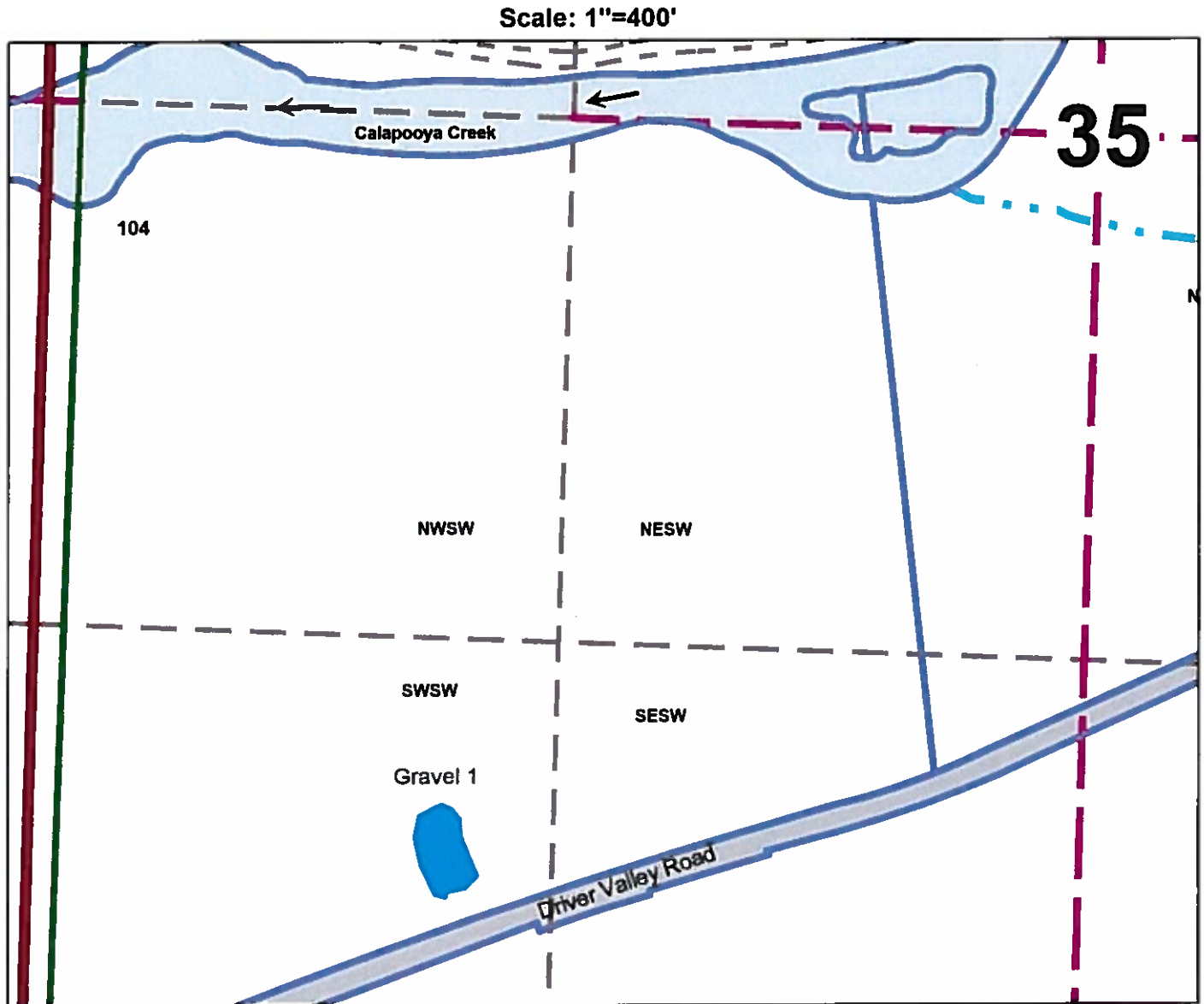




**Application Map
Baxter
Douglas County
T.24S. R.5W. Section 35**

**RECEIVED
JUN 01 2020
OWRD**



Reservoir(Gravel1) is located 1871 ft South and 1598 ft West from the Center of Section 35

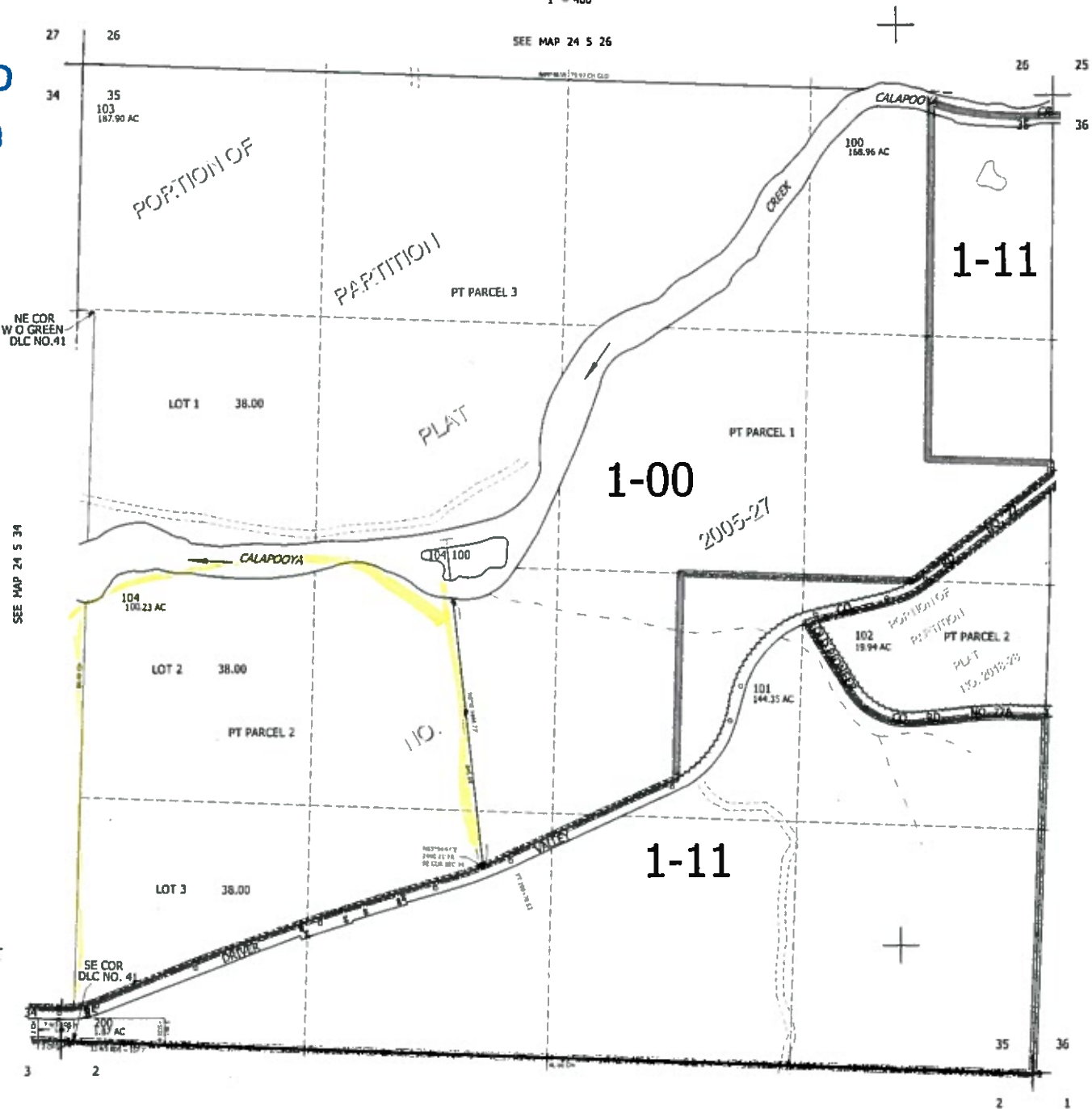
THIS MAP WAS PREPARED FOR ASSESSMENT PURPOSE ONLY.

SEC.35 T.24S. R.5W. W.M.
DOUGLAS COUNTY
1" = 400'

REVISED ON
10-18-18

24 5 35

RECEIVED
JUN 01 2020
OWRD



27

26

SEE MAP 24 5 26

25

25

34

35

103
187.90 AC

CALAPOOY

100
168.96 AC

36

36

CANCELLED NOS
105

1-11

PT PARCEL 3

LOT 1 38.00

PLAT

PT PARCEL 1

1-00

2005-27

SEE MAP 24 5 34

104
100.23 AC

LOT 2 38.00

PT PARCEL 2

110

102
19.94 AC

PT PARCEL 2

PLAT
1-11

SEE MAP 24 5 36

LOT 3 38.00

1-11

+

SE COR
DLC NO. 41

+

200
1.19 AC

35

36

656,000

3

2

2

1

SEE MAP 25 5 2

191,000

24 5 35