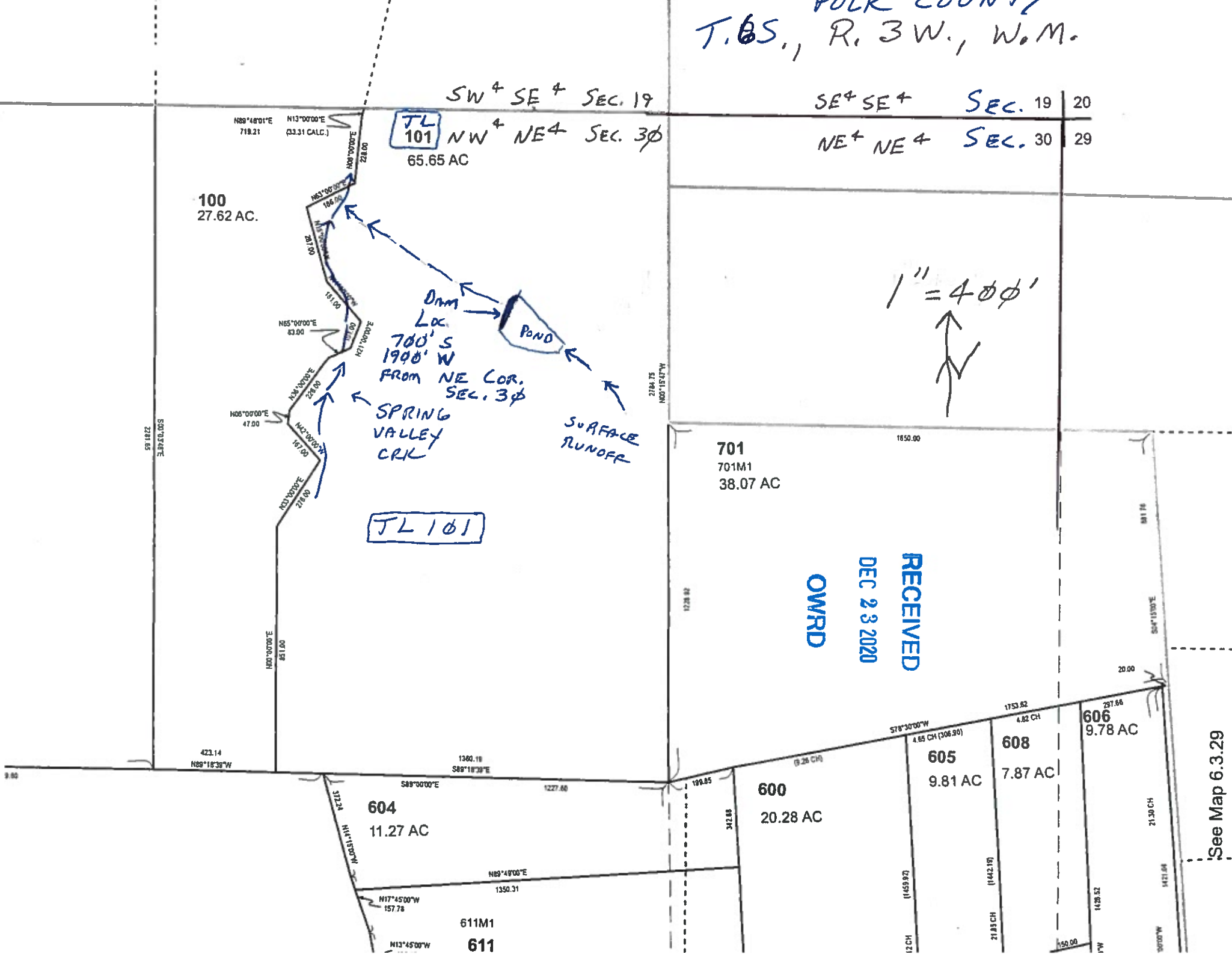


POLK COUNTY  
T. 65., R. 3 W., W. M.



SW + SE + SEC. 19

SE + SE + SEC. 19 | 20

TL 101 NW + NE + SEC. 30  
65.65 AC

NE + NE + SEC. 30 | 29

100  
27.62 AC.

DAM  
LOC.  
700' S  
1900' W  
FROM NE COR.  
SEC. 30

POND

SPRING  
VALLEY  
CRK

SURFACE  
RUNOFF

TL 101

1" = 400'

701  
701M1  
38.07 AC

RECEIVED  
DEC 23 2020  
OWRD

423.14  
N89°18'33"W

1360.18  
S89°18'33"E

604  
11.27 AC

600  
20.28 AC

605  
9.81 AC

608  
7.87 AC

606  
9.78 AC

611M1  
611

See Map 6.3.29