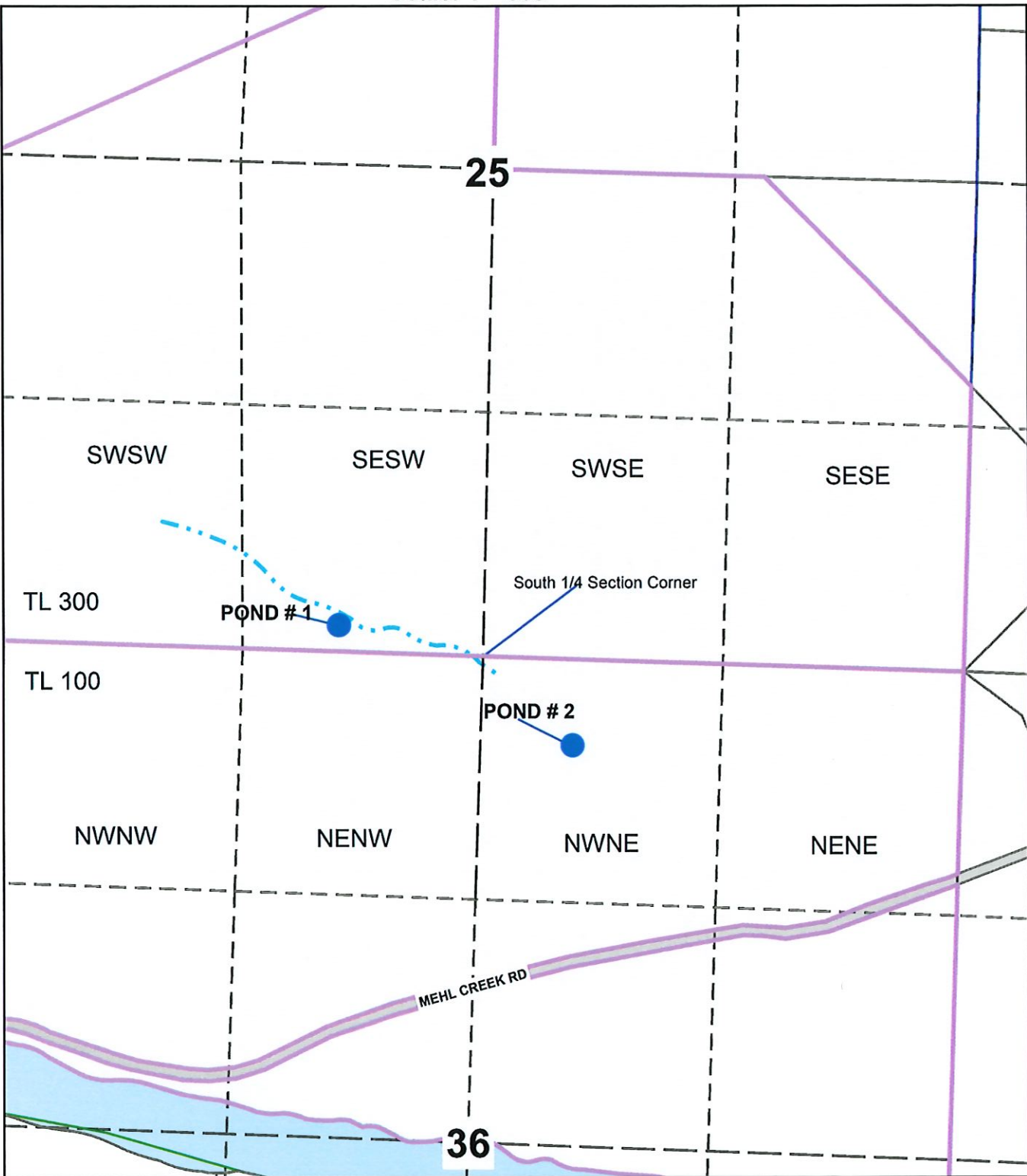
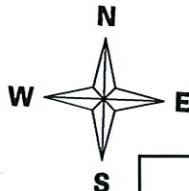


Reservoir Application
TAJS Enterprises
T.22S R.8W Section 25 & 36
Douglas County
Scale: 1"=800'

RECEIVED
MAR 22 2021
OWRD



Pond #1 is 142 ft North and 800 ft West from the South 1/4 Section Corner of 25

Pond #2 is 475 ft South and 795 ft East from the South 1/4 Section Corner of 25

The purpose of this map is to identify
the location of a water right.
Not intended to show property ownership.

