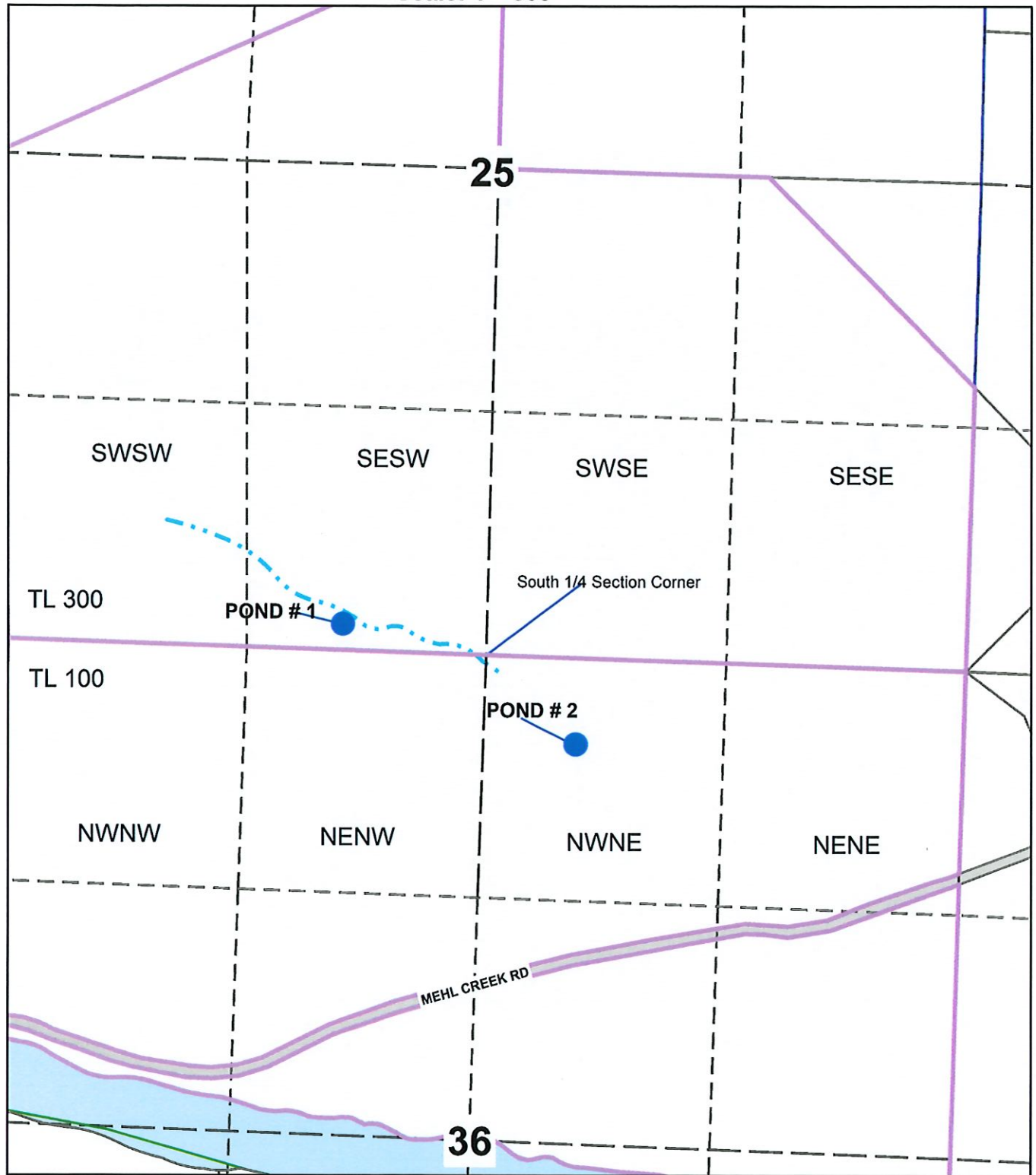
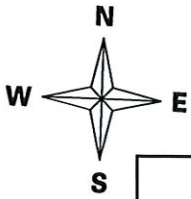


Reservoir Application  
TAJS Enterprises  
T.22S R.8W Section 25 & 36  
Douglas County  
Scale: 1"=800'



Pond #1 is 142 ft North and 800 ft West from the South 1/4 Section Corner of 25

Pond #2 is 475 ft South and 795 ft East from the South 1/4 Section Corner of 25

The purpose of this map is to identify  
the location of a water right.  
Not intended to show property ownership.

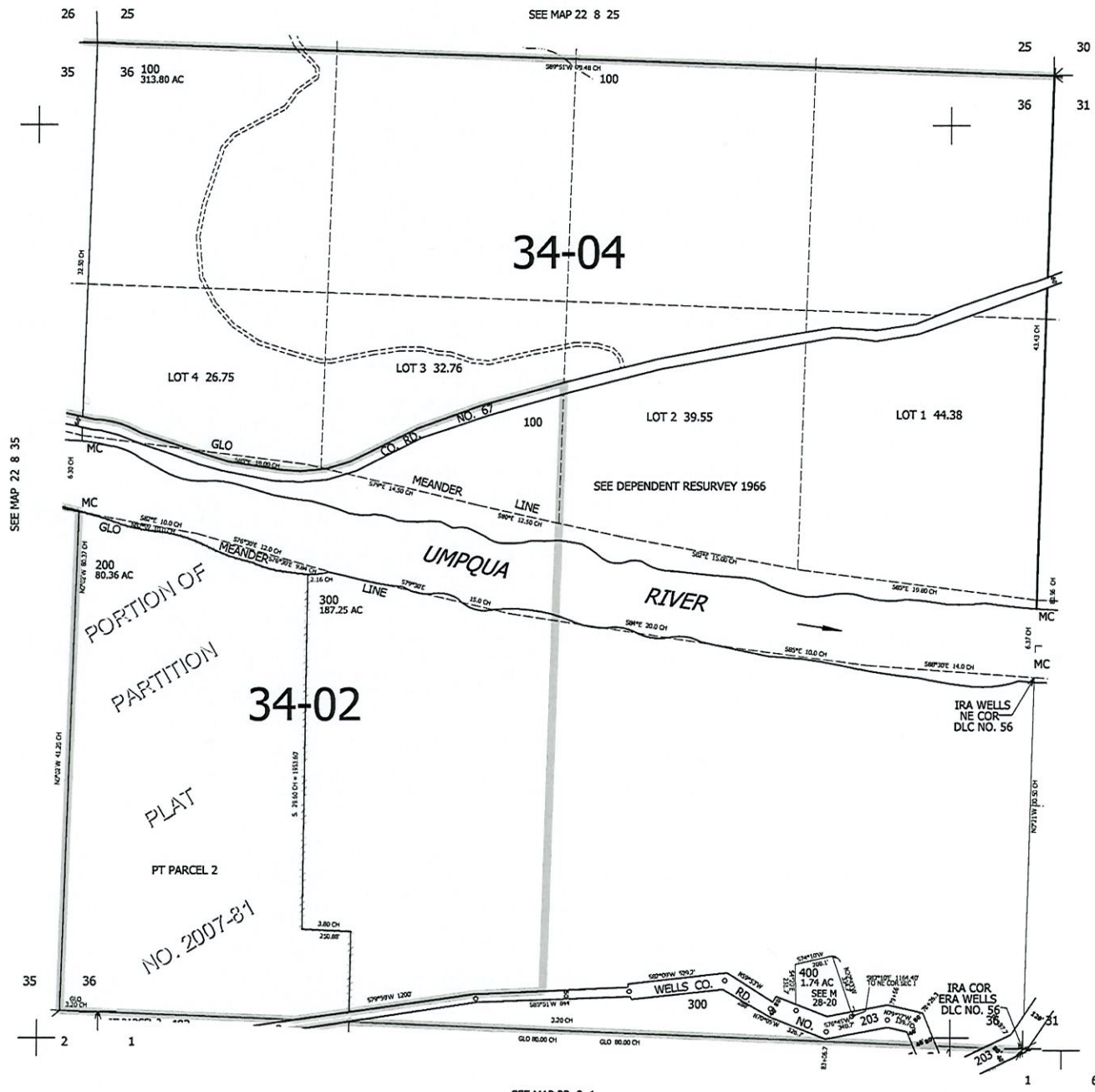
THIS MAP WAS PREPARED FOR ASSESSMENT PURPOSE ONLY.

SEC.36 T.22S. R.8W. W.M.  
DOUGLAS COUNTY  
1"=400'

REVISED ON  
5-27-09

22 8 36

RECEIVED  
MAR 22 2021  
OWRD



CANCELLED NO'S

SEE MAP 22 7 31

722,000

SEE MAP 23 8 1

4,104,000

22 8 36