

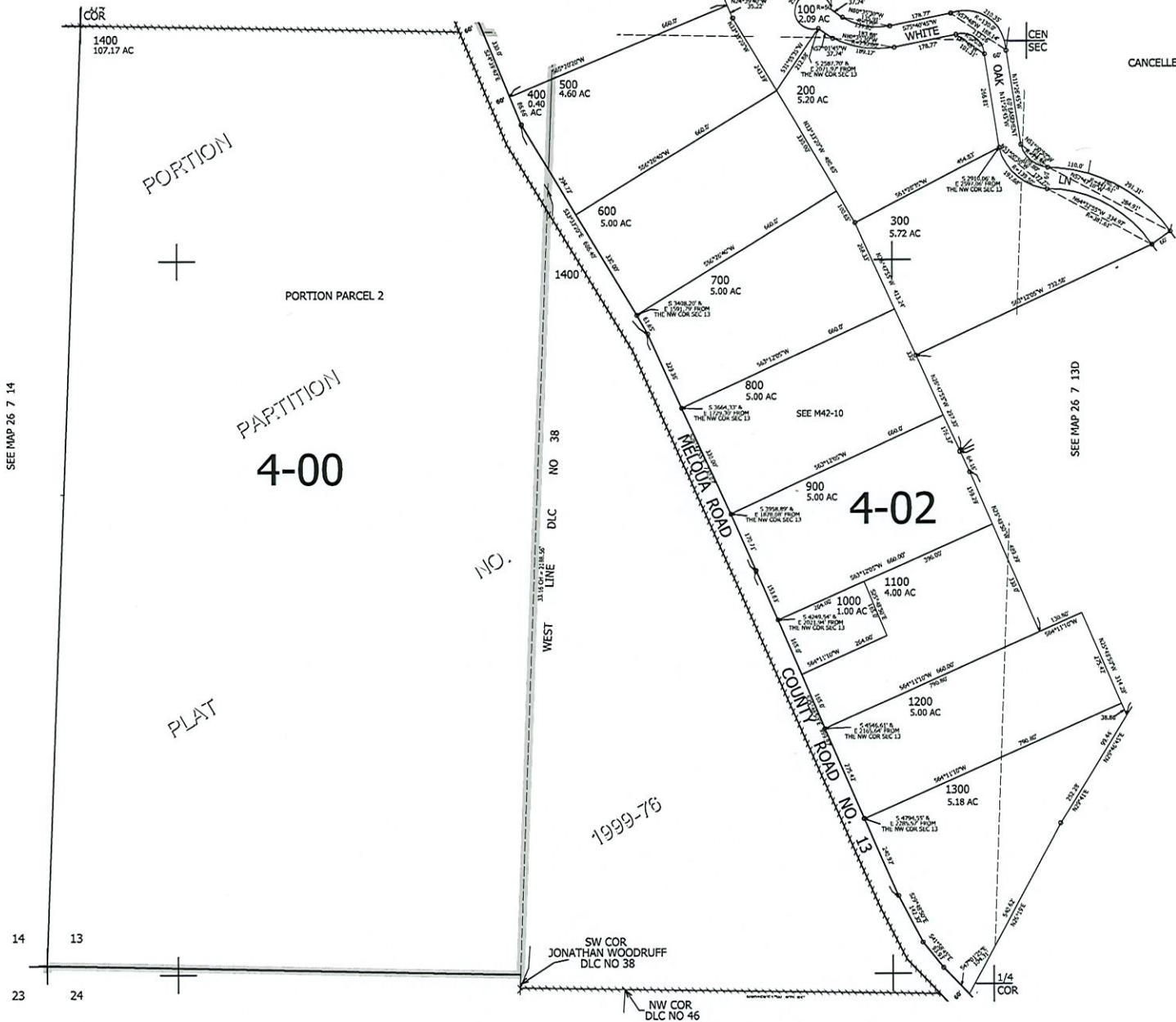
THIS MAP WAS PREPARED FOR ASSESSMENT PURPOSE ONLY.

SW1/4 SEC.13 T.26S. R.7W. W.M.
DOUGLAS COUNTY
1" = 200'

REVISED ON
9-23-99

26 7 13C

SEE MAP 26 7 13B



CANCELLED NO'S

SEE MAP 26 7 14

SEE MAP 26 7 13D

SEE MAP 26 7 24B

4,129,000

610,000

OWRD

RECEIVED
MAR 12 2021

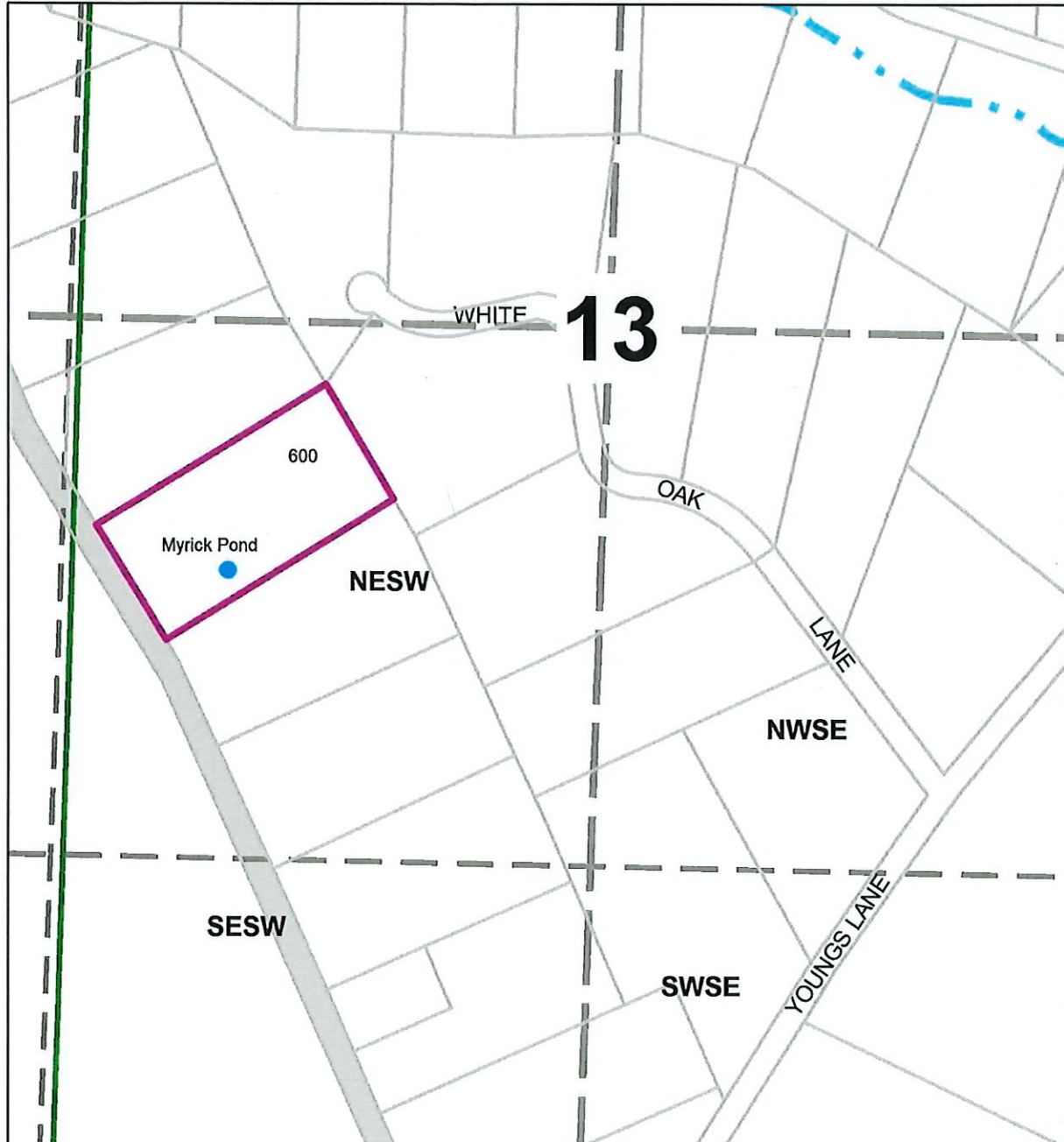
26 7 13C



**Reservoir Application
Myrick
T.26S R.7W Section 13
Douglas County**

**RECEIVED
MAR 12 2021
OWRD**

Scale: 1"=400'



Myrick Pond is 602 ft South and 955 ft West from the center of Section 13

The purpose of this map is to identify
the location of a water right.
Not intended to show property ownership.

THIS MAP WAS PREPARED FOR ASSESSMENT PURPOSE ONLY.

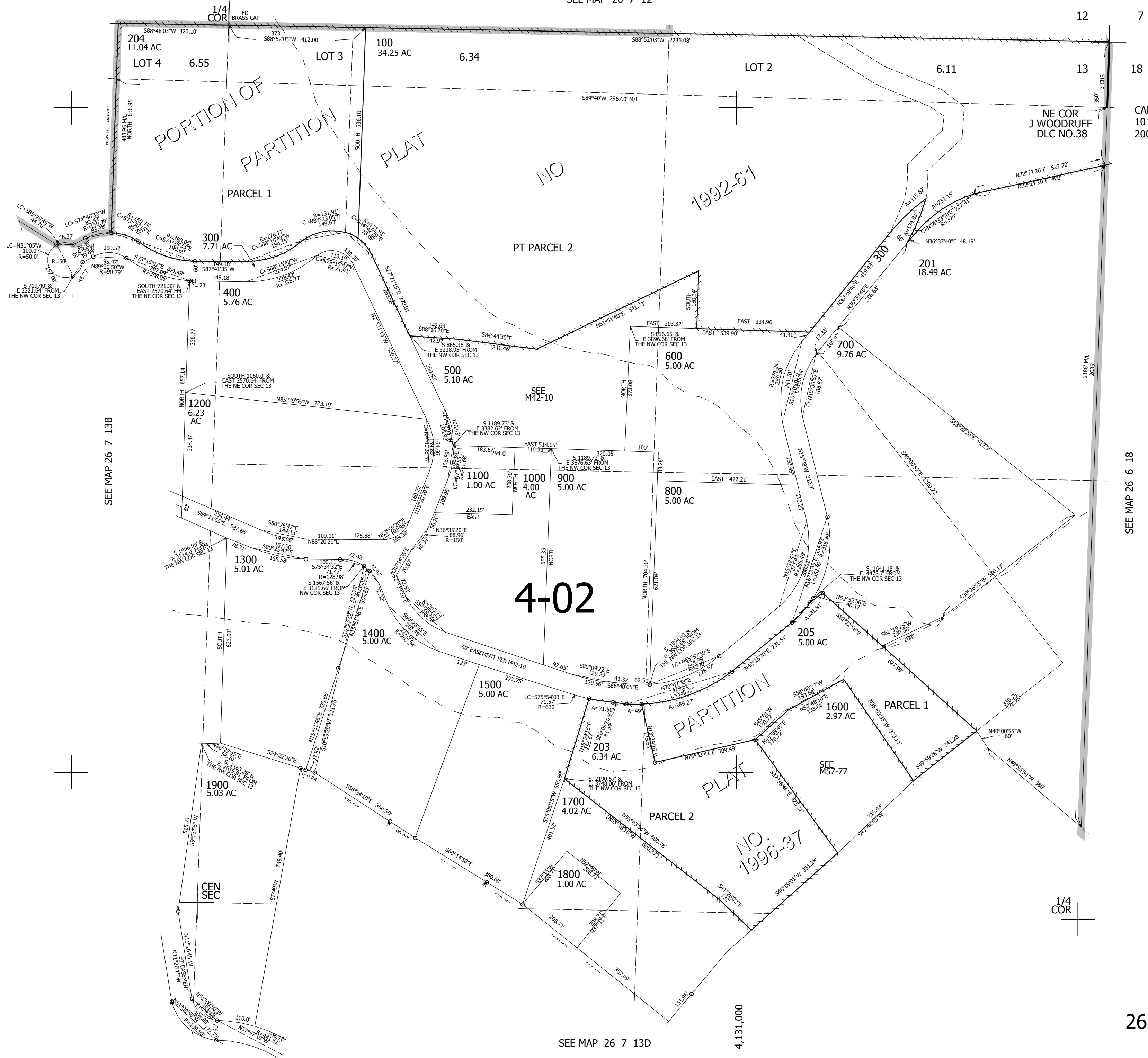
NE1/4 SEC.13 T.26S. R.7W. W.M. DOUGLAS COUNTY

REVISED ON 12-12-13

26 7 13A

1" = 200'

SEE MAP 26 7 12



CANCELLED NO'S 101 206 202 200 102

SEE MAP 26 6 18

613,000

26 7 13A

SEE MAP 26 7 13D

4,131,000