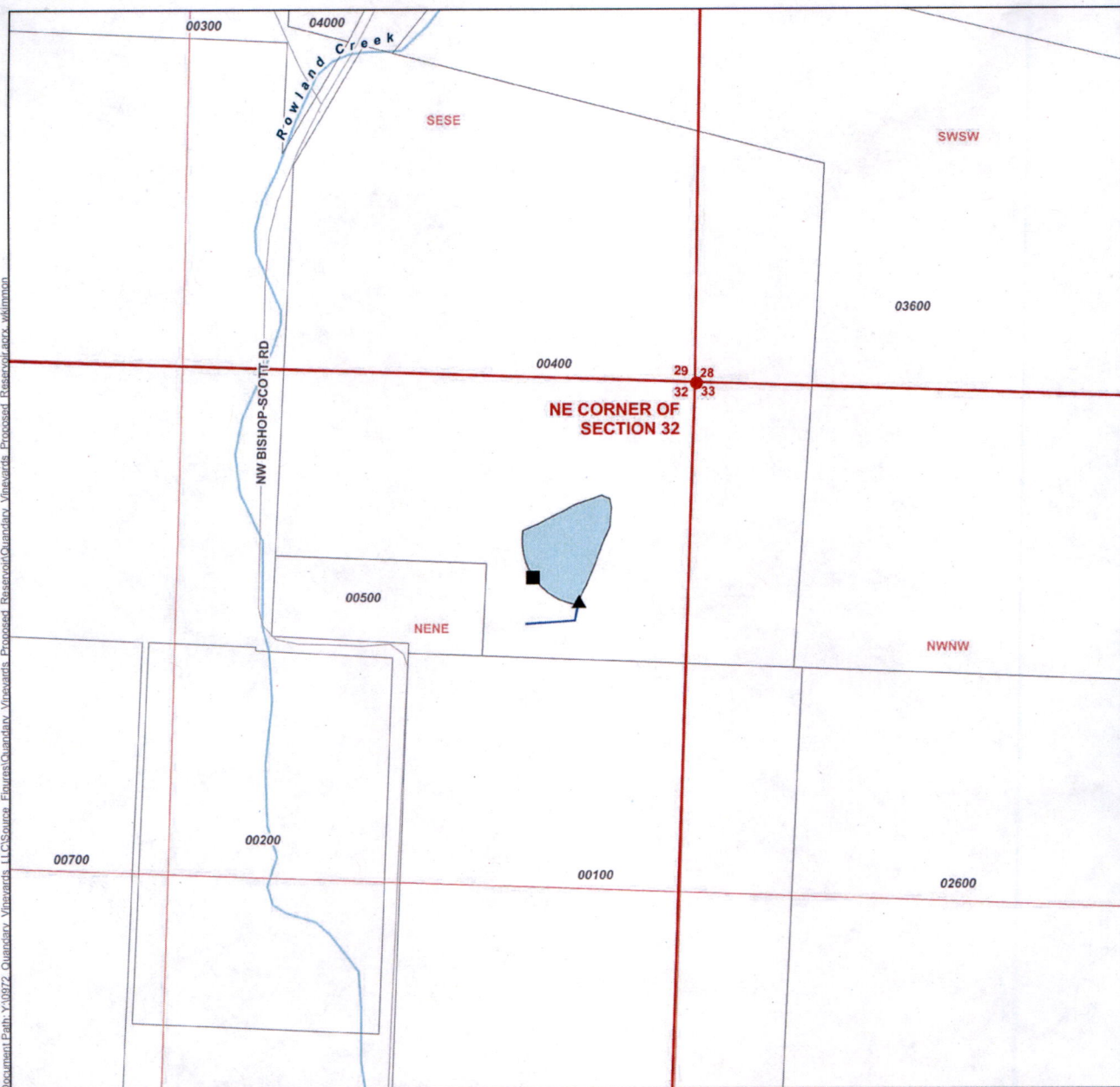


DocumentPath: Y:\0972\_Quandary\_Vineyards\_LLC\Source\_Features\Quandary\_Vineyards\_Processed\_Reservoir.aprx, wtkimmon



- LEGEND**
- Proposed Reservoir
  - Dam
  - Outlet Structure
  - Outlet Pipe
  - Tax Lot
  - Watercourse

**Alternate Reservoir Application**  
**Quandary Vineyards LLC**  
 Township 2 South, Range 4 West (W.M.)  
 Yamhill County

**LOCATION DESCRIPTION**  
**Proposed Reservoir**  
 Located 450 feet South and 330 feet West from the NE corner of Section 32, Township 2 South, Range 4 West (W.M.)  
**Dam**  
 Located 510 feet South and 405 feet West from the NE corner of Section 32, Township 2 South, Range 4 West(W.M.)

**RECEIVED**  
**OCT 14 2022**  
**OWRD**

**DISCLAIMER**  
 This map was prepared for the purpose of identifying the location of a water right only and it is not intended to provide legal dimensions or location of property ownership lines.

Date: August 25, 2022  
 Data Sources: BLM, ESRI, OWRD, USGS

