

FOR ASSESSMENT AND TAXATION ONLY

SECTION 16 T.11S. R.2W. W.M.  
Linn County  
1" = 400'

SEE MAP 11 2W 9

11S02W16  
LINN COUNTY



1600' East

400' South

4' Tall x 20' Long Dam

30' wide x 400' long  
2' average depth  
Reservoir

8-23

8-26

9-65

9-33

9-48

RECEIVED  
OCT 31 2022  
OWRD

SEE MAP 11 2W 17

SEE MAP 11 2W 17

SEE MAP 11 2W 9C

SEE MAP 11 2W 9

SEE MAP 11 2W 15C

S.W. COR.  
WALTER KETCHUM  
D.L.C. 42 AND  
N.W. COR.  
JOEL KETCHUM  
D.L.C. 47

S.W. COR.  
JOEL KETCHUM  
D.L.C. 47

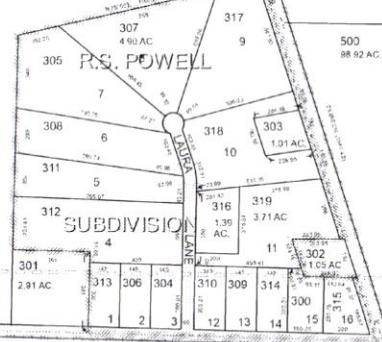
N.W. COR.  
JEREMIAH DRIGGS  
D.L.C. 48

S.W. COR.  
JEREMIAH DRIGGS  
D.L.C. 48

N.W. COR.  
HENRY V. CLYMER  
D.L.C. 50

S.E. COR.  
JEREMIAH DRIGGS  
D.L.C. 48

N.E. COR.  
HENRY V. CLYMER  
D.L.C. 50



SEE MAP 11 2W 21

SEE MAP 11 2W 21A

11S02W16  
LINN COUNTY  
5/28/2020