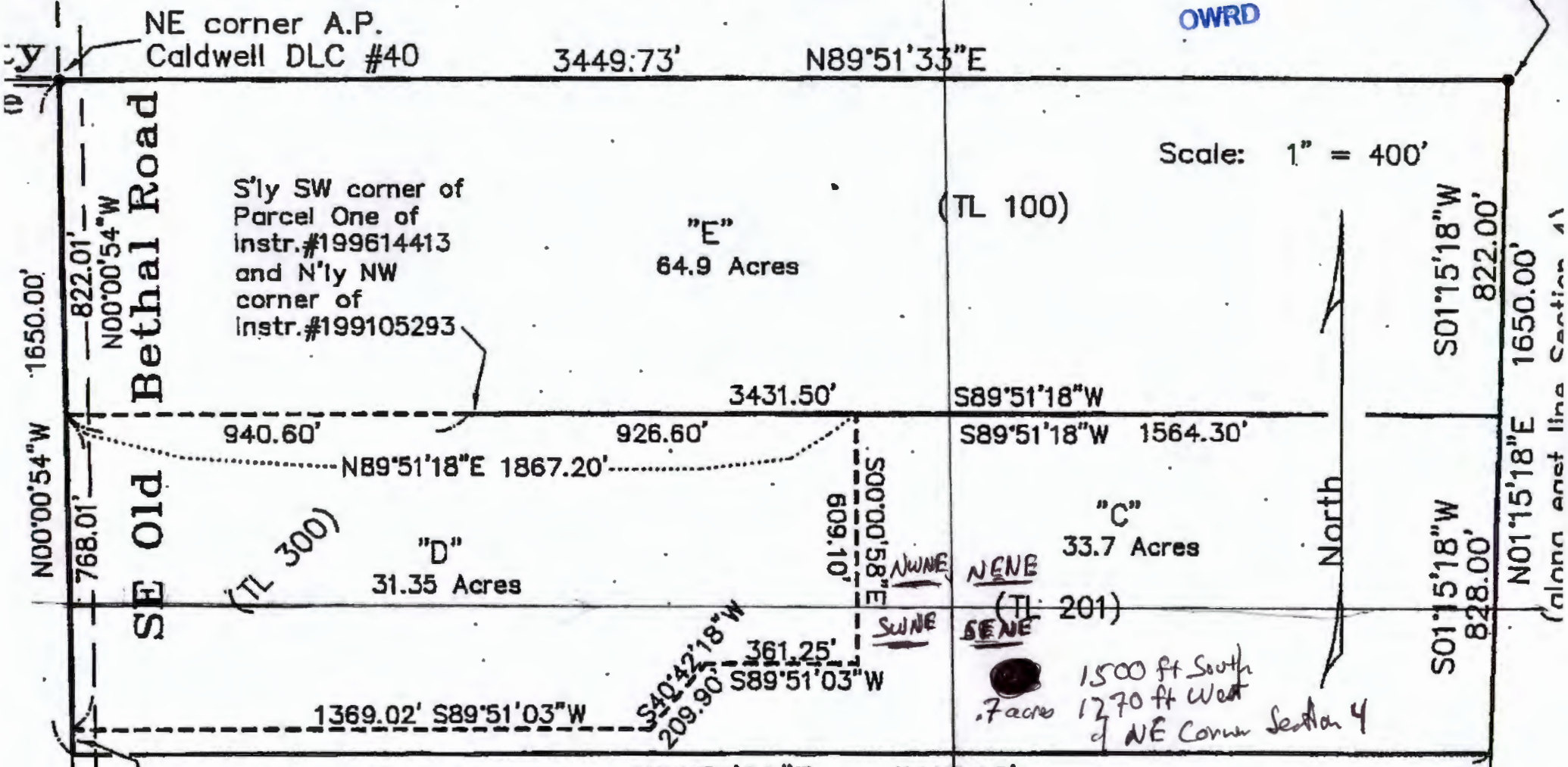


Location: Section 4, T. 6 S., R. 4 W., WM., Yamhill County, OR

Lot: 6404 - 100, 201, 300 Date: 8 April 2013

RECEIVED
AUG 07 2023
OWRD

NE corner
Section 4



Legend

_____ = Existing lot line

Matt Dunckel
MacDonald & Assoc.
3765 Riverside Drive
McMinnville, Oregon 97128
Phone : 503-472-7904
Fax: 503-472-0367

REGISTERED
PROFESSIONAL
LAND SURVEYOR

Matthew F. Dunckel

OREGON
July 13, 1981
MATTHEW F. DUNCKEL

East line
P. Caldwell
LC #40)

(along east line Section 4)