

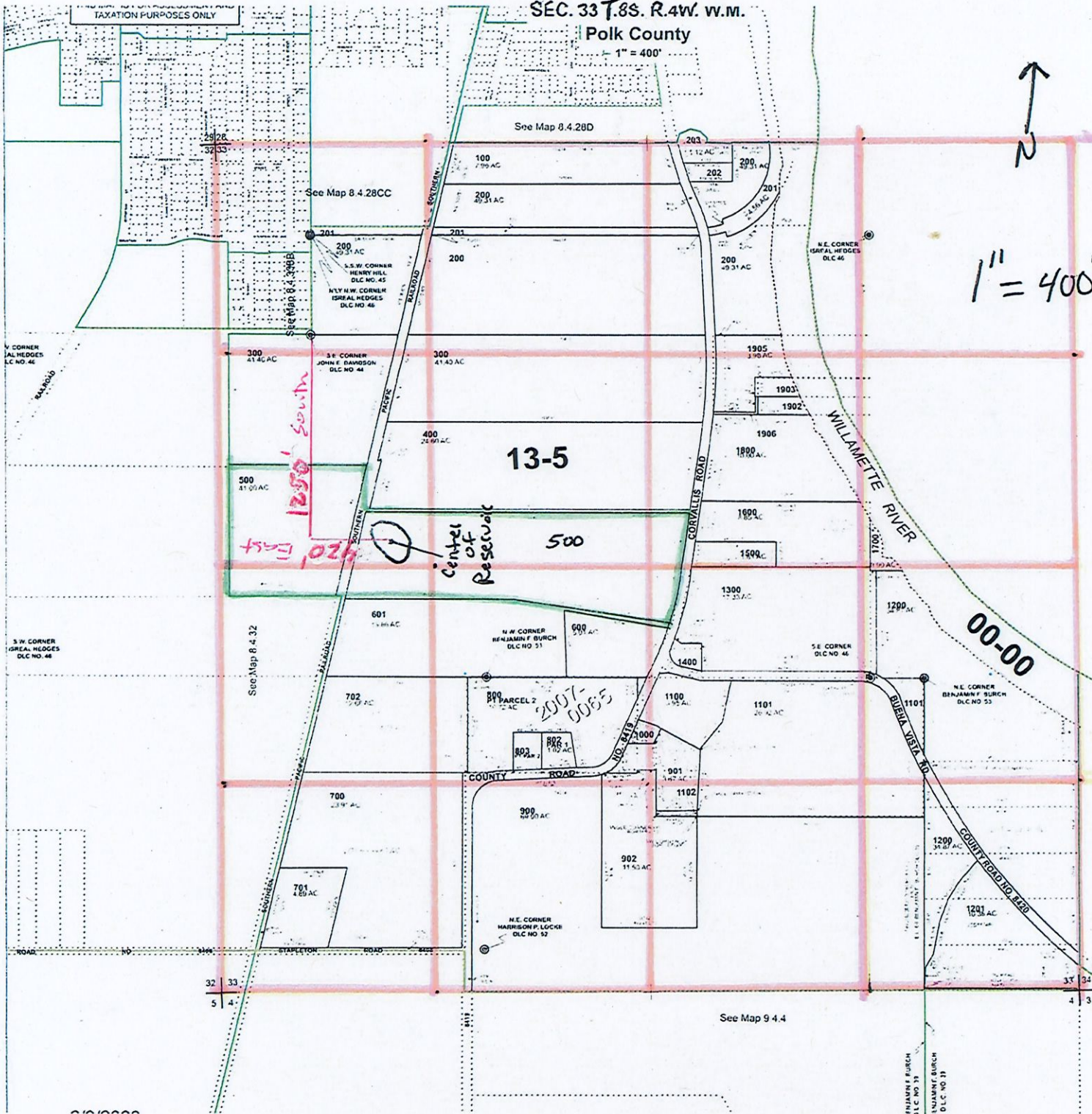
SEC. 33 T. 8S. R. 4W. W.M.

Polk County

1" = 400'

8.4.33

TAXATION PURPOSES ONLY



Cancelled No.

- 204
- 205
- 206
- 801
- 903
- 1001
- 1301
- 1900
- 1901
- 1904

1" = 400'

= Quarter-Quart Lines

RECEIVED

DEC 21 2023

OWRPD

See Map 8 4 34

COUNTY ROAD NO. 8426

See Map 9 4 4

32 33
5 4

Sec. Map 8 4 32

See Map 8 4 39B

See Map 8 4 28CC

13-5

500

Center of Reservoir

1250' South
420' East

PARCEL 2
2007-0085

00-00

See Map 8 4 34

DEC 21 2023

RECEIVED

OWRPD

See Map 8 4 34

COUNTY ROAD NO. 8426

See Map 9 4 4

32 33
5 4

Sec. Map 8 4 32

See Map 8 4 39B

See Map 8 4 28CC

13-5

500

Center of Reservoir

1250' South
420' East

PARCEL 2
2007-0085

00-00

See Map 8 4 34

DEC 21 2023

RECEIVED

OWRPD

See Map 8 4 34

COUNTY ROAD NO. 8426

See Map 9 4 4

32 33
5 4

Sec. Map 8 4 32

See Map 8 4 39B

See Map 8 4 28CC