



NE NW

DIVERSION POINT  
Monument 5/8" iron rod

SOUTH  
UMPQUA  
RIVER

NW NE

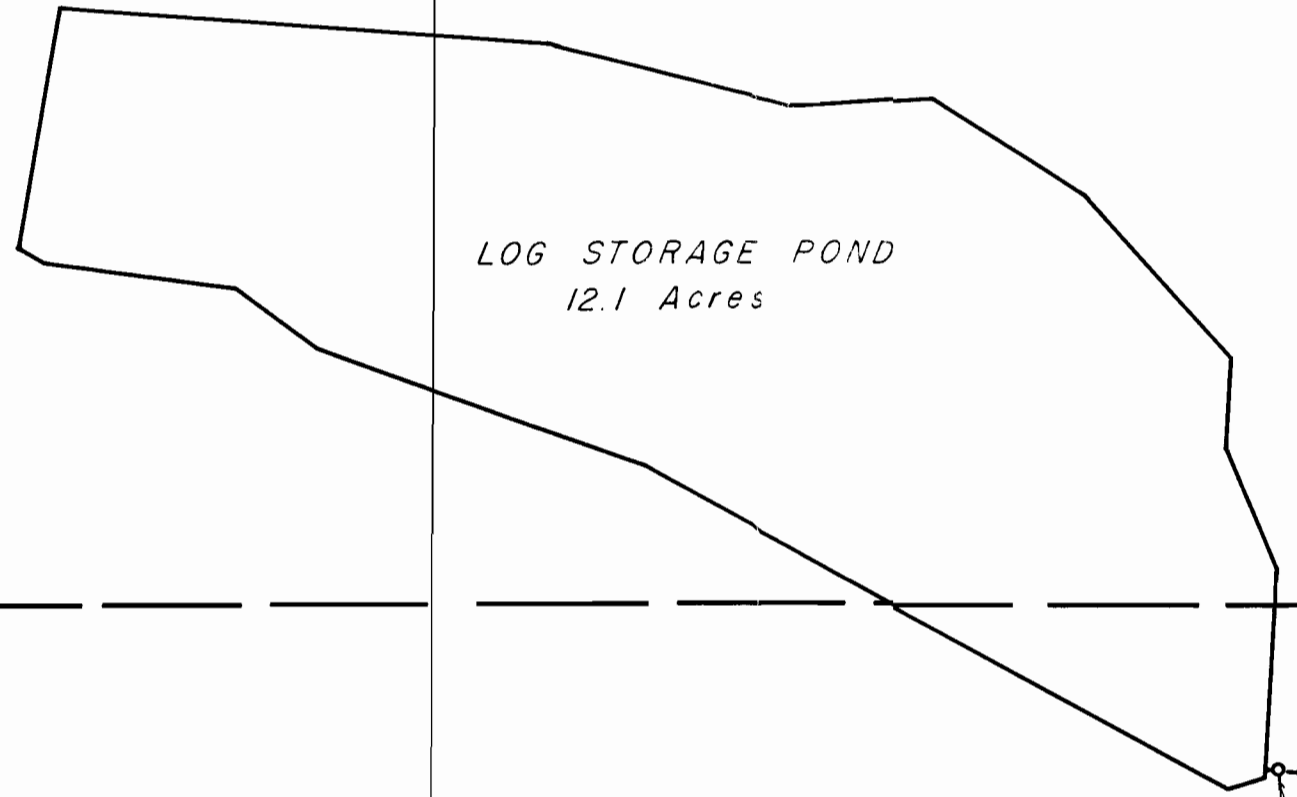
TIE N 44° 18' W 2727.0'

SW NW

SE NW

SW NE

SE NE



LOG STORAGE POND  
12.1 Acres

6" Cast iron pipe

POND INLET

FIRE  
RESERVOIR

0.7 Acres

10" pipe

NE SW

TIE S 86° 52' W 3057.7'

East 1/4 corner  
Section 28, T.28 S., R.6 W.

I, R. H. GEE, of Roseburg, Oregon, do hereby certify that this map was made from notes taken during an actual survey made by me on October 7, 1955; that the monument shown on this map consisting of a 5/8" iron rod is N 44° 18' W 2727.0' from the East 1/4 corner of Section 28, T.28 S., R.6 W., W.M.

*R. H. Gee*

NW SW



MAP OF  
WATER RIGHT APPLICATION  
FOR  
**PACIFIC PLYWOOD CORP.**  
DILLARD, OREGON  
SW NW; SE NW; NE SW;  
SECTION 28, T.28 S., R.6 W., W.M.  
Scale 1"=200' Oct, 7, 1955  
R. H. GEE

Application No. R-30439 + 30372  
Permit No. R-2031 + 24950