

TOPOGRAPHY FROM AERIAL PHOTOGRAPHS BY STEREO-COMPARAGRAPH METHODS. PHOTOS TAKEN IN 1950. FIELD CHECK 1951, NOT COMPLETE.

GRID BASED ON OREGON COORDINATE SYSTEM-SOUTH ZONE.

HORIZONTAL CONTROL BY E.W.E.B. FROM U.S.G.S. TRIANGULATION. VERTICAL CONTROL BY E.W.E.B. FROM U.S.G.S. AND B.P.R. LEVELS.

DATUM IS MEAN SEA LEVEL.

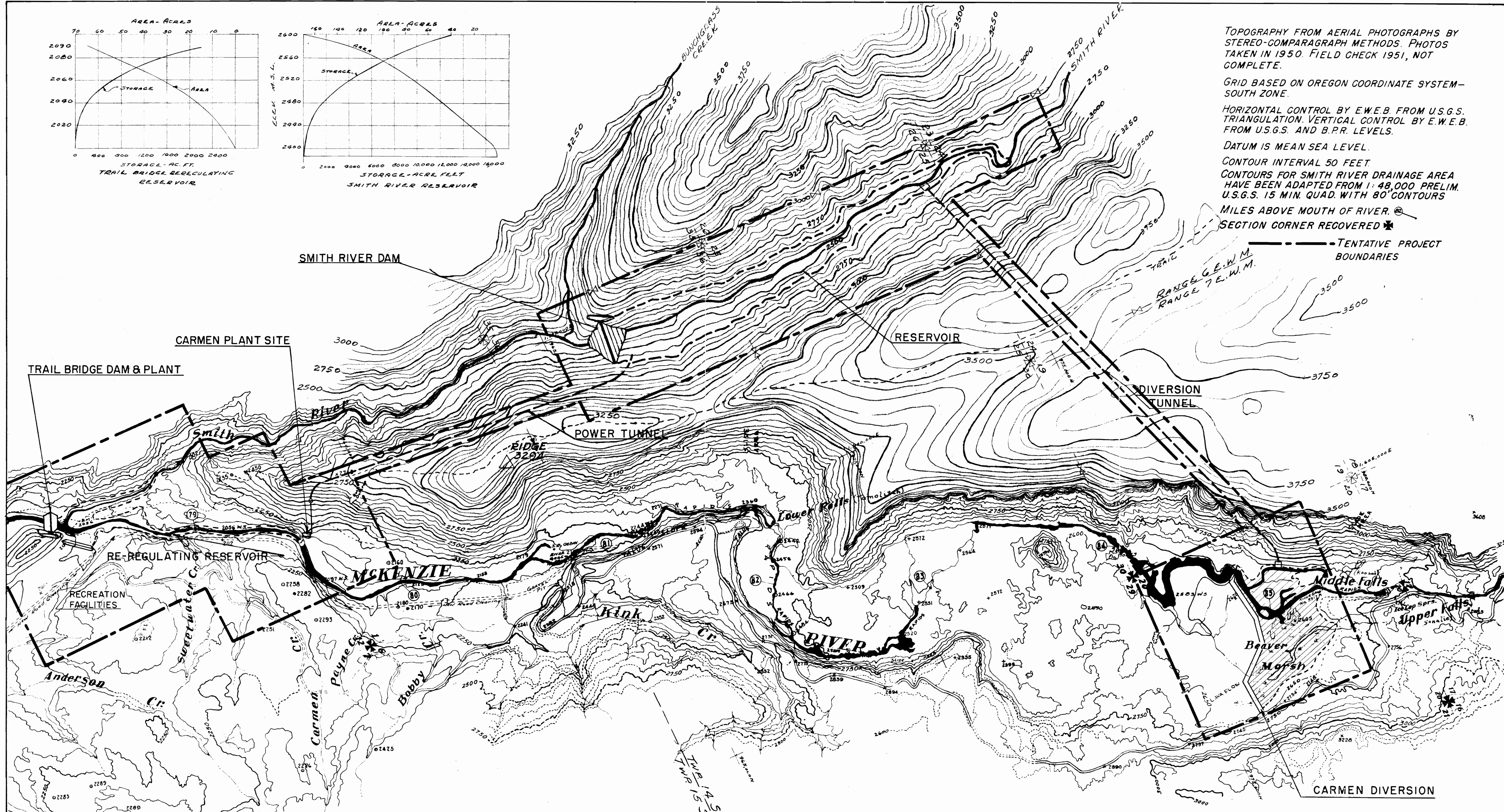
CONTOUR INTERVAL 50 FEET.

CONTOURS FOR SMITH RIVER DRAINAGE AREA HAVE BEEN ADAPTED FROM 1:48,000 PRELIM. U.S.G.S. 15 MIN. QUAD. WITH 80' CONTOURS

MILES ABOVE MOUTH OF RIVER. 0

SECTION CORNER RECOVERED \*

TENTATIVE PROJECT BOUNDARIES



THIS MAP IS A PART OF THE APPLICATION FOR LICENSE MADE BY THE UNDERSIGNED THIS 25th DAY OF FEB 1958

CITY OF EUGENE, OREGON, a Municipality, by and through its Eugene Water and Electric Board

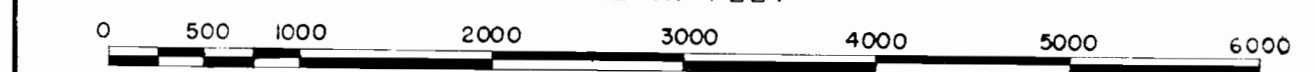
BY *Byron Price*  
BYRON PRICE, SUPERINTENDENT

Topography by Aerial Photographs and from U.S.G.S. Quadrangles  
Datum is Mean Sea Level

EUGENE WATER & ELECTRIC BOARD  
EUGENE, OREGON  
CARMEN-SMITH PROJECT

PROJECT AREA MAP

SCALE IN FEET



DR. VMF. SCALE: 1" = 1000'. DATE FEB 20, 1958. E.W.E.B. FILE No. D-7005

|            |         |         |         |         |         |
|------------|---------|---------|---------|---------|---------|
| App'l Nos. | R 32142 | R 32143 | R 32144 | R 32145 | R 32146 |
| Rec. Nos.  | R-2137  | 25514   | R-2138  | R-2139  | 25515   |