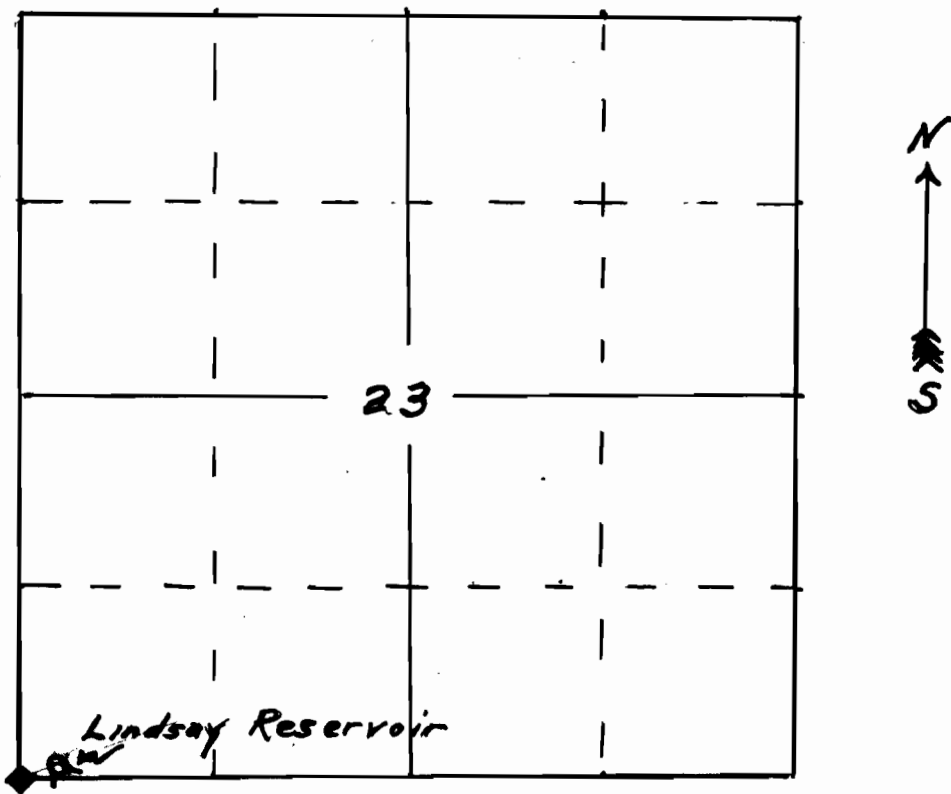


STATE OF IOWA  
DEPARTMENT OF LAND AND WATER  
DESIGNATION  
NO. 1000  
STATE ENGINEER

# Lindsay Reservoir

Sec. 23 T.38S, R.3E.

Scale 4" = 1 mile



From the corner common to Sec 22, 23, 26 & 27  
N 70° E - 3 chains; thence S 60° E - 1 1/2 chains to the  
center of the dam. Reservoir located in the  
SW 1/4 SW 1/4 SW 1/4 Sec. 23 T.38S, R.3E.

Application No. R-34181  
Permit No. R-4144