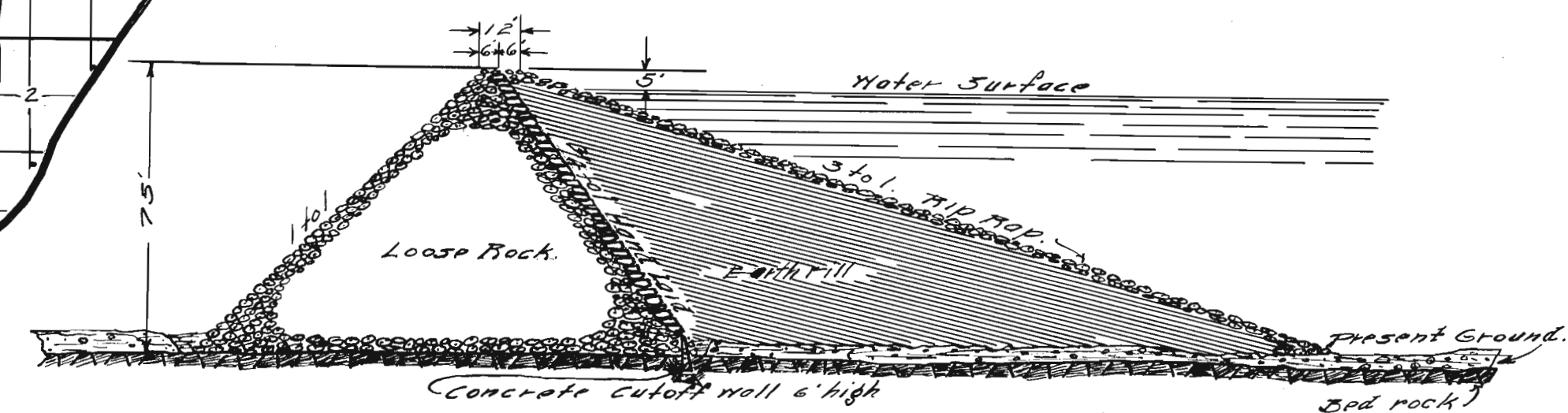
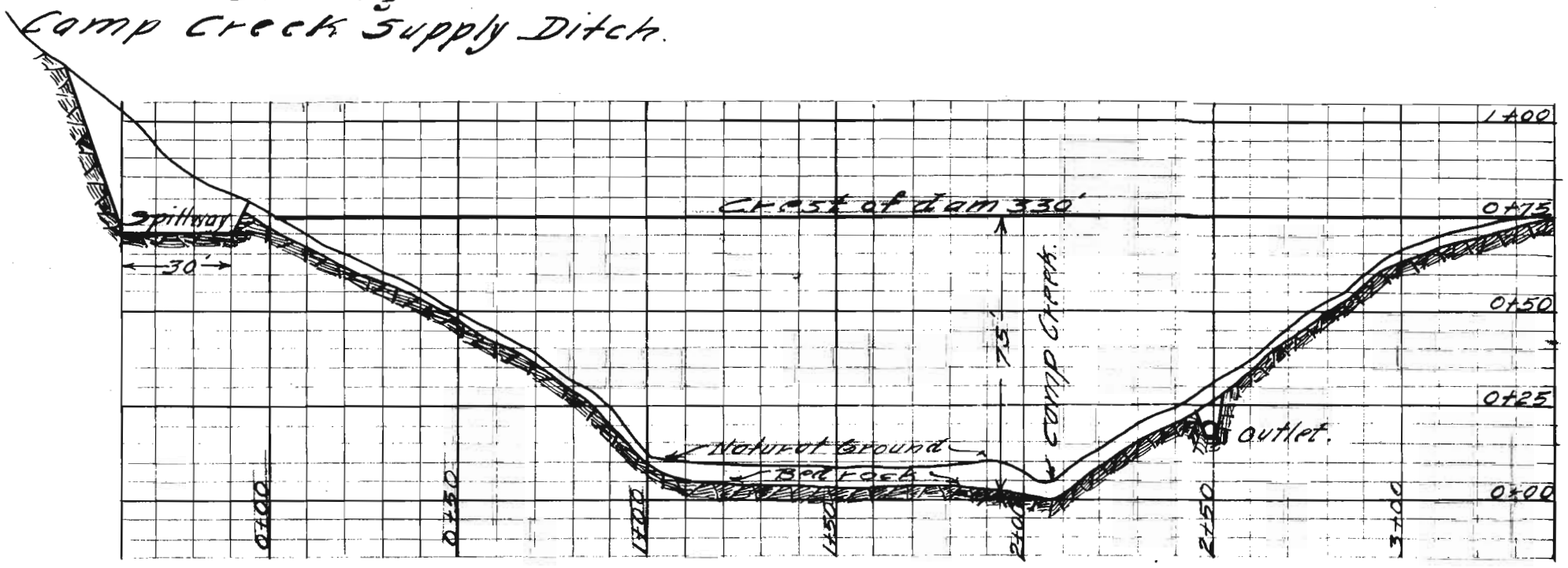


Camp Creek Canal
Baker County Oregon
Scale 2 in. = 1 mile.

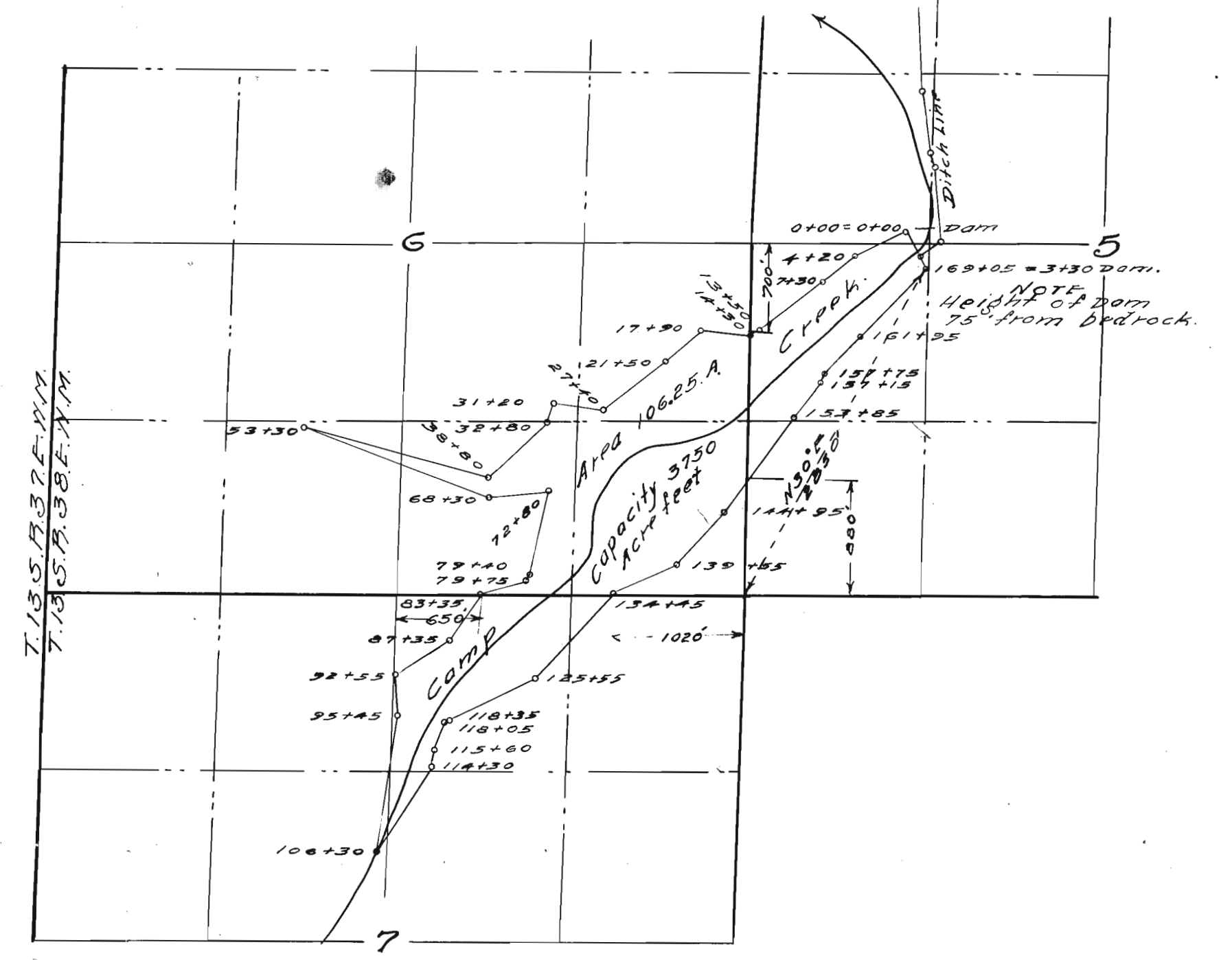


Maximum X-section
of
Camp Creek Dam.
Scale 40 feet = 1 inch.

Drainage Area
for
Camp Creek Reservoir
showing
Camp Creek Supply Ditch.



PROFILE
of
CAMP CREEK DAM.
SCALE
40' = 1 in.



Camp Creek Reservoir.
Baker County Oregon
Scale 1000' = 1"

NOTE
Spillway is 50' wide, 5' deep & 100' long. 1% grade.
The canal outlet is a 30" steel pipe covered
with concrete 5" thick, with a concrete collar
every 25' to prevent the water following
the pipe. Collars extend 3' from pipe. The
regulating valve is at the down stream end
of the dam. The pipe will be laid on the
solid rock and will have a total length
of approx. 300'

I, Frank Parrott, of Baker City, Baker County Oregon, do hereby certify
that this map was made from notes taken during an actual survey made
under my immediate supervision, commenced on the 28 day of June
and ending on the 1 day of July 1910, and that it correctly represents
the works described in the accompanying application, together
with the location of streams and other ditches in the immediate
vicinity, and has written thereon the area in each smallest legal
subdivision which it is proposed to irrigate.

Frank Parrott
Surveyor

Application No. 509
Reservoir Permit No. 47