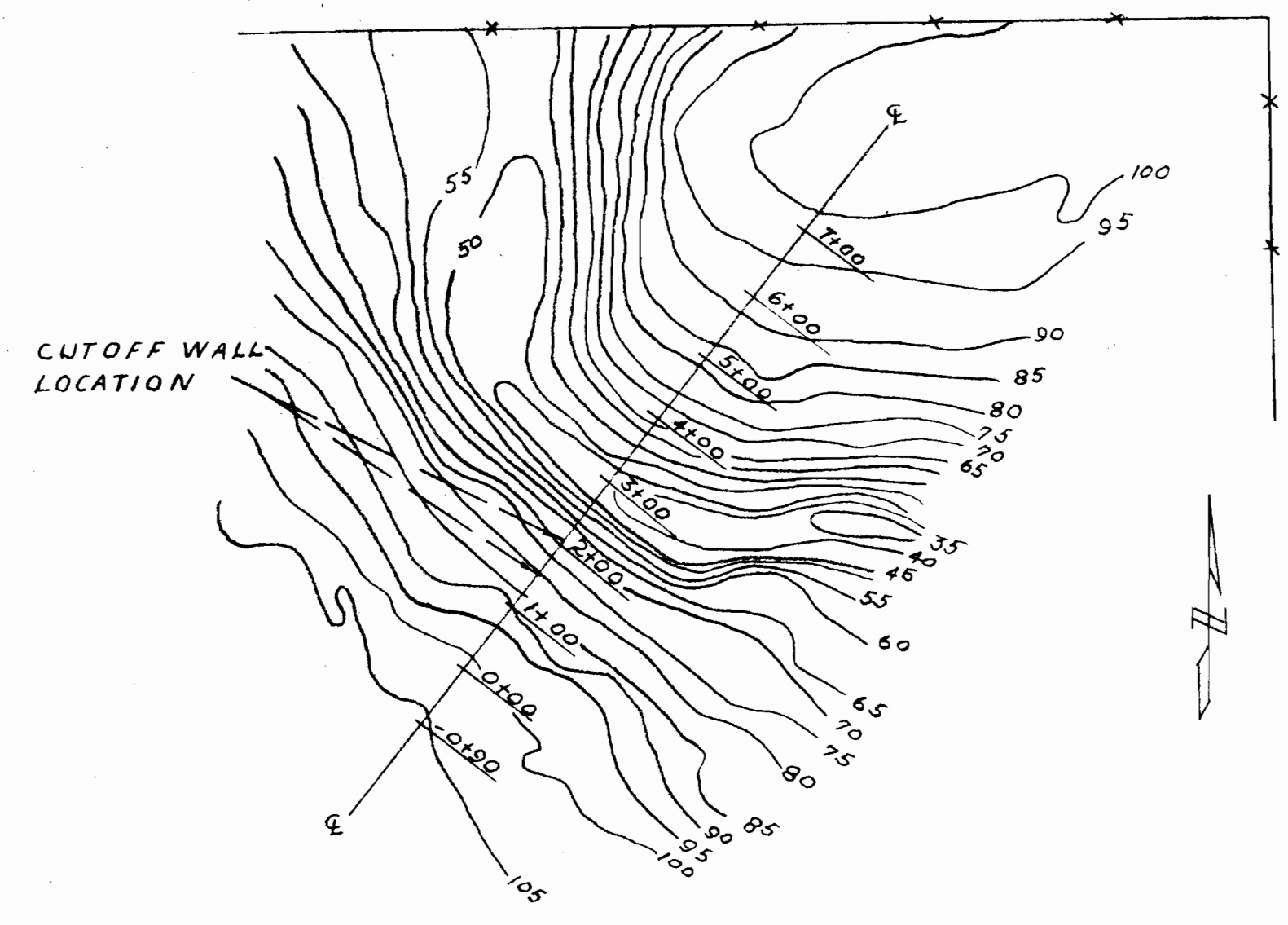
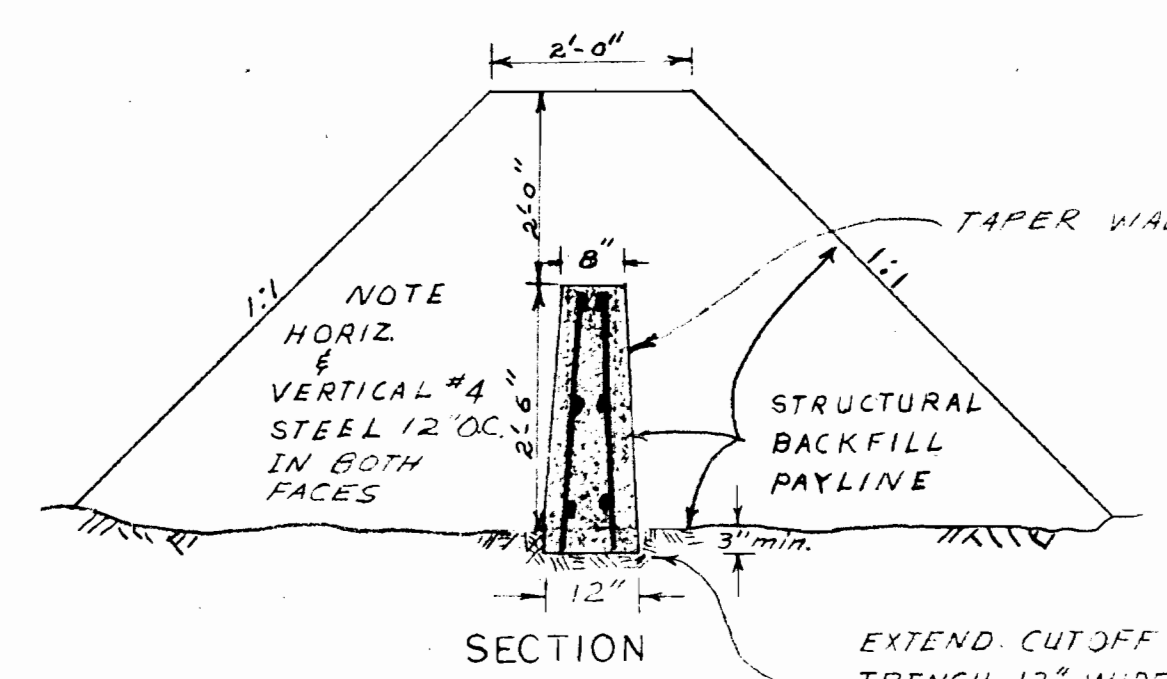


RECEIVED
 APR 3 1969
 STATE ENGINEER
 SALEM, OREGON

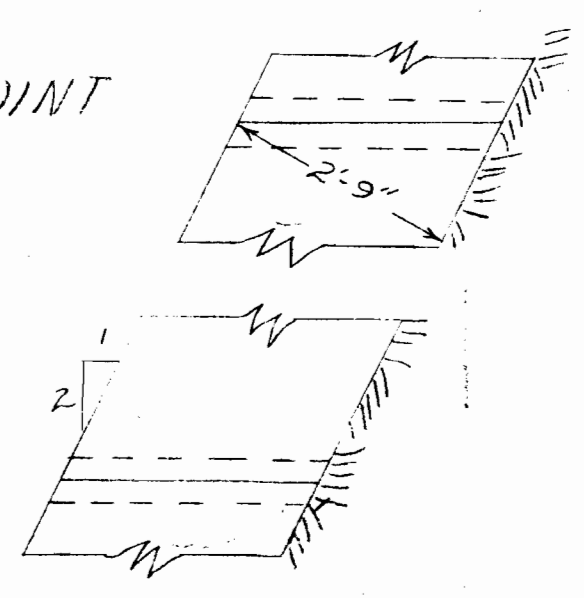
MATERIALS:
 CONCRETE - 61 CY
 STEEL - 644 LBS.
 BACKFILL - 74 CY
 ROCK EXCA - 70 CY



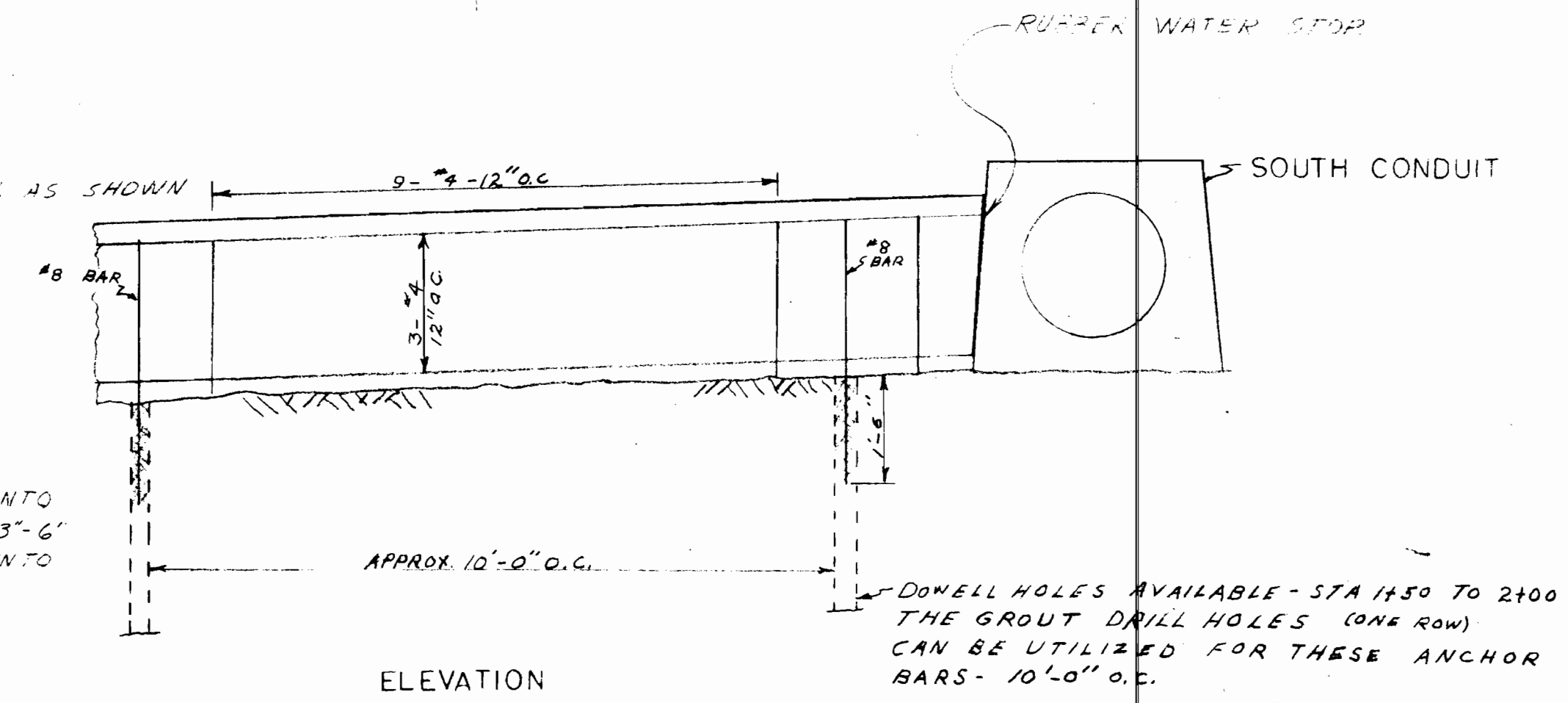
LOCATION
 RIGHT ABUTMENT CUTOFF WALL



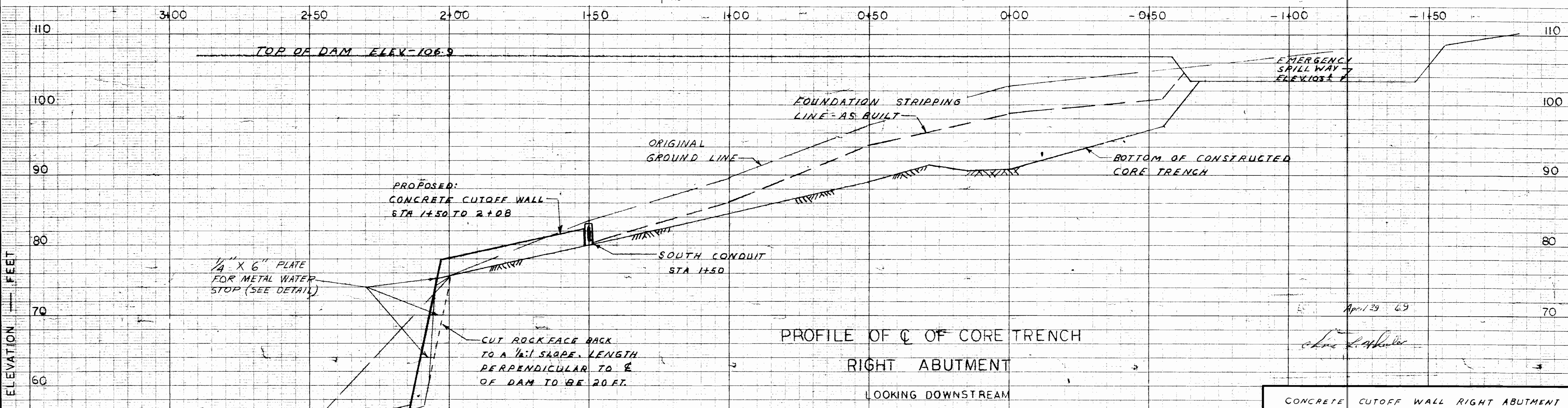
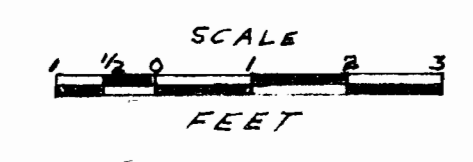
EXTEND CUTOFF INTO TRENCH 12" WIDE 3'-6" DEEP EXCAVATED INTO BEDROCK.



CONSTRUCTION JOINT DETAIL
 SCALE 1/2" = 1'-0"



DETAIL OF CONCRETE CUTOFF WALL



PROFILE OF Q OF CORE TRENCH
 RIGHT ABUTMENT
 LOOKING DOWNSTREAM

CONCRETE CUTOFF WALL RIGHT ABUTMENT
 PINE HOLLOW PROJECT
 PINE HOLLOW COOPERATIVE, INC.
 SOUTHERN WASCO SWCD, WASCO CO., ORE.
 U. S. DEPARTMENT OF AGRICULTURE
 SOIL CONSERVATION SERVICE

Designed	EAR - CH	Date	12-68	Approved by	<i>[Signature]</i>
Drawn	EAR	Traced	1-69	Title	<i>[Signature]</i>
Checked	MLB	Sheet	1-69	Drawing No	No 24a
	HJW		2-69		7-E-20771

ATTACHMENT NO. 1
 ADDENDUM NO. 1