

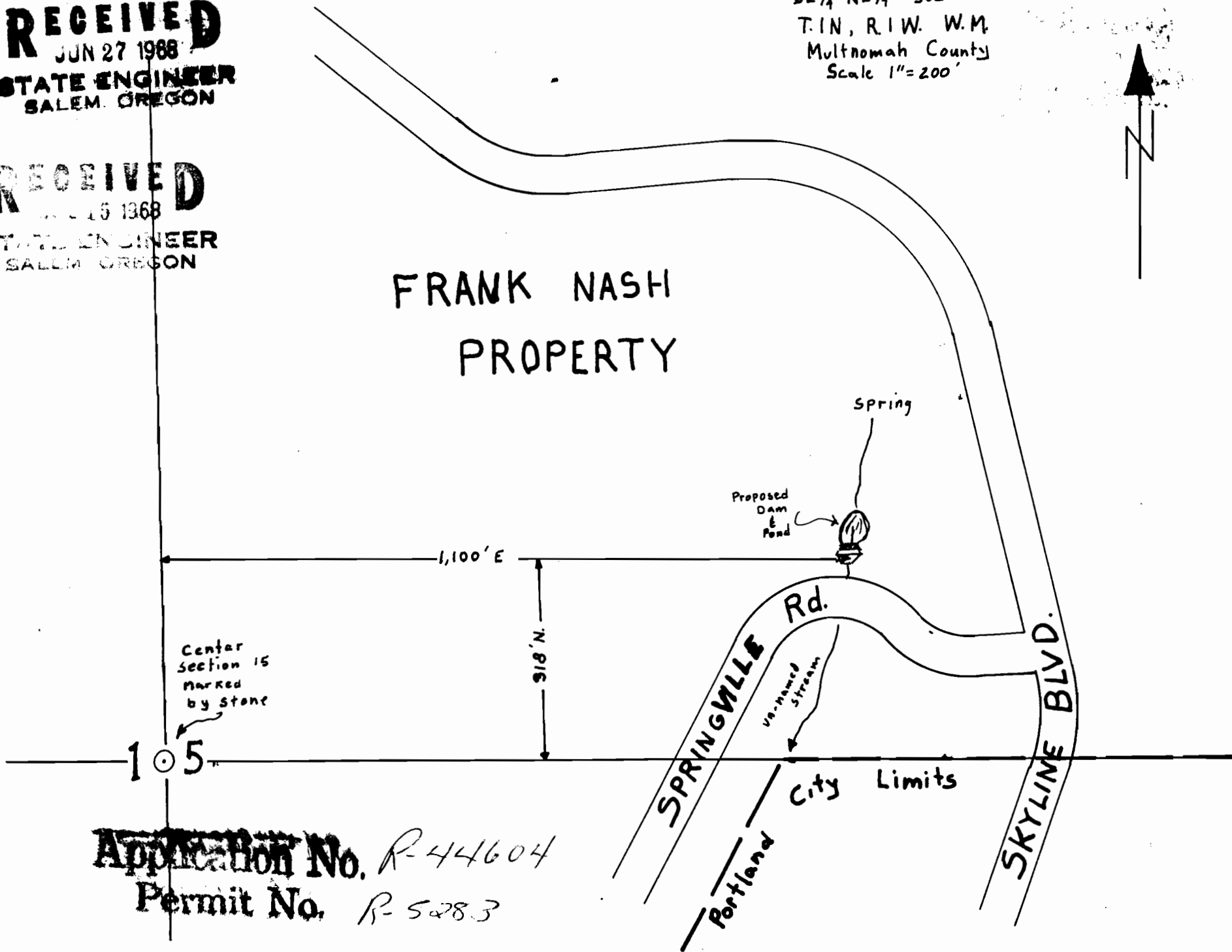
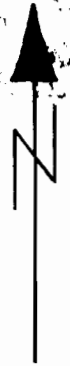
Water Rights Application

Frank Nash
SW 1/4 NE 1/4 Sec 15
T.1N, R.1W. W.M.
Multnomah County
Scale 1"=200'

RECEIVED
JUN 27 1988
STATE ENGINEER
SALEM, OREGON

RECEIVED
JUN 15 1988
STATE ENGINEER
SALEM, OREGON

FRANK NASH
PROPERTY



Application No. R-44604
Permit No. R-5283