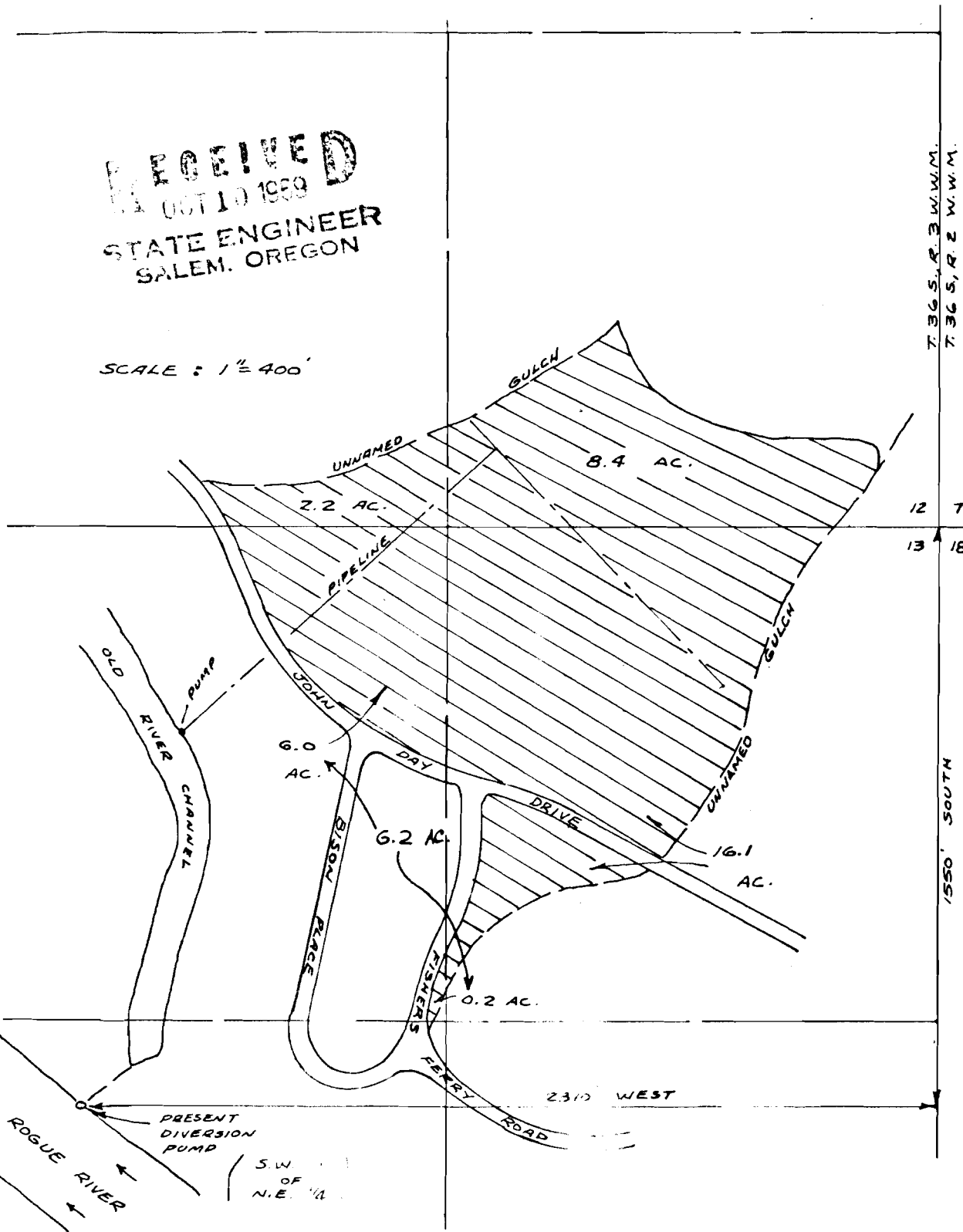


RECEIVED
 OCT 10 1969
 STATE ENGINEER
 SALEM, OREGON

SCALE: 1" = 400'

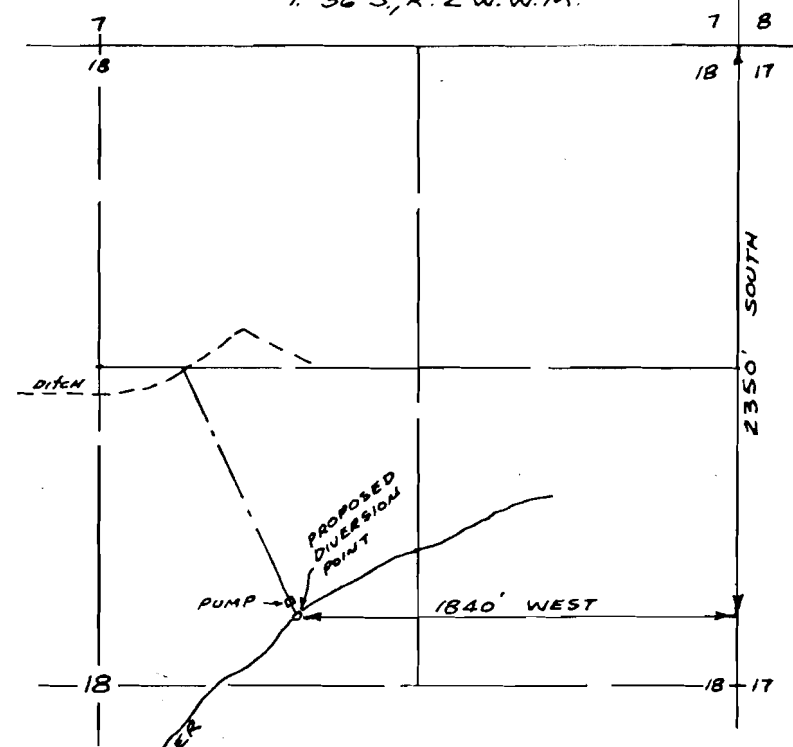


T. 36 S., R. 2 W. W.M.
 T. 36 S., R. 2 W. W.M.

12 7
 13 18

1550' SOUTH

T. 36 S., R. 2 W. W.M.



SCALE: 1" = 800'

MAP TO ACCOMPANY APPLICATION OF GENERAL DEVELOPMENT COMPANY
 FOR A CHANGE IN POINT OF DIVERSION OF WATER FROM ROGUE RIVER
 SEPT. 26, 1969

D-140, D-11, R-46561

R 5 01