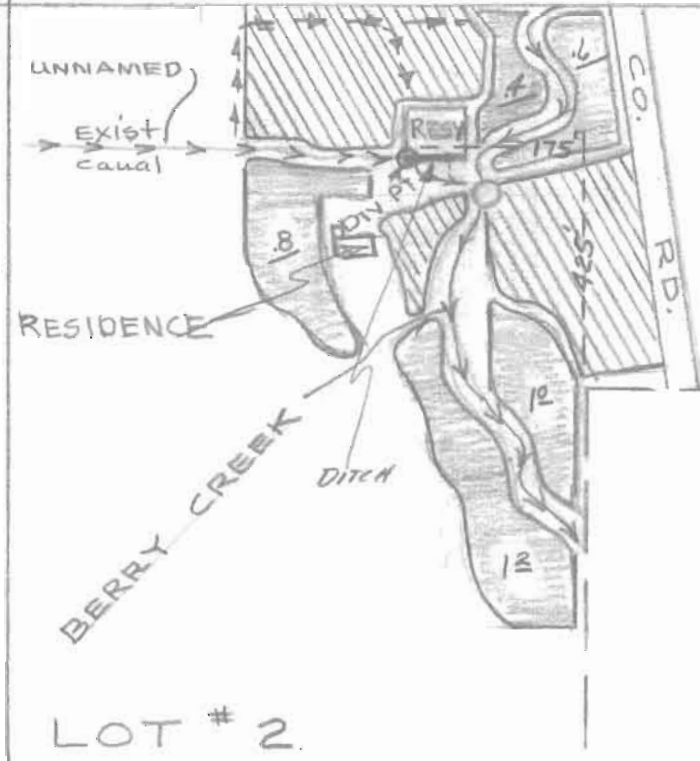


T. 4S. R. 5W. W.M.

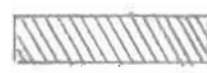
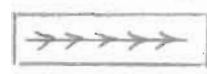

49853
 49853
 49853

2 1
 11 12



C BERRY
 D.L.C #42

NOTES

-  Existing irrigated acreage 4.0 ACRES
-  Direction of stream flow
-  Proposed irrigated acreage 4.0 ACRES

DIVERSION POINT & DAM SPILLWAY

LOCATED 425^{ft} N. & 175^{ft} W. FROM THE N.W. CORNER OF N.W. CORNER-BERRY D.L.C #42 SEC# 11

APPROXIMATE WATERSHED AREA INTO UNNAMED TRIB 350 TO 425 ACRES

YEARLY RATES OF FLOW HIGH 3.5 C.S.F
 LOW .12 C.S.F

RECEIVED
 JAN 27 1973
 STATE ENGINEER
 SALEM, OREGON

RECEIVED
 MAY 3 1972
 STATE ENGINEER
 SALEM, OREGON

Application No. R-49853
 Permit No. R 6138 X

Prepared By: KENNETH HASSGARD
 RT 2 Box 293A McMinnville ORE
 9/15/72

37942