

RECEIVED

Application No. R-53633-53624

JOSEPHINE COUNTY

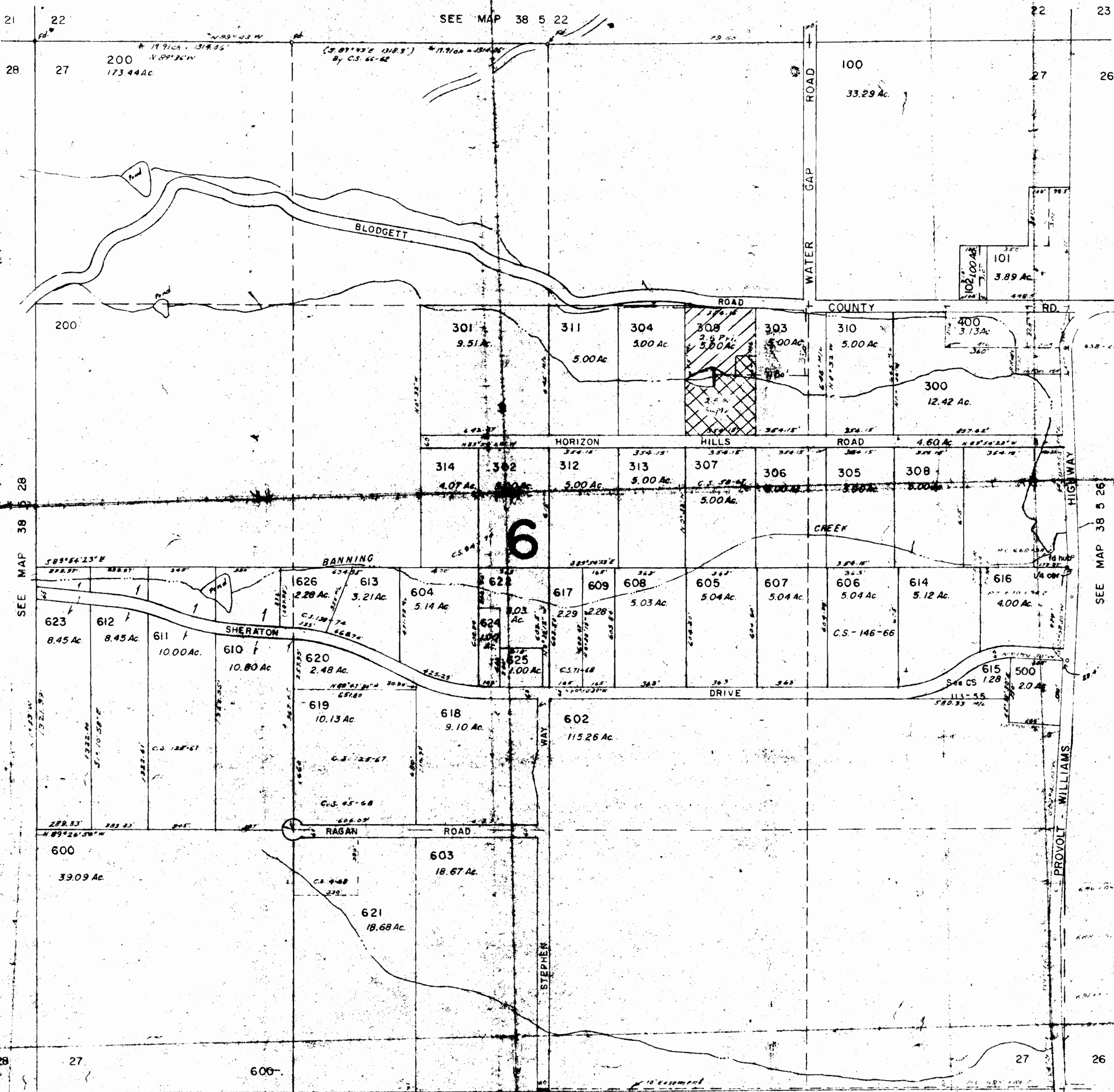
Permit No. R 6502-4-40779

1" = 400'

SEP 23 1975  
WATER RESOURCES DEPT.  
SALEM, OREGON

SEE N.D. PRICE BUR.  
DATED 1956

SEE MAP 38 5 22



CANCELLED T.L.  
190  
601  
690

SEE MAP 38 5 28

SEE MAP 38 5 26

SEE MAP 38 5 34