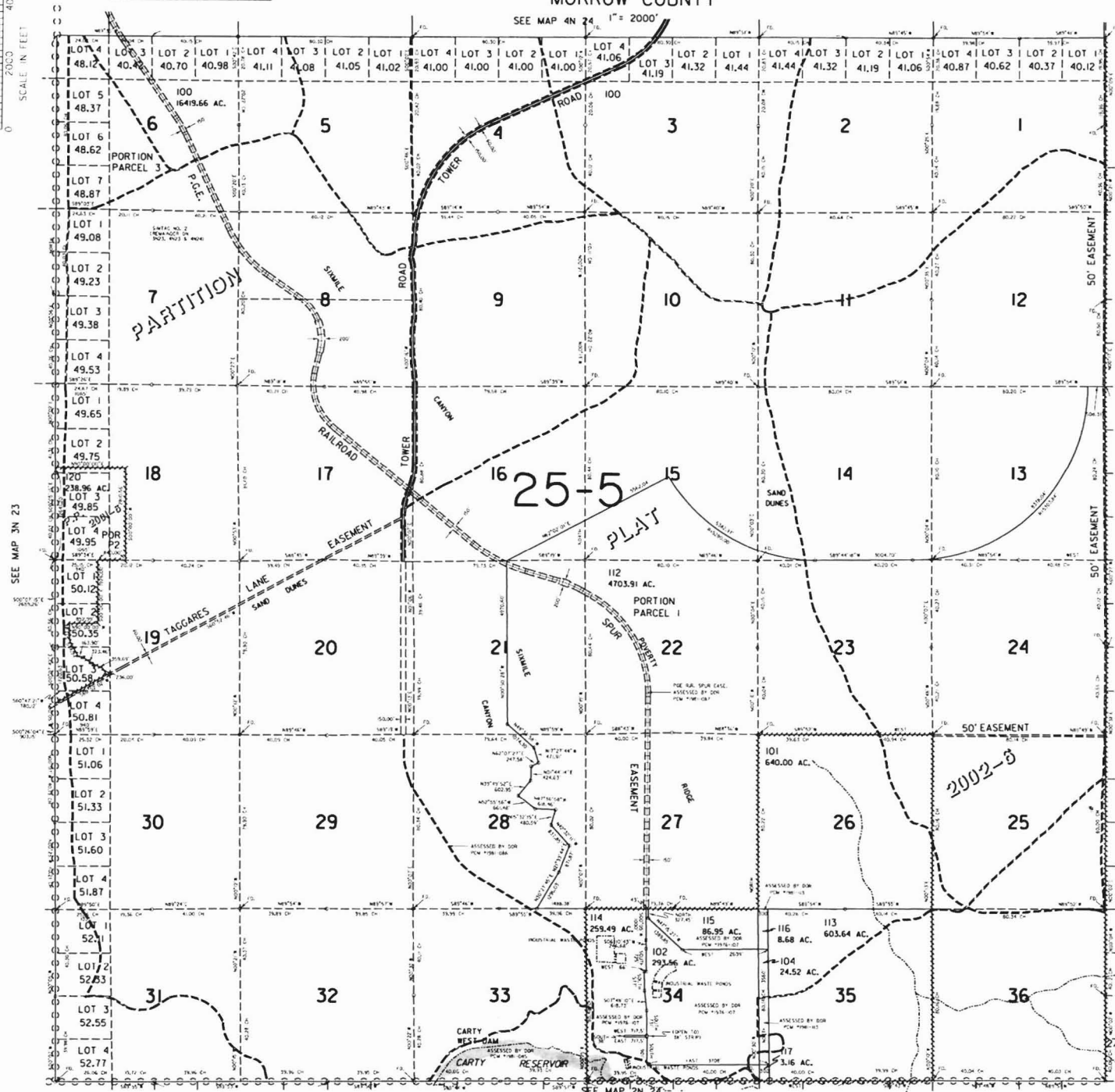


THIS MAP WAS PREPARED FOR ASSESSMENT PURPOSE ONLY

T.3N. R.24E. W.M. MORROW COUNTY

3N 24



- CANCELLED NUMBERS: 103, 105, 106, 107, 108, 109, 110, 111, 118, 119, 200

SEE MAP 3N 23

SEE MAP 3N 25

BOUNDARY RESERVATION

NAVAL

Revised 2/20/2003, SD 3N 24

27 R6605

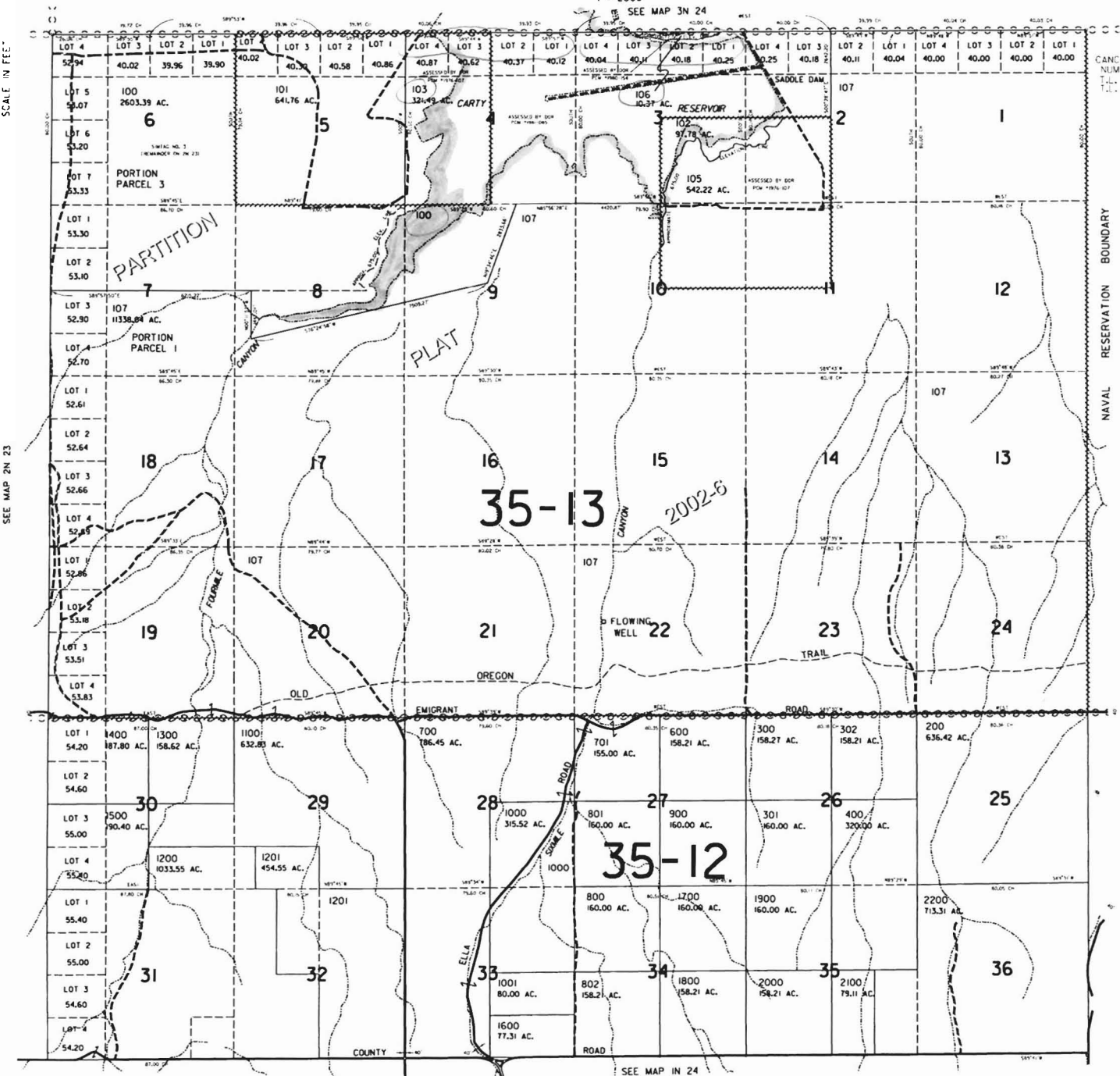
THIS MAP WAS PREPARED FOR ASSESSMENT PURPOSE ONLY

T.2N. R.24E. W.M. MORROW COUNTY

2N 24

1" = 2000'

0 2000 4000 SCALE IN FEET



CANCELLED NUMBERS T.L. 104 T.L. 500

SEE MAP 2N 23

SEE MAP 2N 25

SEE MAP IN 24

Revised 4/27/2004, JD 2N 24