

SECTION

30 Reservoir App

T 35.3 N.

TOWNSHIP \_\_\_\_\_, RANGE \_\_\_\_\_, W. M.

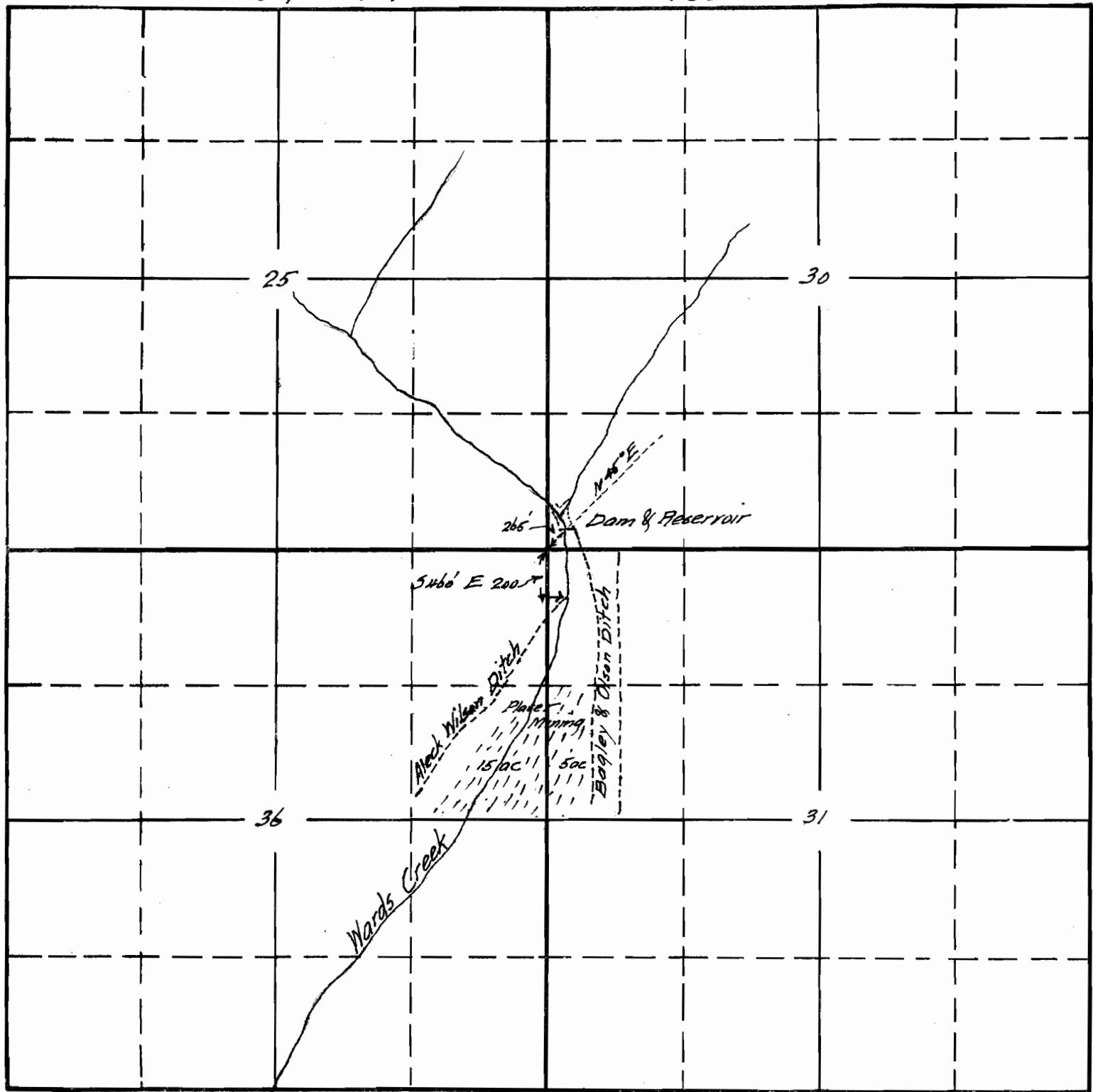
T 35 5 R 3 W W M

North

T 35 5 R 3 W W M

West

East



South

RECEIVED  
R  
JUL 28 1934

STATE ENGINEER  
SALEM, OREGON

APPLICATION No. 15462

PERMIT No. R-675

Recd This office July 28/34