

RECEIVED

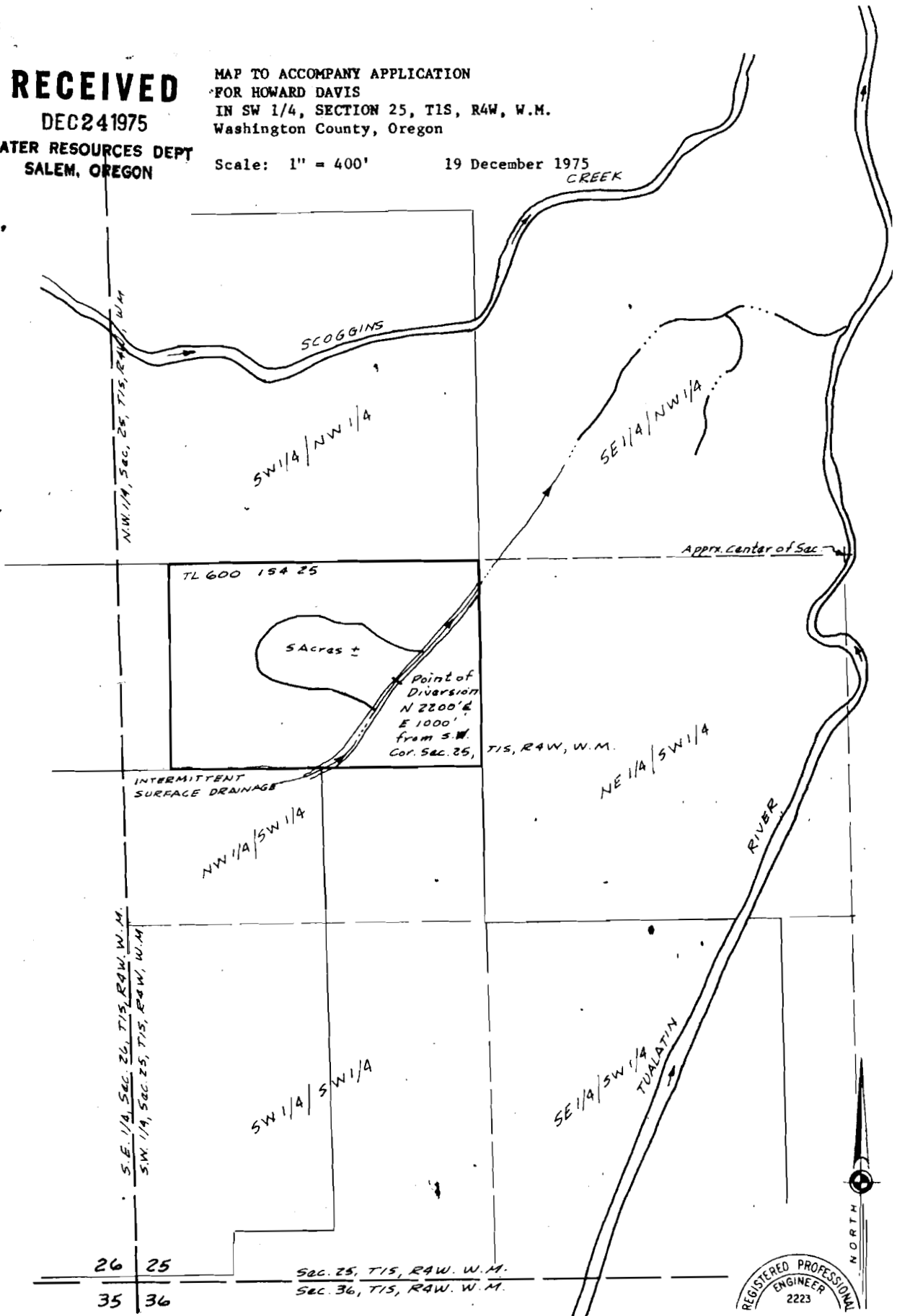
DEC 24 1975

WATER RESOURCES DEPT
SALEM, OREGON

MAP TO ACCOMPANY APPLICATION
FOR HOWARD DAVIS
IN SW 1/4, SECTION 25, T1S, R4W, W.M.
Washington County, Oregon

Scale: 1" = 400'

19 December 1975



Application No. R 53816
Permit No. R 6765

h. a. mohr & ASSOCIATES
CIVIL ENGINEERS

